

7" - 8" - 12"

Multi-Connector

Installation Instructions

Connector Installation for Wedge Korband

1. Check to be sure the Korband is properly located in Connector groove.
2. Inspect the inside surface of the cored hole. If there is porosity or wire-to-concrete separation, use patching or hydraulic cement to smooth the surface.
3. Insert Connector Assembly into hole with Wedge Expander at top of hole.
4. Position Connector so it is square to manhole both vertically and horizontally.
5. Wedge Expander for **7" & 8" holes should be tightened as follows:**
 - Plastic Wedge – **5 ft. lbs.**
 - Stainless Steel Wedge – **8 ft. lbs.**
- 12" holes should be tightened as follows:**
 - Stainless Steel Wedge – **12 ft. lbs.**
 - Ex Plastic Wedge – **12-20 ft. lbs.**

Retorquing is not required prior to shipment.

Connector Installation for Toggle Korband 7" & 8":

1. Insert the Korband Expander Assembly (P/N 90225) under the Korband Toggle and rotate the hex rod by hand to ensure that the Expander is properly engaged. *(The 8" Toggle requires a foot extension (P/N 13808))*
2. Insert the Connector and Expander into the cored or formed opening from inside the manhole.
3. Using a wrench, rotate the hex rod until the Korband Toggle is expanded well past center and is firmly seated against the Connector.

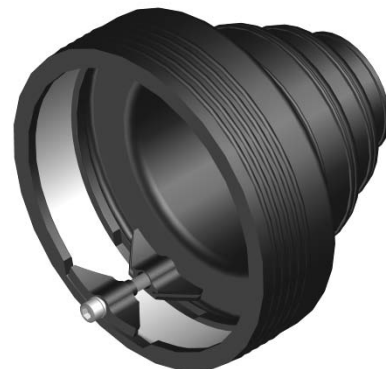
***12" Toggle requires Hydraulic Jack (P/N 91910)**

Pipe Installation

1. Be sure sealing area of pipe is smooth and free of defects. Repair if needed.
2. Center pipe in Connector opening.
(Pipe must not rest on Connector Korband)
3. Position the Pipe Clamp in the Connector's Pipe Clamp groove with the screw at the top.
4. Tighten the Pipe Clamp screw to 60 inch pounds with a T-handle Torque Wrench, P/N 80090.

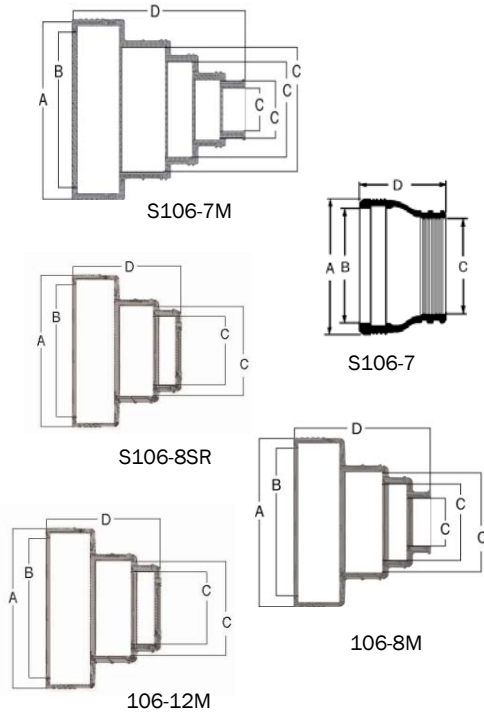
Note: On minimum pipe O.D. installations, lift the rubber up underneath the Pipe Clamp screw so that the Connector contacts the bottom surface of the pipe while the Pipe Clamp screw is being tightened. Application of pipe lubrication on the underside of the clamp will also help ensure that an even contraction of rubber is maintained throughout the clamping area.

Caution: Do not use impact wrench for installation. All pipe stubs must be restrained.



7" - 8" - 12" Multi-Connector

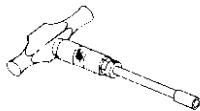
Sizing Chart



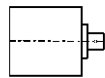
P/N	Pipe O.D. Range	Hole Size Range	Connector Dimensions			Pipe Clamp P/N
		A	B	C	D	
S106-7MWP S106-7MWS S106-7MT	1.5 - 4.8 1.9 - 2.4 3.2 - 3.8 3.8 - 4.8	6.995 - 7.055	6.125	1.6 2.3 3.6 4.8	7.8	I-80
S106-7WP S106-7WS S106-7T	3.5 - 4.8	6.995 - 7.055	6.125	4.5	6	I-80
S106-8SRWP S106-8SRWS S106-8SRT	4.2 - 4.8 6.2 - 6.4	7.995 - 8.055	7.125	4.3 6.4	7.5	I-128
S106-8MWP S106-8MWS S106-8MT	1.5 - 2.4 3.2 - 3.6 3.9 - 4.8	7.995 - 8.055	6.83	2.3 3.6 4.8	6.37	I-80
S106-12MWP S106-12MWS S106-12MT	3.5 - 4.8 6.2 - 6.9	12.04 - 12.20 12.00 - 12.20 12.04 - 12.13	10.125	4.5 6.5	8	I-128

Installation Tools

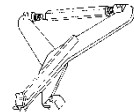
Plastic Wedge Korbant
P/N 91819 T-Handle
Torque Wrench with
3/16" hex head
(Torqued to 5 ft. lbs.)



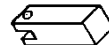
Stainless Steel Wedge Korbant
P/N 91440-8 Torque Limiter
& 1/2" Socket Wrench
(Torqued to 8 ft. lbs.)



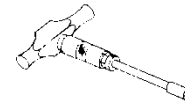
Toggle Korbant
P/N 90225 Expander Assembly



For 8" Toggle Korbant
P/N 13808 - 8" Foot Extension
(use with P/N 90225)



Pipe Clamps
P/N 80090 T-Handle
Torque Wrench



Trelleborg Pipe Seals Milford, Inc.
250 Elm Street, P.O. Box 301, Milford, New Hampshire 03055 U.S.A.
Tel: 800-626-2180 603-673-8680 Fax: 603-673-7271 www.trelleborg.com/npc