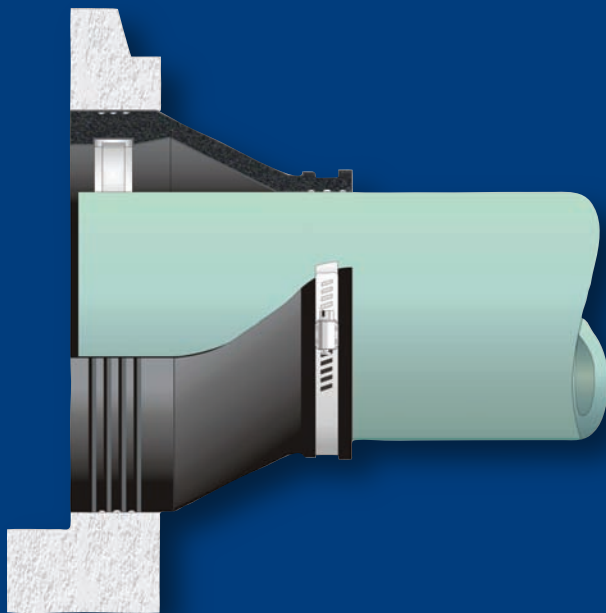


Kor-N-Seal® I

106/406 Series Pipe-to-Manhole Connector



- *Most widely used flexible connector in sanitary sewer applications throughout the world*
- *Easy-to-Install*
- *Meets the specifications of ASTM C923*



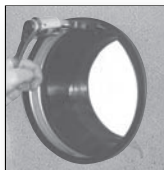
Patented Waveband technology creates a more effective seal by concentrating the compressive force of the expansion band. The rubber is “captured” between the band and the concrete.

Kor-N-Seal I

106/406 Series Pipe-to-Manhole Connector

Wedge Style Connectors EX Series Plastic or Stainless Steel

Installation requires a 1/2" socket wrench & preset torque limiter.



PIPE O.D. RANGE	MODEL NUMBER	NOMINAL HOLE SIZE
1.50 - 4.80	S106-7MW	7"
3.50 - 4.50	S106-7W	7"
4.20 - 6.40	S106-8SRW	8"
1.50 - 4.80	S106-8MW	8"
5.10 - 5.90	S106-8W	8"
6.00 - 6.75	S406-10AW	10"
7.50 - 8.20	S406-10W	10"
6.00 - 6.75	S406-10.5AW	10½"
7.50 - 8.70	S406-10.5W	10½"
6.00 - 7.00	S406-11BW	11"
7.50 - 9.00	S406-11AW	11"
3.50 - 6.90	S106-12M	12"
6.00 - 7.00	S406-12CW	12"
6.25 - 7.50	S406-12BW	12"
7.50 - 9.00	S406-12AW	12"
9.00 - 10.20	S406-12W	12"
5.75 - 7.00	S106-12BW	12"
7.00 - 8.50	S106-12AW	12"
8.25 - 9.75	S106-12W	12"
9.50 - 11.25	S106-14AW	14"
9.50 - 11.25	S106-16BW	16"
11.25 - 13.00	S106-16AW	16"
13.00 - 14.20	S106-16W	16"
14.00 - 15.50	S106-20BWS	20"
15.50 - 17.00	S106-20AWS	20"
17.00 - 18.15	S106-20WS	20"

Refer to Recommended Installation Instructions.

Toggle Style Connectors (Jack-In Style)

Installation requires a hydraulic jack assembly



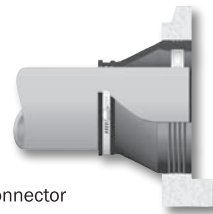
PIPE O.D. RANGE	MODEL NUMBER	NOMINAL HOLE SIZE
1.50 - 4.80	S106-7MT	7"
3.50 - 4.50	S106-7T	7"
4.20 - 6.40	S106-8SRT	8"
1.50 - 4.80	S106-8MT	8"
5.10 - 5.90	S106-8T	8"
6.00 - 6.75	S406-10AT	10"
7.50 - 8.40	S406-10T	10"
6.00 - 6.75	S406-10.5AT	10½"
7.50 - 8.90	S406-10.5T	10½"
6.00 - 7.00	S406-11BT	11"
7.50 - 9.00	S406-11AT	11"
3.50 - 6.90	S106-12MT	12"
6.00 - 7.00	S406-12CT	12"
6.25 - 7.50	S406-12BT	12"
7.50 - 9.00	S406-12AT	12"
9.00 - 10.50	S406-12T	12"
5.75 - 7.00	S106-12BT	12"
7.00 - 8.50	S106-12AT	12"
8.25 - 9.75	S106-12T	12"
9.50 - 11.25	S106-14AT	14"
9.50 - 11.25	S106-16BT	16"
11.25 - 13.00	S106-16AT	16"
13.00 - 14.50	S106-16T	16"

Refer to Recommended Installation Instructions.

To Install 7" & 8" Toggle Style Connectors:
 Expander Assembly (p/n 90225)
 8" Extension (p/n 13808)

Ordering Information

Kor-N-Seal I:
 106/406 Series
 Pipe-to-Manhole Connector



The 106 Series connector is 8 inches long, the 406 Series connector is 6 inches long. The number following the hyphen in our model numbers is the required hole size. The S106-20 Series is available in Stainless Steel Wedge only.

Recommended Torque Values:

Connectors with 8" hole size and smaller:

Steel Wedge - 1/2" Socket Wrench - 8 ft. lbs.

Connectors with 10 - 20" hole sizes:

EX Series - 1/2" Socket Wrench - 12 - 20 ft. lbs.

Steel Wedge - 1/2" Socket Wrench - 12 ft. lbs.

Preset torque limiters are available.

Contact Customer Service at 1-800-626-2180 for more information.

For larger pipe sizes refer to Kor-N-Seal II Series Connectors

206 Series - For pipe sizes 15" - 51" in diameter.

306 Series - To fit larger pipe into smaller diameter manholes.

506 Series - Designed specifically for stormwater applications.

Using Corrugated Pipe

Adapters are required when using Corrugated Pipe. Refer to the Corrugated Pipe Adapter Data Sheet for details.

Covered under U.S. Patent No. 5,738,359



Trelleborg Pipe Seals Milford, Inc.
 P.O. Box 301, 250 Elm Street, Milford, New Hampshire 03055 U.S.A.
 Tel: 800-626-2180 603-673-8680 Fax: 603-673-7271 www.trelleborg.com/npc

Kor-N-Seal® II

206 Series Pipe-to-Manhole Connector

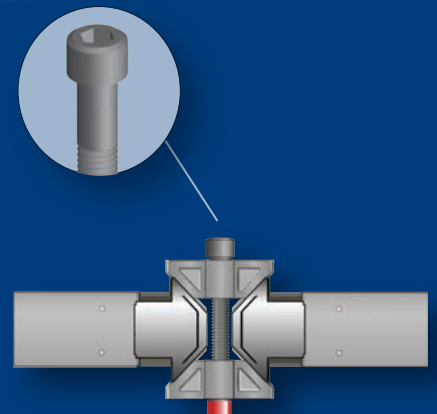


CORRUGATED RUBBER DESIGN

- *Corrugated profile for easier installation and positioning of the pipe in trench*
- *Designed for larger pipe sizes 18" - 51"*
- *Meets the specifications of ASTM C923*

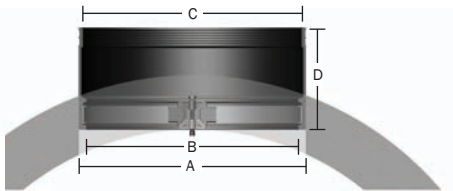


The 206 Series Connector is designed with an Allen Head Wedge Bolt for easier installation of the connector into the manhole.



Kor-N-Seal II

206 Series Pipe-to-Manhole Connector



- To fit larger sized pipe into smaller diameter manholes, please refer to our Kor-N-Seal II 306 Series Connectors.

- Using Corrugated Pipe: Adapters are required when using Corrugated Pipe. Refer to the Corrugated Pipe Adapter Data Sheet for details.

P/N	Suggested Pipe O.D. Range	Hole Size Range				Connector Dimension				Pipe Clamps		Minimum Manhole Size Required
		A	B	C	D	Qty	P/N					
S206-18L	15.000 — 15.625	17.98	18.13	15.875	16	10.50	2	I-282	48/4			
S206-20 S206-20L	15.625 — 17.000 17.000 — 17.625	19.98	20.13	17.875	17 18	10.50	2 2	I-282 I-306				
S206-22 S206-22L	17.625 — 19.000 19.000 — 19.625	21.98	22.13	19.875	19 20	10.50	2 2	I-318 I-348	48/4			
* S206-24A	18.000 — 19.500	23.98	24.13	21.875	18.75	10.00	4	I-180				
S206-24 S206-24L	19.625 — 21.000 21.000 — 21.625	23.98	24.13	21.875	21 22	10.50	4 4	I-180	48/5			
S206-26 S206-26L	21.625 — 23.000 23.000 — 23.625	26.00	26.20	23.875	23 24	10.50	4 4	I-190 I-218				
S206-28 S206-28L	23.625 — 25.000 25.000 — 25.625	28.00	28.20	25.875	25 26	10.50	4 4	I-218	48/5			
S206-30 S206-30L	25.625 — 27.000 27.000 — 27.625	30.00	30.20	27.875	27 28	10.50	4 4	I-218 I-242				
S206-32 S206-32L	27.625 — 29.000 29.000 — 29.625	32.00	32.20	29.875	29 30	10.50	4 4	I-242	60/6			
S206-34 S206-34L	29.625 — 31.000 31.000 — 31.625	34.00	34.20	31.875	31 32	10.50	4 4	I-258				
S206-36 S206-36L	31.625 — 33.000 33.000 — 33.625	36.00	36.20	33.875	33 34	10.50	4 4	I-282	60/7			
S206-38 S206-38L	33.625 — 35.000 35.000 — 35.625	38.00	38.20	35.875	35 36	10.50	4 4	I-282 I-306				
S206-40 S206-40L	35.625 — 37.000 37.000 — 37.625	40.00	40.20	37.875	37 38	10.50	4 4	I-306	60/8			
S206-42 S206-42L	37.625 — 39.000 39.000 — 39.625	42.00	42.20	39.875	39 40	10.50	4 4	I-318 I-348				
S206-44 S206-44L	39.625 — 41.000 41.000 — 41.625	44.00	44.20	41.875	41 42	10.50	4 4	I-348	72/8			
S206-46 S206-46L	41.625 — 43.000 43.000 — 43.625	46.00	46.20	43.875	43 44	10.50	4 4	I-348 I-242				
S206-48 S206-48L	43.625 — 45.000 45.000 — 45.625	48.00	48.20	45.875	45 46	10.50	6 6	I-242 I-258	84/8			
S206-50 S206-50L	45.000 — 45.625 45.625 — 47.000	50.00	50.25	47.250	46 47	10.50	6 6	80667				
S206-52 S206-52L	47.000 — 47.625 47.625 — 49.000	52.00	52.25	49.250	48 49	10.50	6 6	80667	84/9			
S206-54 S206-54L	49.000 — 49.625 49.625 — 51.000	54.00	54.25	51.250	50 51	10.50	6 6	80667				

Larger sizes quoted upon request.



Trelleborg Pipe Seals Milford, Inc.
P.O. Box 301, 250 Elm Street, Milford, New Hampshire 03055 U.S.A.
Tel: 800-626-2180 603-673-8680 Fax: 603-673-7271 www.trelleborg.com/npc

Kor-N-Seal[®] II

306 Series Pipe-to-Manhole Connector



- *Allows you to fit large diameter pipe into the smallest possible manhole structures*
- *Can be used in cored or formed holes*
- *Meets the specifications of ASTM C923*
- *Easy-to-install*



The Patented 4" wide Stainless Steel Korbond is able to overcome the curvature of smaller sized manholes and provide a watertight seal.

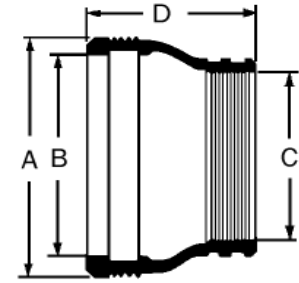


Kor-N-Seal® II 306 Series Connector



TRELLEBORG

P/N	Suggested Pipe O.D. Range	Hole Size Range				Pipe Clamp		Minimum Manhole Size
		A	B	C	D	Qty	P/N	
S306-22	17.625 - 18.500	21.98 - 22.13	19.875	19	10.5	2	I-318	36/4
S306-22L	18.500 - 19.625			20		2	I-348	
S306-24	19.625 - 20.500	23.98 - 24.13	21.875	21	10.5	4	I-180	36/4
S306-24L	20.500 - 21.625			22		4		
S306-26	21.625 - 22.500	26.00 - 26.20	23.875	23	10.5	4	I-190	36/4
S306-26L	22.500 - 23.625			24		4	I-218	
S306-28	23.625 - 24.500	28.00 - 28.20	25.875	25	10.5	4	I-218	48/5
S306-28L	24.500 - 25.625			26		4		
S306-30	25.625 - 26.500	30.00 - 30.20	27.875	27	10.5	4	I-218	48/5
S306-30L	26.500 - 27.625			28		4	I-242	
S306-30L-32	26.500 - 27.625	32.00 - 32.20	29.875	28	10.5	4	I-242	48/5
S306-32	27.625 - 28.500	32.00 - 32.20	29.875	29	10.5	4	I-242	48/5
S306-32L	28.500 - 29.625			30		4		
S306-34	29.625 - 30.500	34.00 - 34.20	31.875	31	10.5	4	I-258	48/5
S306-34L	30.500 - 31.625			32		4		
S306-36	31.625 - 32.500	36.00 - 36.20	33.250	33	10.5	4	80667 Power Gear	60/6
S306-36L	32.500 - 33.000			34		4		
S306-36-STORM	31.625 - 32.500	36.00 - 36.20	33.875	33	10.5	4	I-282	60/6
S306-36L-STORM	32.500 - 33.625			34		4		
S306-38	33.625 - 34.500	38.00 - 38.20	35.250	35	10.5	4	80667 Power Gear	60/6
S306-38L	34.500 - 35.000			36		4		
S306-38LS-PG	34.500 - 35.625	38.00 - 38.20	35.875	36	10.5	4	80667 Power Gear	60/6
S306-38-STORM	33.625 - 34.500	38.00 - 38.20	35.875	35	10.5	4	I-282	60/6
S306-38L-STORM	34.500 - 35.625			36		4	I-306	
S306-40	35.625 - 36.500	40.00 - 40.20	37.250	37	10.5	4	80667 Power Gear	60/6
S306-40L	36.500 - 37.000			38		4		
S306-40-STORM	35.625 - 36.500	40.00 - 40.20	37.875	37	10.5	4	I-306	60/6
S306-40L-STORM	36.500 - 37.625			38		4		
S306-42	37.625 - 38.500	42.00 - 42.20	39.250	39	10.5	6	80682 Power Gear	72/7
S306-42L	38.500 - 39.000			40		6		
S306-42-STORM	37.625 - 38.500	42.00 - 42.20	39.875	39	10.5	4	I-318	72/7
S306-42L-STORM	38.500 - 39.625			40		4	I-348	
S306-44	39.625 - 40.500	44.00 - 44.20	41.250	41	10.5	8	80682 Power Gear	72/7
S306-44L	40.500 - 41.000			42		8		
S306-44LS-PG	40.500 - 41.625	44.00 - 44.20	41.875	42	10.5	8	80682 Power Gear	72/7
S306-44-STORM	39.625 - 40.500	44.00 - 44.20	41.875	41	10.5	4	I-348	72/7
S306-44L-STORM	40.500 - 41.625			42		4		
S306-46	41.625 - 42.500	46.00 - 46.20	43.250	43	10.5	6	80667 Power Gear	72/7
S306-46L	42.500 - 43.000			44		6		
S306-46-STORM	41.625 - 42.500	46.00 - 46.20	43.875	43	10.5	4	I-348	72/7
S306-46L-STORM	42.500 - 43.625			44		4		
S306-48	43.625 - 44.500	48.00 - 48.20	45.250	45	10.5	6	80667 Power Gear	72/7
S306-48L	44.500 - 45.000			46		6		
S306-48-STORM	43.625 - 44.500	48.00 - 48.20	45.875	45	10.5	6	I-242	72/7
S306-48L-STORM	44.500 - 45.625			46		6	I-258	



*Adapters are required when using corrugated pipe. Refer to the Corrugated Pipe Adapter Data Sheet for details.

Covered under U.S. Patent No. 6,641,176



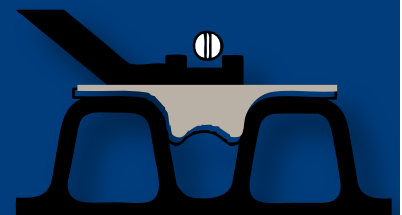
Trelleborg Pipe Seals Milford, Inc.
 250 Elm Street, P.O. Box 301, Milford, New Hampshire 03055 U.S.A.
 Tel: 800-626-2180 603-673-8680 Fax: 603-673-7271 www.trelleborg.com/npc

NPC - Corrugated Pipe Adapter



- *Provides a good sealing surface on corrugated HDPE pipe*
- *Easy to install - Simply stretch it over the pipe to the desired location*
- *Certified to ASTM C923 when used with a Kor-N-Seal® Connector*
- *Specifically designed for use with most sizes of ADS, Hancor, Lane, N-Flow, Quality Culvert, JM Eagle and Contech A2000*

The unique design of our Pipe Adapter distributes the force from the pipe clamp on our Kor-N-Seal connector directly against the inside walls of the pipe corrugations, creating a watertight seal up to 24 inches.*



NPC - Corrugated Pipe Adapter

Pipe Size	Pipe Mfg.	Pipe O.D. Ref. $\pm \frac{1}{4}$	Adapter Part No.	Kor-N-Seal Connector	Sealing Capability
8	ADS	9 1/8	CGA-8A	S106-12 or S406-12	WT
10	ADS	11 3/8	CGA-10A	S106-16A	WT
12	ADS	14 3/8	CGA-12A	S106-16T or S106-20BWS	WT
15	ADS	17 1/2	CGA-15A	S106-20WS	WT
18	ADS	21 3/16	CGA-18A	S206-24L, S306-24L	WT
24	ADS	27 3/4	CGA-24A	S206-30L-32, S306-30L-32	WT
30	ADS	35	CGA-30A	S206-38L or S306-38L	ST
36	ADS	41 7/8	CGA-36A	S206-44L-46, S306-44L-46	ST
42	ADS	47 11/16	CGA-42A	S206-52L	ST
48	ADS	53 7/16	CGA-48A	S206-58L	ST
60	ADS	66 1/4	CGA-60A	S206-70L	ST

WT = Watertight

ST = Soiltight



TRELLEBORG

Trelleborg Pipe Seals Milford, Inc.

P.O. Box 301, 250 Elm Street, Milford, New Hampshire 03055 U.S.A.

Tel: 800-626-2180 603-673-8680 Fax: 603-673-7271 www.trelleborg.com/npc

7" - 8" - 12"

Multi-Connector

Installation Instructions



Connector Installation for Wedge Korband

1. Check to be sure the Korband is properly located in Connector groove.
2. Inspect the inside surface of the cored hole. If there is porosity or wire-to-concrete separation, use patching or hydraulic cement to smooth the surface.
3. Insert Connector Assembly into hole with Wedge Expander at top of hole.
4. Position Connector so it is square to manhole both vertically and horizontally.
5. Wedge Expander for **7" & 8" holes should be tightened as follows:**
 Stainless Steel Wedge – **8 ft. lbs.**
12" holes should be tightened as follows:
 Stainless Steel Wedge – **12 ft. lbs.**
 Ex Plastic Wedge – **12-20 ft. lbs.**

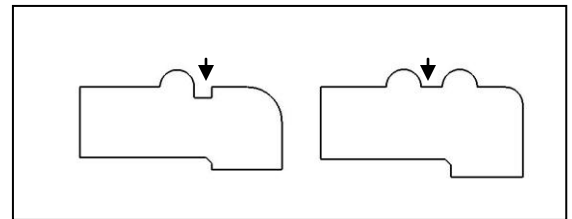
Retorquing is not required prior to shipment.

Connector Installation for Toggle Korband 7" & 8":

1. Insert the Korband Expander Assembly (P/N 90225) under the Korband Toggle and rotate the hex rod by hand to ensure that the Expander is properly engaged. *(The 8" Toggle requires a foot extension (P/N 13808))*
2. Insert the Connector and Expander into the cored or formed opening from inside the manhole.
3. Using a wrench, rotate the hex rod until the Korband Toggle is expanded well past center and is firmly seated against the Connector.

Pipe Installation

1. To size the connector for the desired pipe O.D. Using a knife, carefully remove the un-needed section of the connector by cutting within the appropriate groove.



2. Be sure sealing area of pipe is smooth and free of defects. Repair if needed.
3. Center pipe in Connector opening.
(Pipe must not rest on Connector Korband)
4. Position the Pipe Clamp in the Connector's Pipe Clamp groove with the screw at the top.
5. Tighten the Pipe Clamp screw to 60 inch pounds with a T-handle Torque Wrench, P/N 80090.

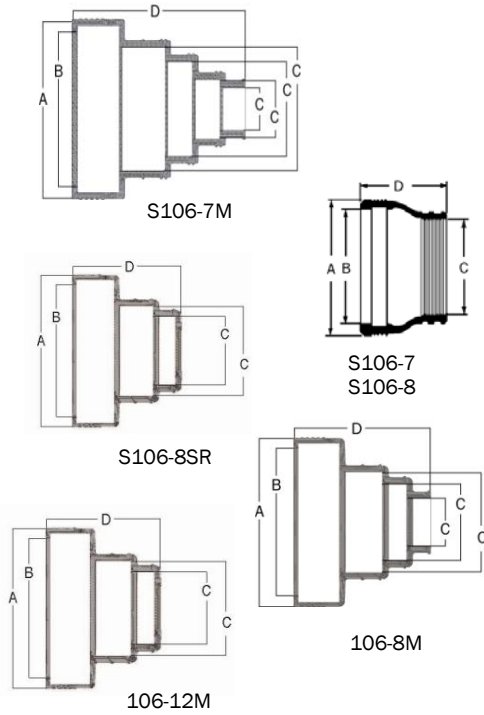
Note: On minimum pipe O.D. installations, lift the rubber up underneath the Pipe Clamp screw so that the Connector contacts the bottom surface of the pipe while the Pipe Clamp screw is being tightened. Application of pipe lubrication on the underside of the clamp will also help ensure that an even contraction of rubber is maintained throughout the clamping area.

Caution: Do not use impact wrench for installation.
All pipe stubs must be restrained.

*** 12" Toggle requires Hydraulic Jack (P/N 91910)**

7" - 8" - 12" Multi-Connector

Sizing Chart

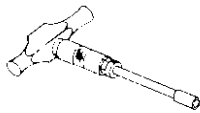


P/N	Pipe O.D. Range	Hole Size Range	Connector Dimensions				Pipe Clamp P/N
			A	B	C	D	
S106-7MWS S106-7MT	1.5 - 1.8 1.9 - 2.4 3.2 - 3.8 3.8 - 4.8	6.995 - 7.055	6.125	1.6 2.3 3.6 4.8	7.8	I-80	
S106-7WS S106-7T	3.5 - 4.5	6.995 - 7.055	6.125	4.5	6	I-80	
S106-8WS S106-8T	5.1 - 5.9	7.995 - 8.055	7.125	5.5	8	I-128	
S106-8SRWS S106-8SRT	4.2 - 4.8 6.2 - 6.4	7.995 - 8.055	7.125	4.3 6.4	7.5	I-128	
S106-8MWS S106-8MT	1.5 - 2.4 3.2 - 3.6 3.9 - 4.8	7.995 - 8.055	6.83	2.3 3.6 4.8	6.37	I-80	
S106-12MWP S106-12MWS S106-12MT	3.5 - 4.8 6.2 - 6.9	12.04 - 12.20 12.00 - 12.20 12.04 - 12.13	10.125	4.5 6.5	8	I-128	

Installation Tools

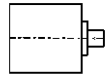
Plastic Wedge Korband

P/N 91819 T-Handle
Torque Wrench with
3/16" hex head
(Torqued to 5 ft. lbs.)



Stainless Steel Wedge Korband

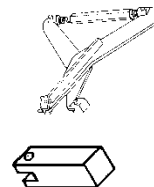
P/N 91440-8 Torque Limiter
& 1/2" Socket Wrench
(Torqued to 8 ft. lbs.)



Toggle Korband

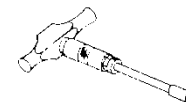
P/N 90225 Expander Assembly

For 8" Toggle Korband
P/N 13808 - 8" Foot Extension
(use with P/N 90225)



Pipe Clamps

P/N 80090 T-Handle
Torque Wrench



Trelleborg Pipe Seals Milford, Inc.
250 Elm Street, P.O. Box 301, Milford, New Hampshire 03055 U.S.A.
Tel: 800-626-2180 603-673-8680 Fax: 603-673-7271 www.trelleborg.com/npc