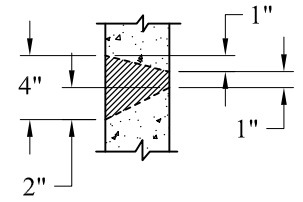
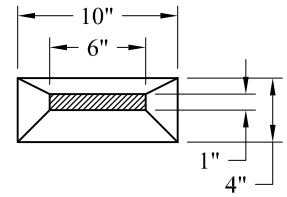
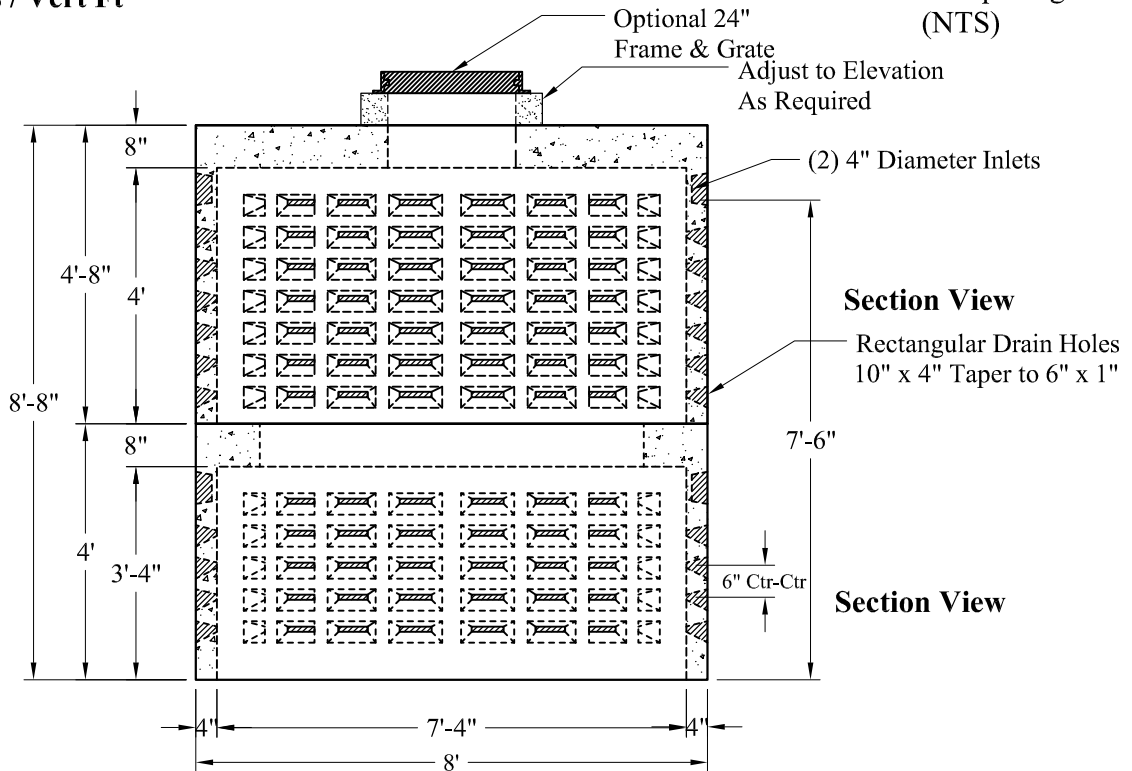


Top View



Detail of Openings (NTS)

Volume:
316 Gals / Vert Ft



Section View

Section View

Est Weights:

Top:	7,900 Lbs
Bottom:	4,850 Lbs
Total:	12,750 Lbs

General Notes

- 1.) Steel Reinforcement Conforms To Latest ASTM Specifications:
ASTM A-615 Grade 60 Rebar
ASTM A-185 Welded Wire Fabric
- 2.) Concrete: $f_c = 4,000$ psi @ 28 Days Minimum
- 3.) Design Loading: AASHTO-HS20-44
- 4.) Optional Cast Iron Covers or Concrete Covers Available
- 5.) Hole Coring Available for Larger Diameter Pipes
- 6.) All Sections Are Butt Joint

Phoenix
Precast
Products

8' O.D. 2,500 Gallon
Dry Well

P/N: