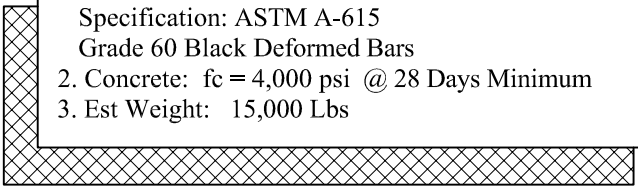


General Notes

1. Steel Reinforcement Conforms to Latest ASTM Specification: ASTM A-615 Grade 60 Black Deformed Bars
2. Concrete: $f_c = 4,000$ psi @ 28 Days Minimum
3. Est Weight: 15,000 Lbs



Phoenix Precast Products	N.H. DOT 30" Pipe Headwall
--------------------------------	-------------------------------

P/N: HWSDOT-30