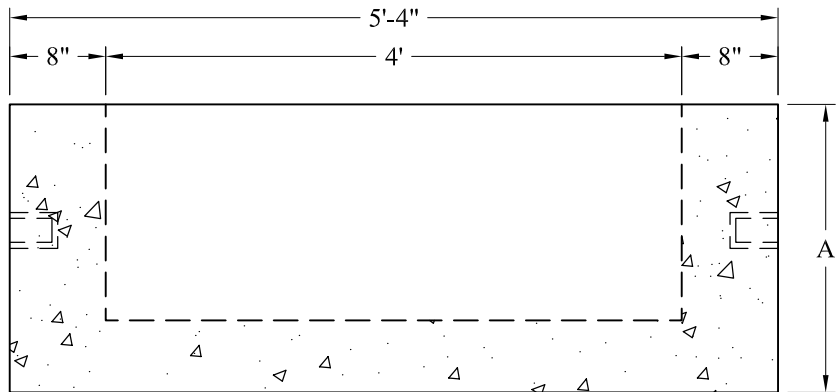


P/N	Dim "A"	Est Weight
BB4-1.5S	18"	3,080 Lbs
BB4-2S	24"	3,800 Lbs
BB4-3S	36"	5,240 Lbs



General Notes

- 1.) Concrete Compressive Strength: 4,000 PSI @ 28 Days
Type III Cement
- 2.) Reinforcement Steel ASTM A-615 Grade 60
Black Deformed Bars
- 3.) Design Loading: AASHTO-HS20-44

Phoenix
Precast
Products

Barrel Block
Sump