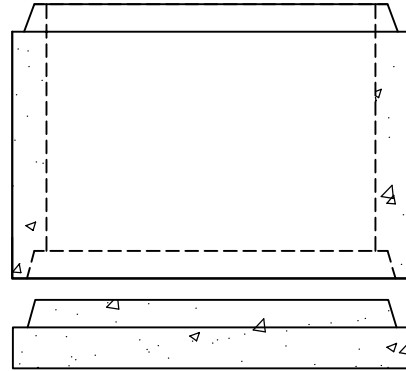
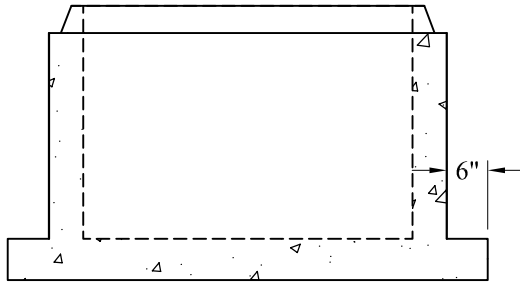


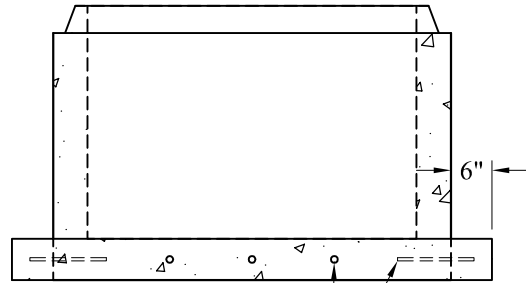
Standard
One-Pour Monolithic



Separate
Tongue & Groove Base



Extended
One-Pour Monolithic



Drill & Dowel Before
Extension is Poured

Modified Extended

General Notes

1. Concrete: $f_c = 4,000$ psi @ 28 Days Minimum, Type III Cement
2. HS-20 Design Loading Conforms to Latest Specifications
ASTM C478, AASHTO M199 Precast Reinforced Concrete
Manhole Sections
3. One Pour Monolithic Base Section (Unless Otherwise Noted)
4. Steel Reinforcement Conforms to Latest ASTM Specification:
ASTM A-615, Grade 60 Black Deformed Bars
ASTM A-185 Welded Wire Fabric
5. Sections Available in Increments of 6"
6. Plastic Manhole Steps (If Required) are Steel Reinforced
Conforming to ASTM C-478

Phoenix
Precast
Products

Typical Sumps &
Bases