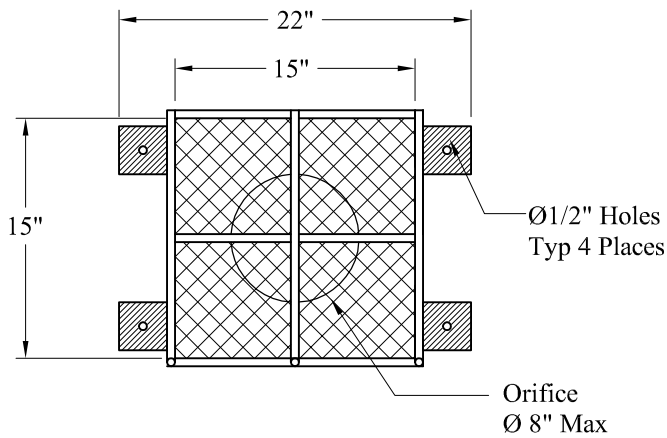
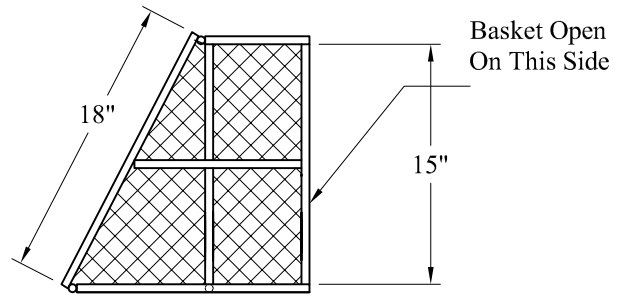


Top View



Front View



Side View

**General Notes**

1. Materials:
  - 3" x 3" x 1/4" Flat Steel Bar
  - 1/2" Dia HR Round Steel Bars
  - 3/4 - #9 Flattened Expanded Metal Sheet
2. Finish: Hot Dip Galvanized
3. Fastening Method: Bolted With 3/8" Dia Stainless Steel Concrete Anchors
4. Est Weight: 20 Lbs

Phoenix  
Precast  
Products

Flat Wall Trash Rack  
Angled Expanded Metal  
15" x 15"

P/N: