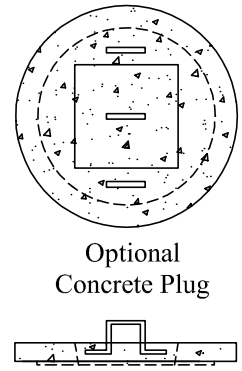
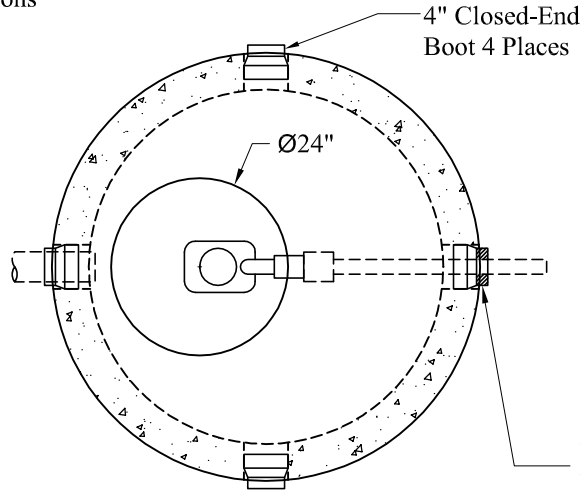
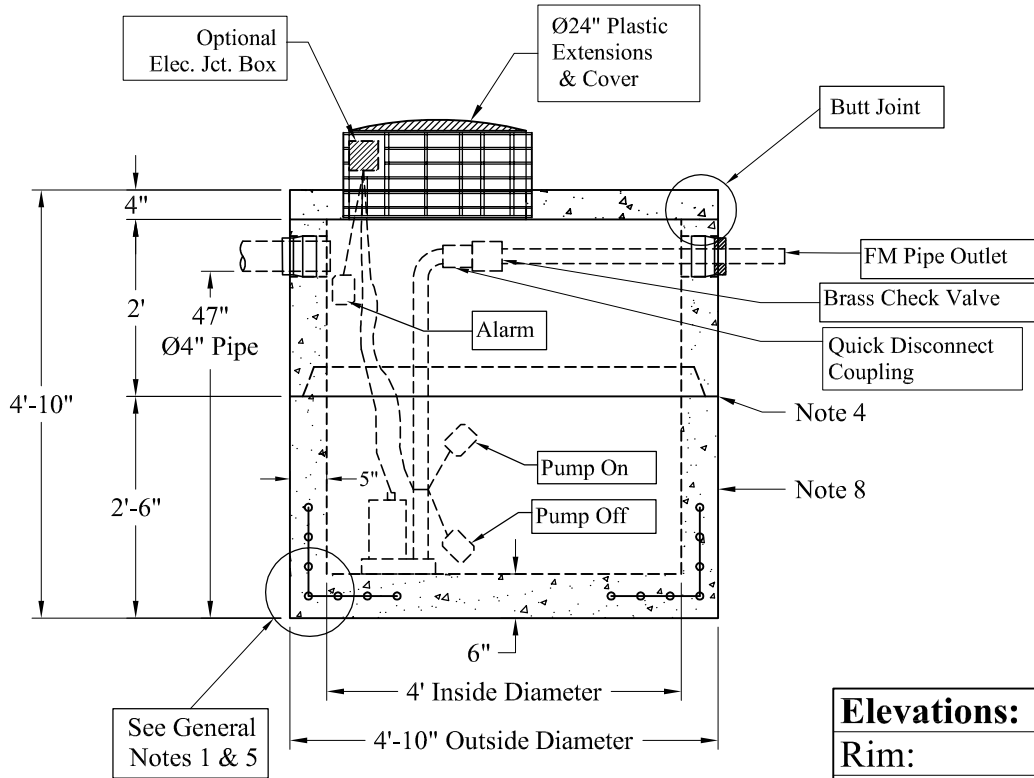


Pumps and Related Accessories are Optional.  
 Junction Box and Electrical Connections  
 Installed by Others



NOTE: A Pipe Bushing  
 Will be Required on all  
 Boots with Pipes Less Than 4"



See General  
 Notes 1 & 5

Elevations:	
Rim:	
Invert In:	
Alarm On:	
Pump On:	
Pump Off:	
Inside Floor:	

**Est. Weight:**

Top Slab:	850 Lbs
2' Riser:	1,760 Lbs
2'-6" Base:	3,250 Lbs
<b>Total:</b>	<b>5,860 Lbs</b>

**General Notes**

- 1.) Reinforcement Steel Conforms To Latest ASTM A 185 Specifications: 0.12 Sq. In. / Lineal Ft. And 0.12 Sq./In. (Both Ways) Base Bottom
- 2.) Concrete:  $f_c = 4,000$  psi @ 28 Days Minimum
- 3.) Manhole Design:  
 Conforms To The Latest ASTM C478 Specifications For "Precast Reinforced Concrete Manhole Sections".
- 4.) Butyl Rubber Joint Sealant Provided
- 5.) One Pour Monolithic Base Section
- 6.) Liquid Capacity: 94 Gallons/VF (8 Gallons/Inch)
- 7.) Flexible Boots Provided
- 8.) Exterior Coating Available

Phoenix Precast Products	4' Diameter LD 300 Gallon Pump Chamber
	P/N: