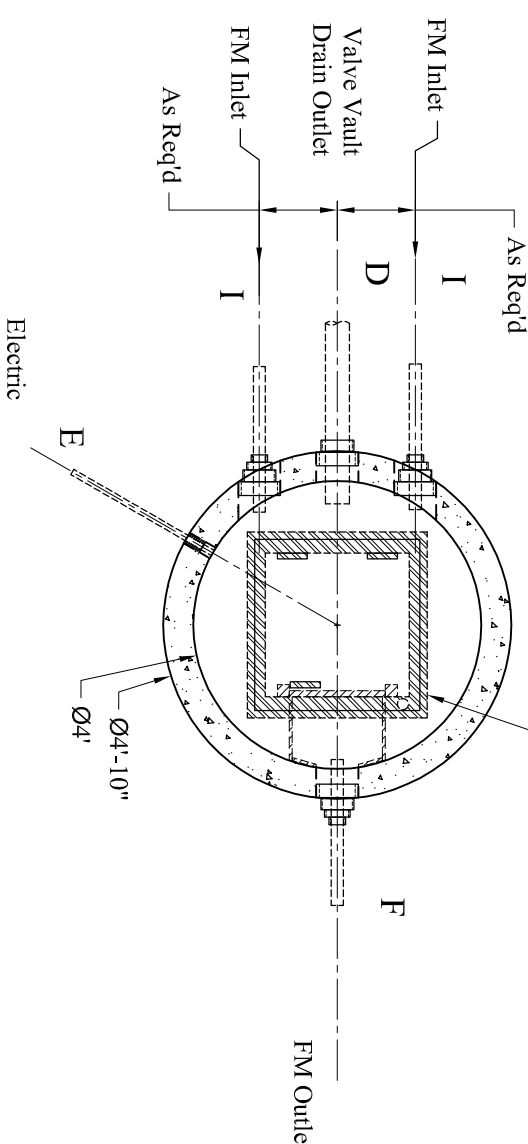
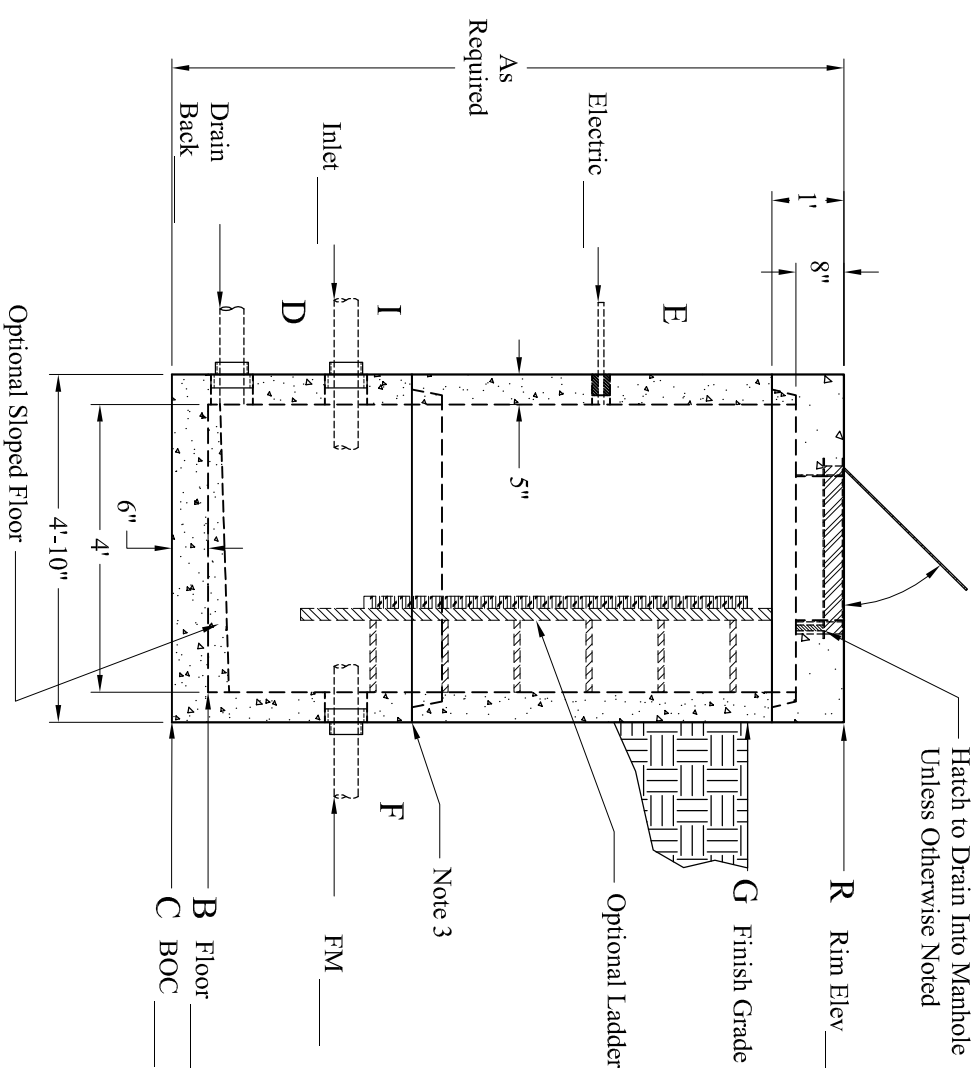


Pipe Chart		
Pipe	Pipe OD	Connection
E		
I		
F		
D		
B		

Elevation Chart	
Description	Elevation
R	Rim
G	Finish Grade
E	Electric Connection(s)
I	Inlet
F	Force Main Outlet
D	Drain Back To Wet Well
B	Inside Bottom Floor
C	Outside Bottom of Concrete



- Options:
- Link Seal Pipe Connections
 - Link Seal Electrical Connections
 - Exterior Damp Proofing/Water Proofing
 - Interior Coatings
 - Interior Fill (Sloped Floor)
 - Exterior Joint Wrap
 - Aluminum Ladder
 - "Ladder-Up" Safety Post
 - Safety Net, Safety Gate
 - Anti-Floataion Collar
- Est Weights:
- Top Slab: 1,970 Lbs
 - Risers: 865 Lbs/VF
 - Sloped Floor: 560 Lbs
 - Ext Base Slab: 1,360 Lbs
- 1.) Steel Reinforcement Conforms To Latest ASTM Specifications: ASTM A-615 Grade 60 Black Deformed Bars
 - 2.) Concrete: $f_c = 5,000$ PSI @ 28 Days Minimum, Type III Cement
 - 3.) Butyl Rubber Joint Sealant Conforms to ASTM C-990 and Federal Spec SS-S-210A.
 - 4.) Flexible Connection Provided For All Pipe Connections.
 - 5.) All Valves, Mounting Hardware, and Related Ancillary Equipment Provided by Others.
 - 6.) HS-20 Design Loading Conforms to Latest Specifications ASTM C478, AASHTO M1199 Precast Reinforced Concrete Manhole Sections
 - 7.) Hatch to Drain Into Structure Unless Otherwise Noted
 - 8.) Contact Phoenix for Hatch Requirements Exceeding these Dimensions

Phoenix Precast Products

Customer:	Job No.	Date	Drawn By:
Location:	Custom No.	Rev:	App'd:

<p>Phoenix Precast Products</p>	<p>4' Diameter Valve Vault</p>
--	---