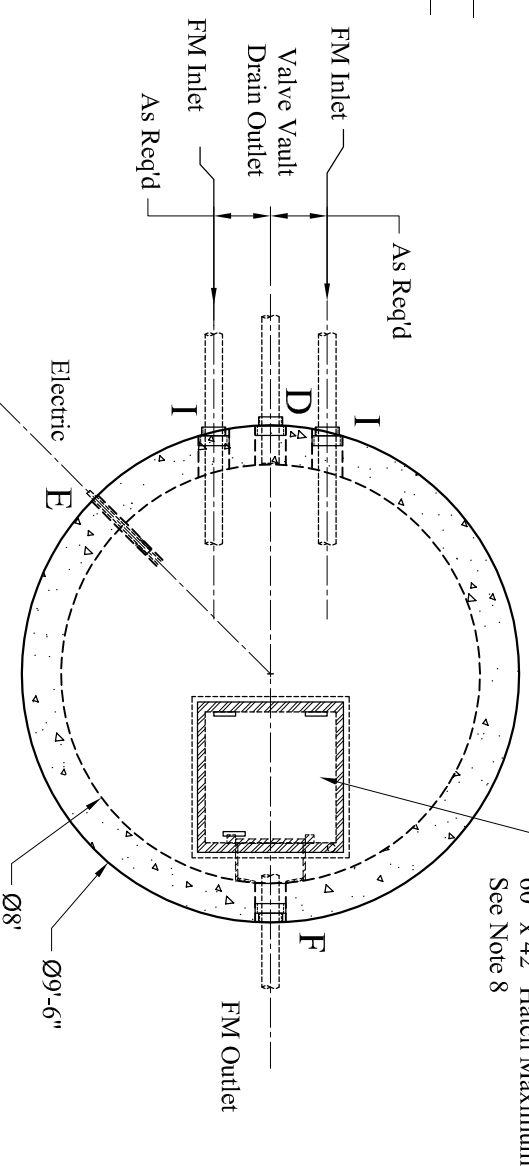
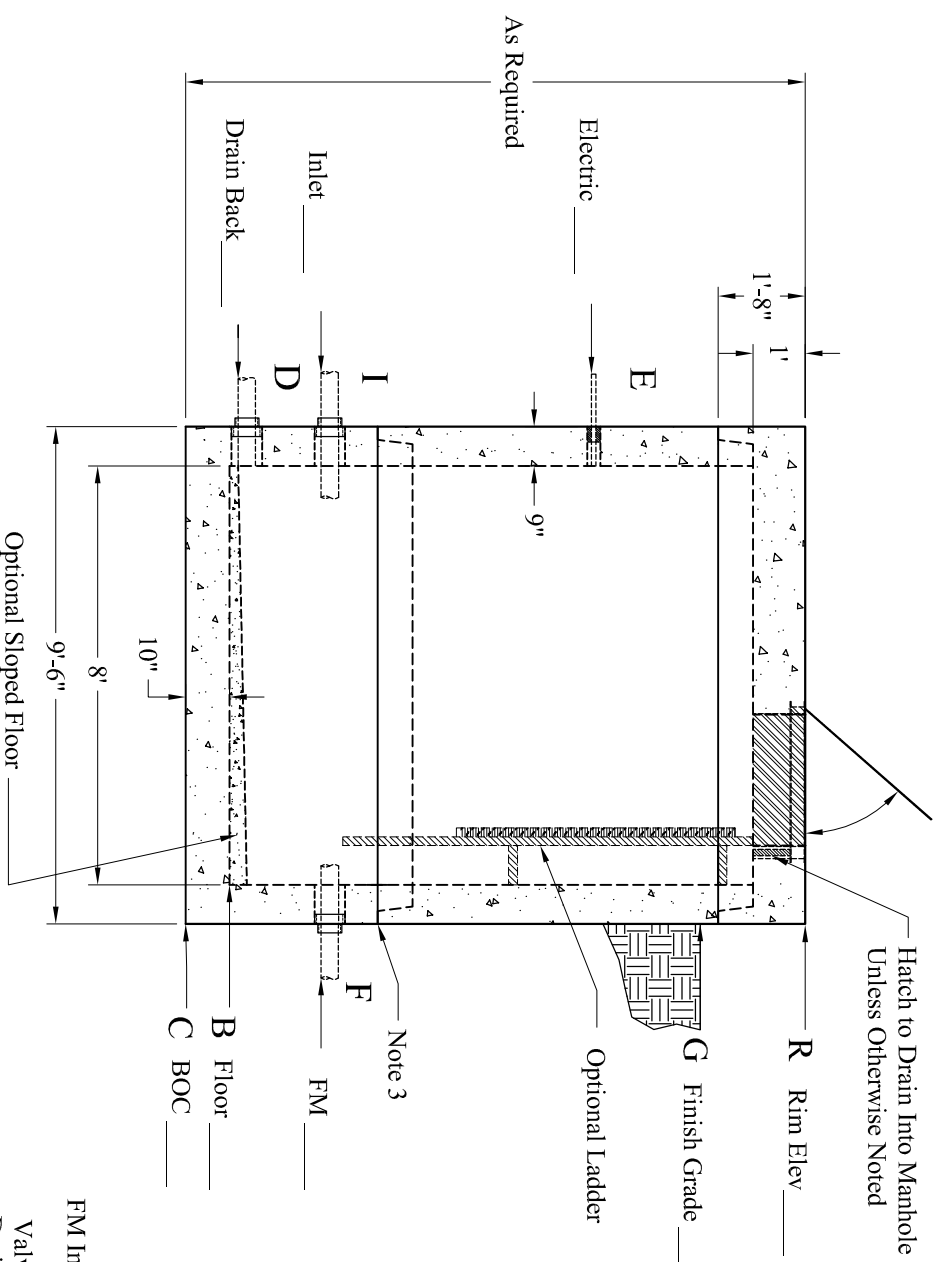


Pipe Chart		
Pipe	Pipe OD	Connection
E		
I		
F		
D		
B		

Elevation Chart		Elevation
	Description	
R	Rim	
G	Finish Grade	
E	Electric Connection(s)	
I	Inlet	
F	Force Main Outlet	
D	Drain Back To Wet Well	
B	Inside Bottom Floor	
C	Outside Bottom of Concrete	

Phoenix Precast Products



- 1.) Steel Reinforcement Conforms To Latest ASTM Specifications:
 ASTM A-615 Grade 60 Black Deformed Bars
 ASTM A-185 Welded Wire Fabric
- 2.) Concrete: $f_c = 5,000$ PSI @ 28 Days Minimum, Type III Cement
- 3.) Butyl Rubber Joint Sealant Conforms to ASTM C-990 and Federal Spec SS-S-210A
- 4.) Flexible Connection Provided For All Pipe Connections.
- 5.) All Valves, Mounting Hardware, and Related Ancillary Equipment Provided by Others.
- 6.) HS-20 Design Loading Conforms to Latest Specifications ASTM C478, AASHTO M199 Precast Reinforced Concrete Manhole Sections
- 7.) Hatch to Drain Into Structure Unless Otherwise Noted
- 8.) Contact Phoenix for Hatch Requirements Exceeding these Dimensions

Options:	Est Weights:
- LinkSeal Pipe Connections	- Top Slab: 11,800 Lbs
- LinkSeal Electrical Connections	- Risers: 3,040 Lbs/VF
- Exterior Damp Proofing/Water Proofing	- Sloped Floor: 1,900 Lbs
- Interior Coatings	- Base Slab: 6,170 Lbs
- Interior Fill (Sloped Floor)	
- Exterior Joint Wrap	
- Aluminum Ladder	
- "Ladder-Up" Safety Post	
- Safety Net, Safety Grate	
- Anti-Floatation Collar	

Customer: _____

Location: _____

Job No. _____

Custom No. _____

Date: 02/14/13

Rev: 3

Drawn By: EWS

App'd: _____

Phoenix
Precast
Products

8' Diameter
Valve Vault

Phoenix Precast Products