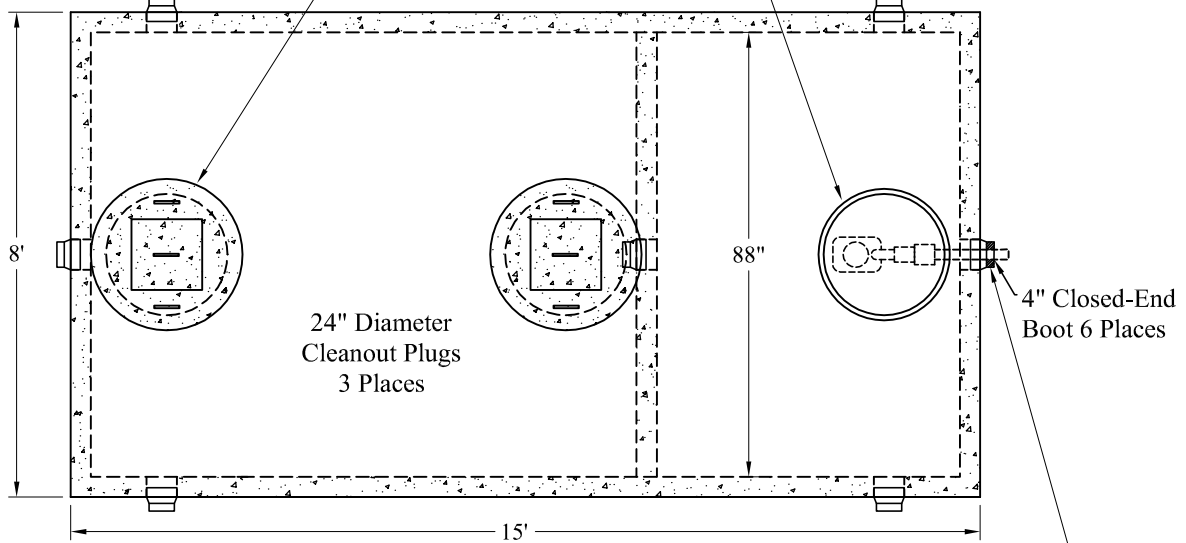
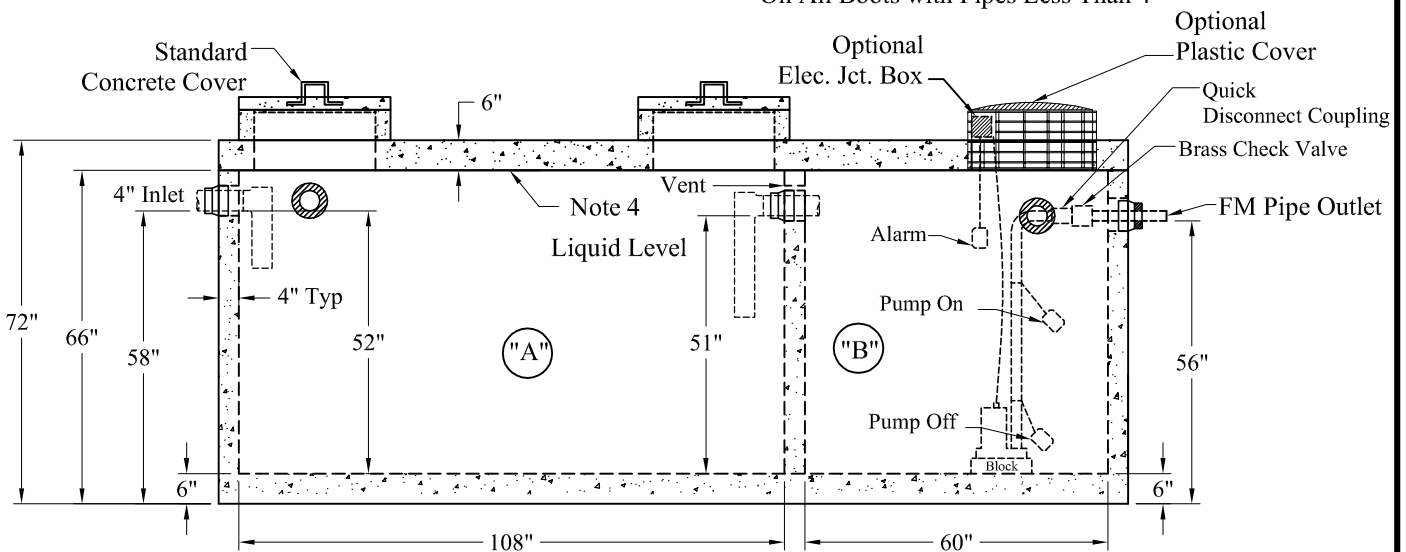


Standard Cover Configuration  
Is (3) 24" Dia Concrete Covers

Optional Cover Configuration  
Is (3) 24" Dia Plastic Risers  
Cast In, With Plastic Covers



NOTE: A Pipe Bushing Will Be Required  
On All Boots with Pipes Less Than 4"



Pumps and Related Accessories are Optional.  
Junction Box And Electrical Connections  
Installed By Others

**General Notes**

1. Steel Reinforcement Conforms to Latest ASTM Specifications: ASTM-A615 Grade 60 Rebar
2. Concrete:  $f_c = 4,000$  psi @ 28 Days Minimum
3. Flexible Sleeves Used On All Pipe Openings
4. Butyl Rubber Joint Sealant Provided
5. Internal PVC Baffles Available
- Inlet: Shall Penetrate at Least 9" Below the Liquid Level, But Not Deeper Than the Outlet Baffle.
- Outlet: Shall Extend Below the Surface of the Liquid Equal to 40% of the Liquid Depth (20").
6. "A" Liquid Level = 495 Gals/VF(41 Gals/In) "A" = 2,103 Gals  
"B" Liquid Level = 275 Gals/VF(23 Gals/In) "B" = 1,122 Gals  
Total = 3,225 Gals
7. HD Tanks: 3' -6' Cover Max, Non-Traffic

Est. Weights:

Top Slab - 8,200 Lbs  
Base - 21,600 Lbs  
Total: 29,800 Lbs

Elevations:	
Rim:	
Invert In:	
Alarm On:	
Pump On:	
Pump Off:	
Inside Floor:	

Phoenix  
Precast  
Products

2,000/1,000 Gallon  
HD 2 Compartment  
Top Seam Pump Tank

P/N: