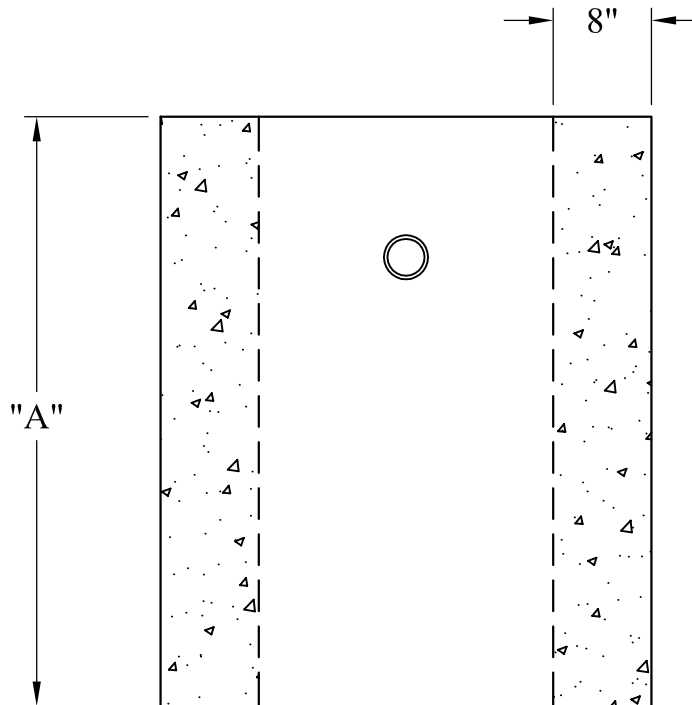


Dim "A"	Est. Weight:
12"	825 Lbs
18"	1,235 Lbs
24"	1,645 Lbs
30"	2,055 Lbs
36"	2,470 Lbs
42"	2,880 Lbs
48"	3,290 Lbs
54"	3,700 Lbs
60"	4,115 Lbs



**General Notes**

- 1.) Concrete:  $f_c = 4,000$  psi @ 28 Days Minimum
- 2.) Design Loading: AASHTO-HS20-44

Phoenix  
Precast  
Products

**2' Diameter  
Drop Inlet Riser**