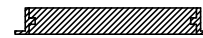
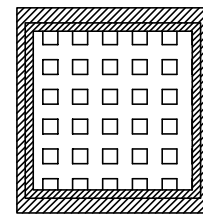
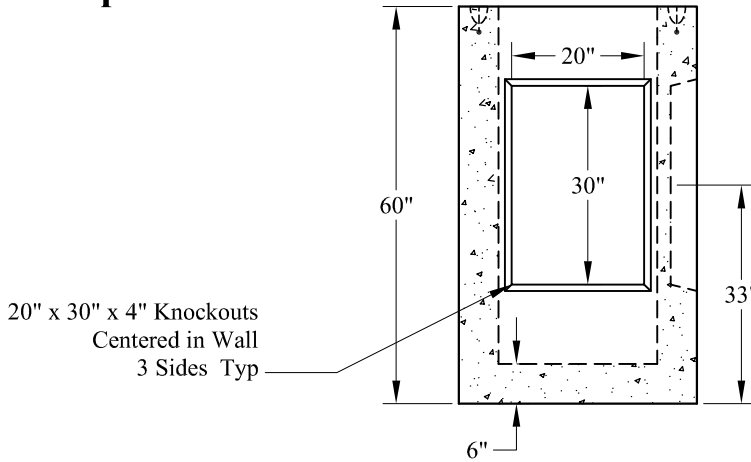
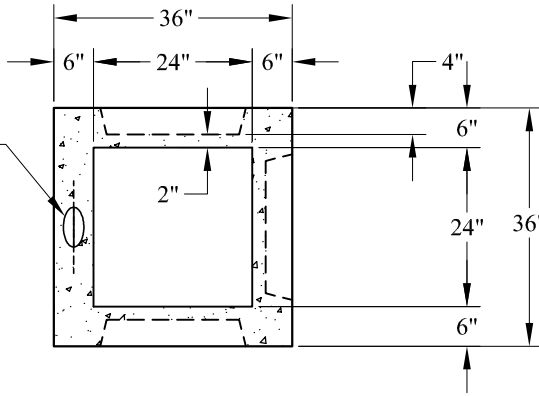


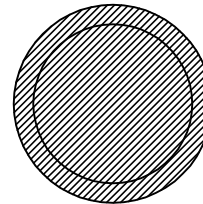
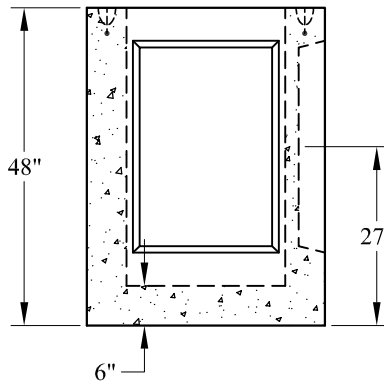
Recessed Lift Handles
2 Places
(1 Not Shown for Clarity)



Optional Cast Iron Frame & Grate

Drop Inlet Base Type 2 (5')

Dim 'A'	Est. Weight:
48"	3,260 Lbs
60"	4,000 Lbs



Optional Cast Iron Frame & Cover

Drop Inlet Base Type 1 (4')

General Notes

- 1.) Reinforcement Steel Conforms To Latest ASTM Specs ASTM A185 & ASTM A615 Grade 60
- 2.) Concrete: $f_c = 4,000$ psi @ 28 Days Minimum
- 3.) Design Loading: AASHTO-HS20-44

Phoenix
Precast
Products

2' Square Area Drains
With Knock-outs