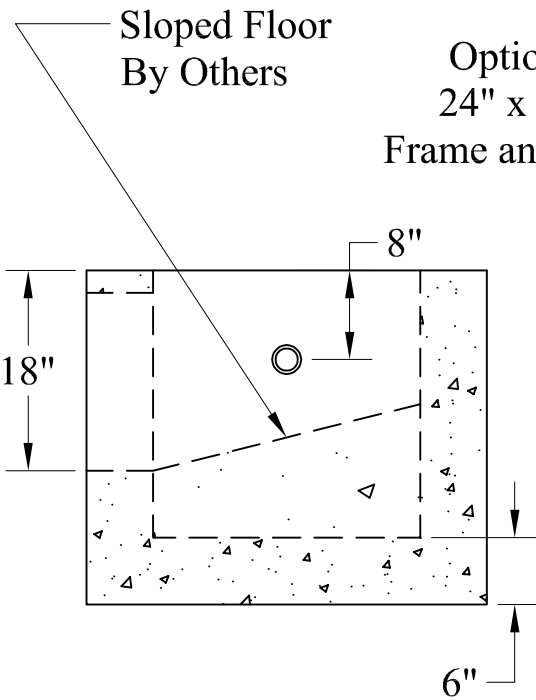
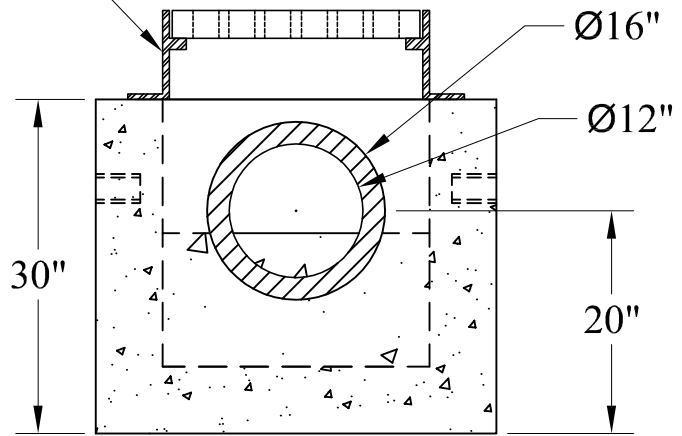


Lift Holes
2 Places



Sloped Floor
By Others

Optional
24" x 24"
Frame and Grate



Ø16"
Ø12"

General Notes

- 1.) Reinforcement Steel Conforms To Latest ASTM Specs ASTM A185 & ASTM A615 Grade 60
- 2.) Concrete: $f_c = 4,000$ psi @ 28 Days Minimum
- 3.) Design Loading: AASHTO-HS20-44
- 4.) Est Weight: 2,150 Lbs

Phoenix
Precast
Products

City Of Cambridge
2' Square Direct Inlet
Single Grate