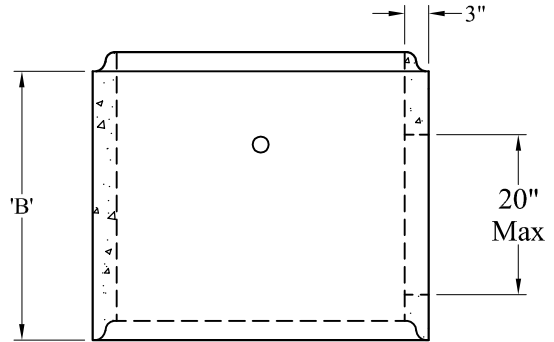


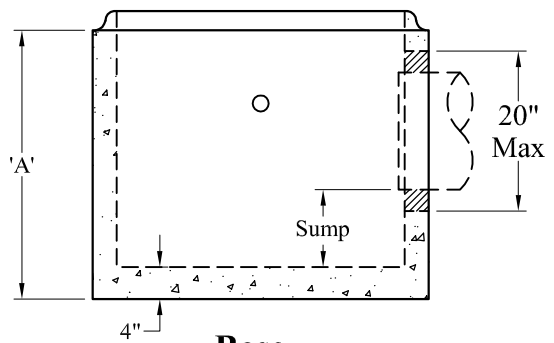
**Top Slab**  
Est Weight: 400 Lbs

Dim 'B'	Est Weight:
12"	380 Lbs
18"	570 Lbs
24"	760 Lbs
36"	1,135 Lbs

Dim 'A'	Est Weight:
12"	725 Lbs
18"	915 Lbs
24"	1,105 Lbs
36"	1,480 Lbs



**Riser**



**Base**

**General Notes**

- 1.) Reinforcement Steel Conforms to Latest ASTM Specifications:  
ASTM A185 and ASTM A615 Grade 60 Rebar
- 2.) Concrete:  $f_c = 4,000$  psi @ 28 Days Minimum
- 3.) Design Loading: AASHTO-HS20-44
- 4.) Sump As Required

Phoenix  
Precast  
Products

3' Diameter  
Area Drain