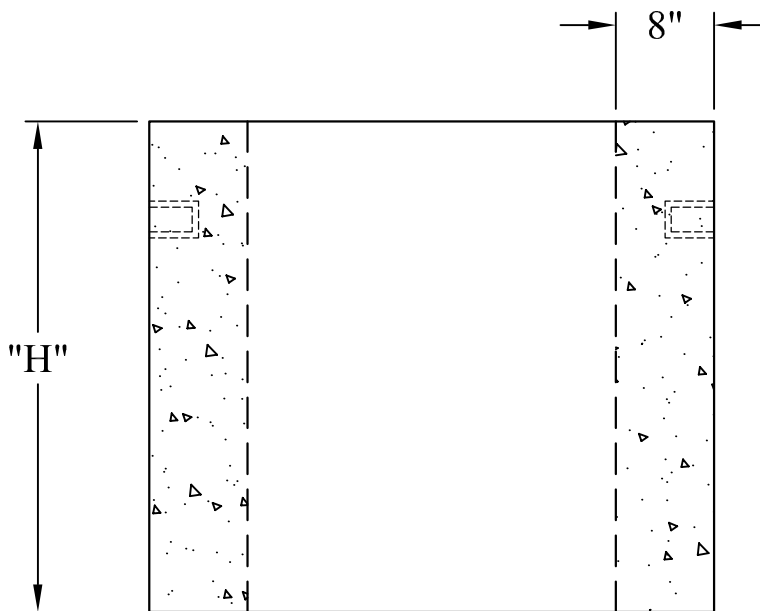


Phoenix Precast Products

Phoenix Precast Products

Dim "H"	Est Weight:
12"	1,000 Lbs
18"	1,500 Lbs
24"	2,000 Lbs
30"	2,500 Lbs
36"	3,000 Lbs



General Notes

- 1.) Concrete: $f_c = 4,000$ psi @ 28 Days Minimum
- 2.) Design Loading: AASHTO-HS20-44

Phoenix
Precast
Products

**30" Diameter
Drop Inlet Riser**