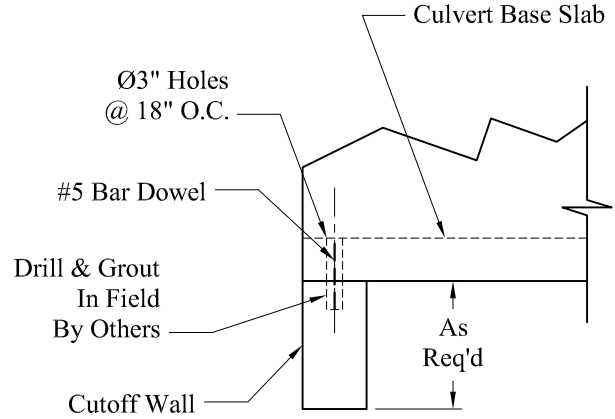
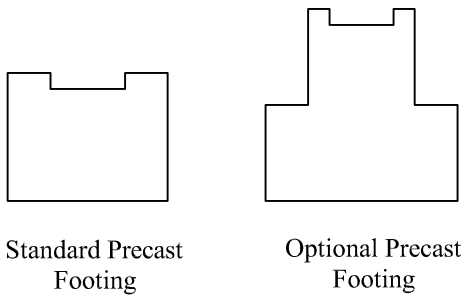


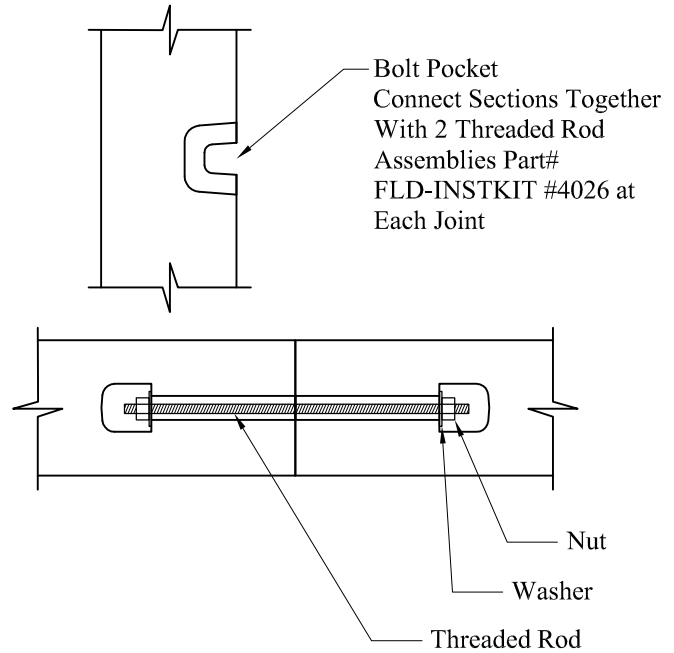
Detail 1  
Precast Headwall Details



Detail 2  
Precast Cutoff Wall Details



Detail 3  
Footing Details



Detail 4  
Bolt Pocket Details

General Notes

1. Concrete:  $f_c = 5,000$  psi @ 28 Days Minimum, Type III Cement
2. Steel Reinforcing Conforms to Latest ASTM Specifications  
ASTM A-615 Grade 60 Rebar
3. Designed per Latest ASTM Specification C-1433
4. Design Loading:  
Live Load : Per Job Specifications  
Dead Load : Per Job Specifications
5. Butyl Rubber Joint Sealant Conforms to ASTM C-990  
and Federal Spec SS-S-210A

Phoenix  
Precast  
Products

Box Culvert  
Standard Details