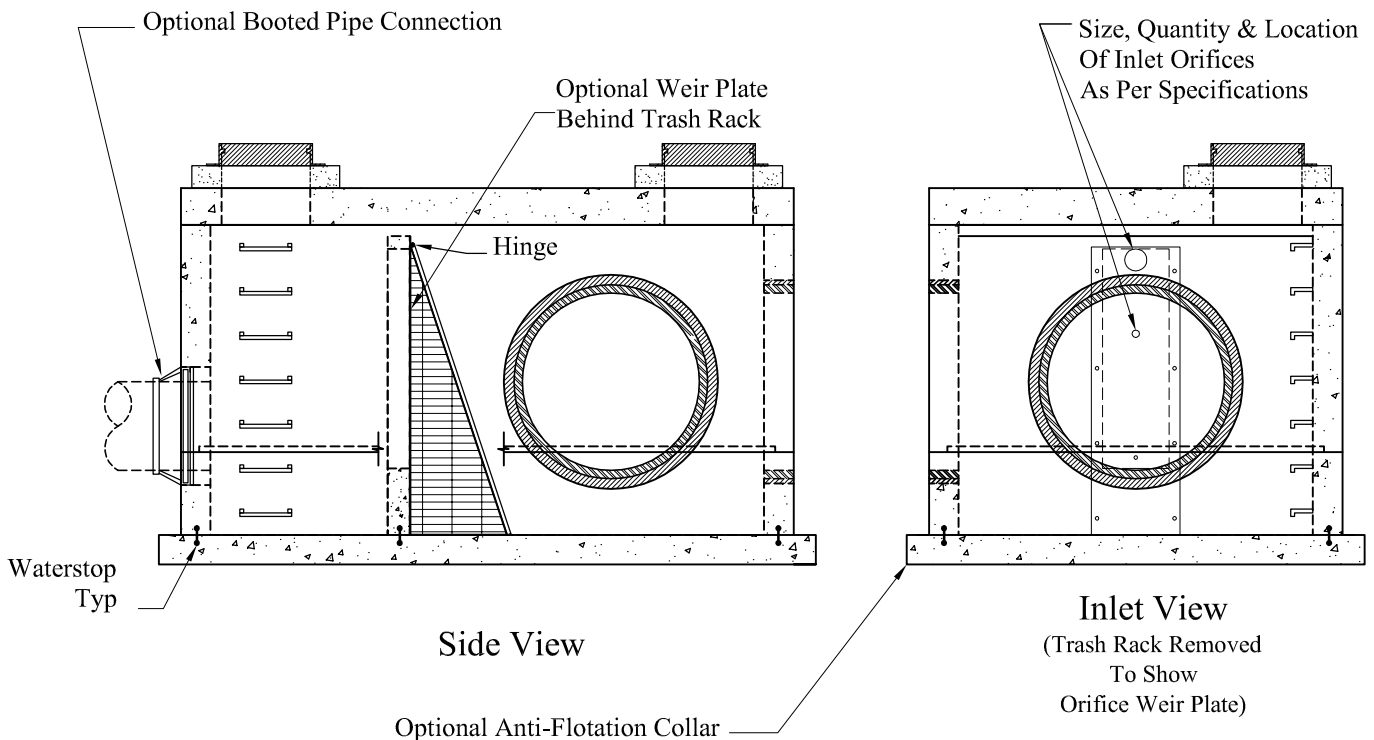


Plan View

Outlet View



Side View

Inlet View  
(Trash Rack Removed To Show Orifice Weir Plate)

**General Notes**

1. Concrete:  $f_c = 5,000$  psi @ 28 Days Minimum, Type III Cement
2. Steel Reinforcing Conforms to Latest ASTM Specifications  
ASTM A-615 Grade 60 Rebar
3. Design Loading: AASHTO-HS20-44
4. Grates/Trash Racks Fastened with SS Hardware
5. Grates/Trash Racks Finish Options: Galvanized, Painted, Or Unfinished

Phoenix  
Precast  
Products

High-Volume Outlet  
Control Structure