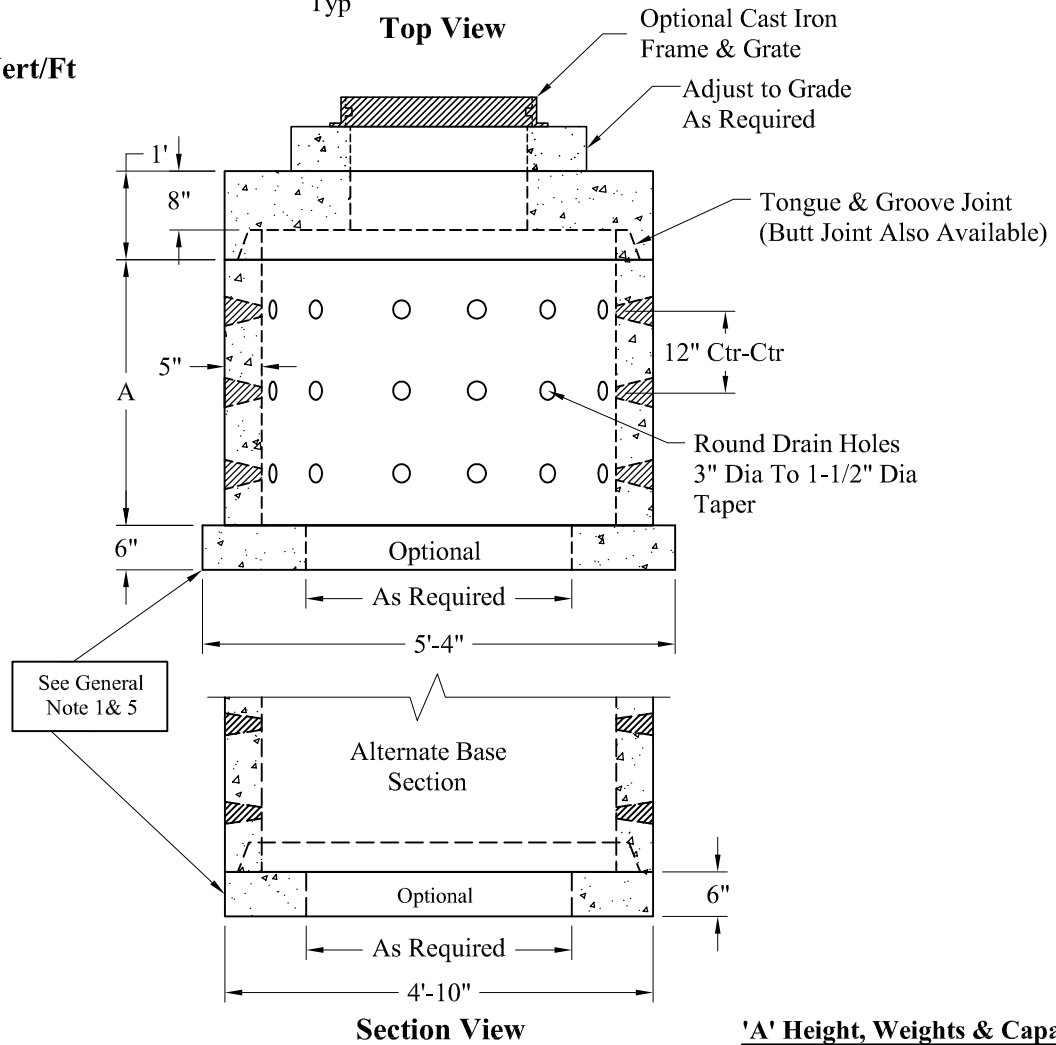


Detail of Openings (NTS)

**Volume:
94 Gals Vert/Ft**

Top View



Section View

'A' Height, Weights & Capacities:

| | | |
|-----------|-----------|----------|
| 2' Riser: | 1,725 Lbs | 188 Gals |
| 3' Riser: | 2,590 Lbs | 282 Gals |
| 4' Riser: | 3,455 Lbs | 376 Gals |
| 5' Riser: | 4,320 Lbs | 470 Gals |
| Top Slab: | 1,970 Lbs | N/A |

General Notes

- 1.) Steel Reinforcement Conforms To Latest ASTM Specifications:
ASTM A-615 Grade 60 Rebar
ASTM A-185 Welded Wire Fabric 0.12 Square Inch / Lineal Foot And 0.12 Square Inch (Both Ways) Base Bottom
- 2.) Concrete: $f_c = 4,000$ psi @ 28 Days Minimum
- 3.) Design Loading: AASHTO-HS20-44
- 4.) Hole Coring Available for Larger Diameter Pipes
- 5.) Solid Base Slab or With Opening As Required

Phoenix
Precast
Products

4' I.D. Dry Well
With Base Slab