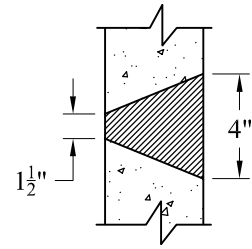
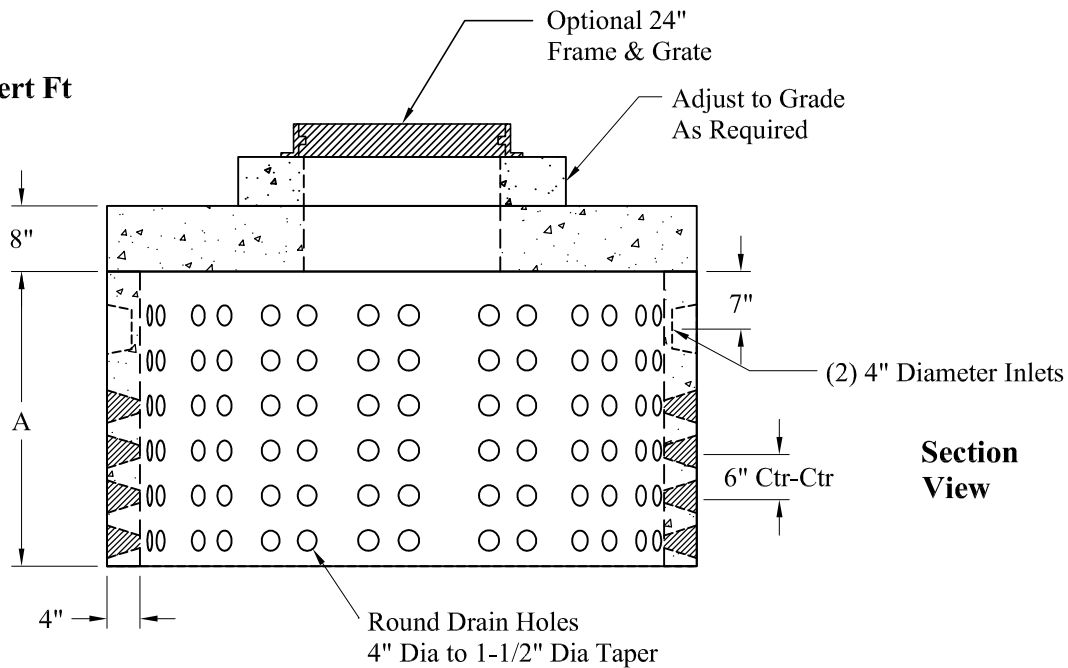


Top View



Detail Of Openings (NTS)

Volume:
167 Gals/Vert Ft



Section View

"A" Height	Weight	Capacity:
2'	1,650 Lbs	334 Gallons
3'	2,440 Lbs	501 Gallons
4'	3,300 Lbs	668 Gallons
5'	4,090 Lbs	835 Gallons
6'	4,880 Lbs	1,002 Gallons
7'	5,740 Lbs	1,169 Gallons
8'	6,600 Lbs	1,336 Gallons

General Notes

- 1.) Steel Reinforcement Conforms To Latest ASTM Specifications:
ASTM A-615 Grade 60 Rebar
ASTM A-185 Welded Wire Fabric
- 2.) Concrete: $f_c = 4,000$ psi @ 28 Days Minimum
- 3.) Design Loading: AASHTO-HS20-44
- 4.) Optional Cast Iron Covers or Concrete Covers Available
- 5.) Hole Coring Available for Larger Diameter Pipes
- 6.) All Sections Are Butt Joint

Phoenix
Precast
Products

6' O.D. Dry Well