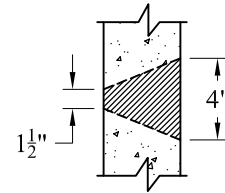
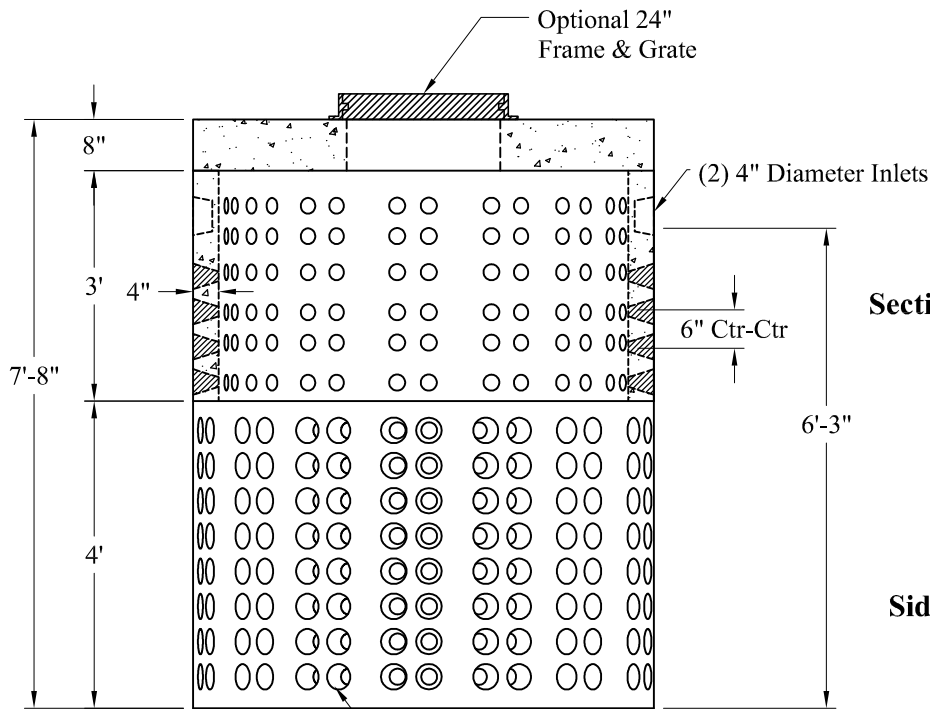


Volume:
167 Gals/Vert Ft

Top View



Detail Of Openings
(NTS)



Section View

Side View

Est Weight:

Top Slab:	2,490 Lbs
3' Riser:	2,440 Lbs
4' Riser:	3,300 Lbs
Total:	8,230 Lbs

General Notes

- 1.) Steel Reinforcement Conforms To Latest ASTM Specifications:
ASTM A-615 Grade 60 Rebar
ASTM A-185 Welded Wire Fabric
- 2.) Concrete: $f_c = 4,000$ psi @ 28 Days Minimum
- 3.) Design Loading: AASHTO-HS20-44
- 4.) Optional Cast Iron Covers or Concrete Covers Available
- 5.) Hole Coring Available for Larger Diameter Pipes
- 6.) All Sections Are Butt Joint

**Phoenix
Precast
Products**

**6' O.D. Dry Well
1,200 Gallons**

P/N: