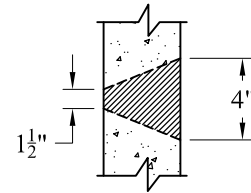
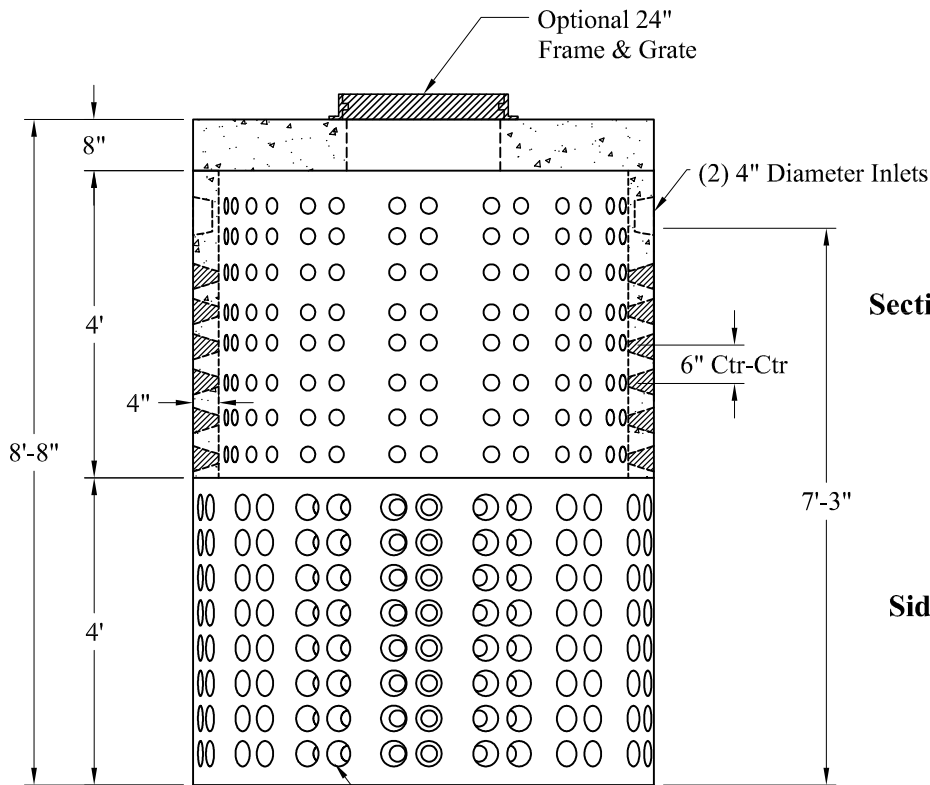


**Volume:**  
167 Gals/Vert Ft

**Top View**



**Detail Of Openings**  
(NTS)



**Section View**

**Side View**

Round Drain Holes  
4" Dia to 1-1/2" Dia Taper

**Est Weight:**  
Top Slab: 2,490 Lbs  
Risers: 6,600 Lbs  
Total: 9,090 Lbs

**General Notes**

- 1.) Steel Reinforcement Conforms To Latest ASTM Specifications:  
ASTM A-615 Grade 60 Rebar  
ASTM A-185 Welded Wire Fabric
- 2.) Concrete:  $f_c = 4,000$  psi @ 28 Days Minimum
- 3.) Design Loading: AASHTO-HS20-44
- 4.) Optional Cast Iron Covers or Concrete Covers Available
- 5.) Hole Coring Available for Larger Diameter Pipes
- 6.) All Sections Are Butt Joint

Phoenix  
Precast  
Products

6' O.D. Dry Well  
1,300 Gallons

P/N: