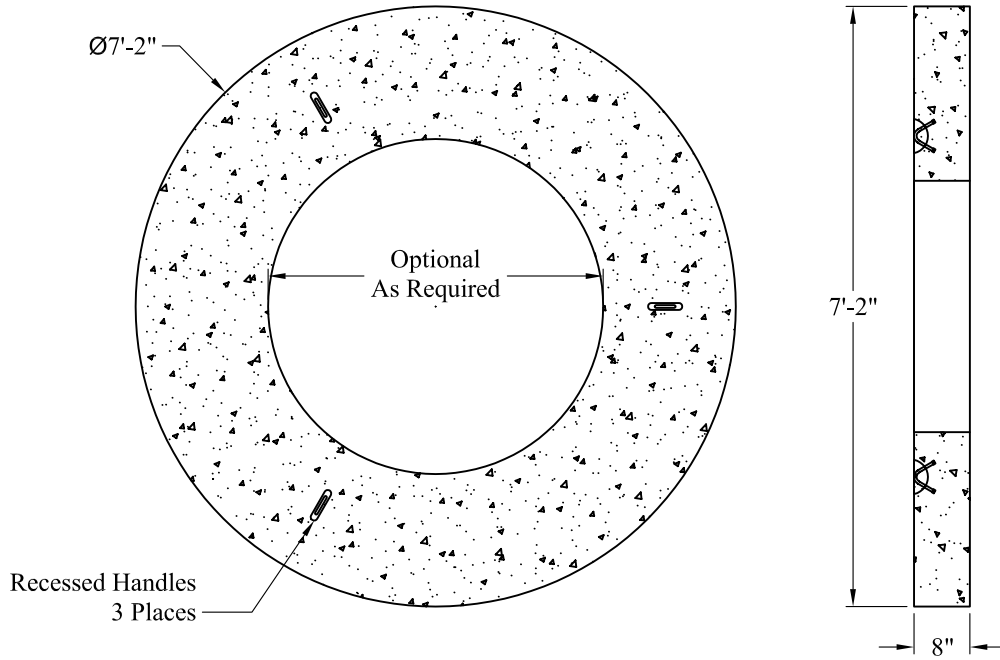
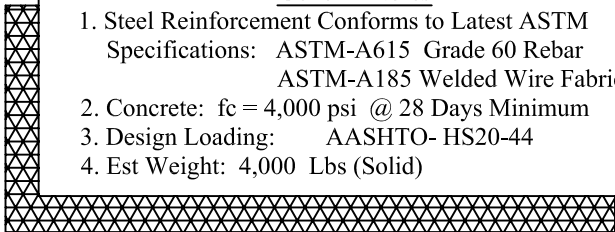


Available As Solid Or With Central Hole,
Sized As Required



General Notes

1. Steel Reinforcement Conforms to Latest ASTM Specifications: ASTM-A615 Grade 60 Rebar
ASTM-A185 Welded Wire Fabric
2. Concrete: $f_c = 4,000$ psi @ 28 Days Minimum
3. Design Loading: AASHTO- HS20-44
4. Est Weight: 4,000 Lbs (Solid)



Phoenix
Precast
Products

Base Slab For 6' O.D.
Dry Well