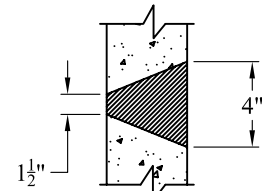
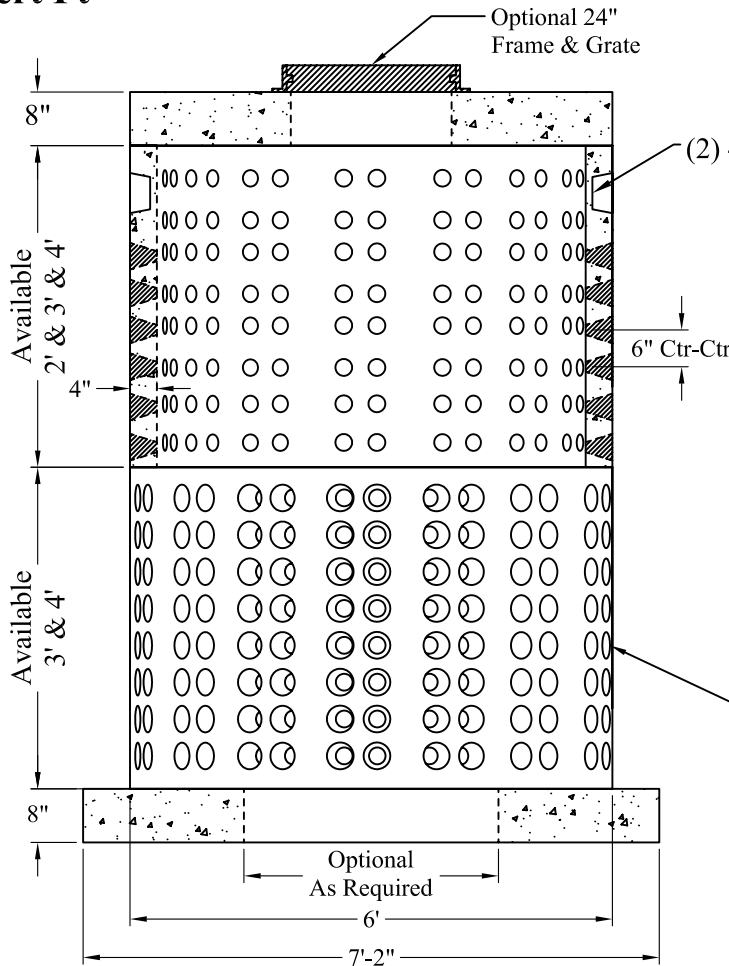


Top View



Detail Of Openings (NTS)

Volume:
167 Gals/Vert Ft



Section View

Side View

Round Drain Holes
4" Dia to 1-1/2" Dia Taper

General Notes

- 1.) Steel Reinforcement Conforms To Latest ASTM Specifications:
ASTM A-615 Grade 60 Rebar
ASTM A-185 Welded Wire Fabric
- 2.) Concrete: $f_c = 4,000$ psi @ 28 Days Minimum
- 3.) Design Loading: AASHTO-HS20-44
- 4.) Optional Cast Iron Covers or Concrete Covers Available
- 5.) Hole Coring Available for Larger Diameter Pipes
- 6.) All Sections Are Butt Joint
- 7.) Solid Base Or With An Opening, As Required

Phoenix
Precast
Products

Deep
6' O.D. Dry Well
With Base Slab

Concord, NH 03301