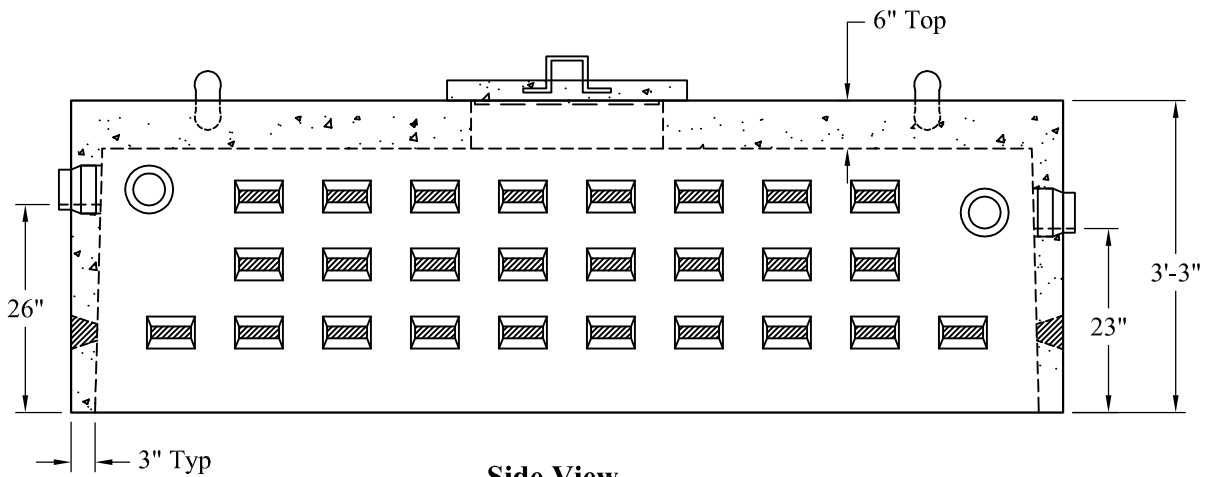


Top View



Side View

Est Weight: 8,160 Lbs

General Notes

1. Steel Reinforcement Conforms to Latest ASTM Specifications: ASTM-A615 Grade 60 Rebar
ASTM-A185 Welded Wire Fabric
2. Concrete: $f_c = 4,000$ psi @ 28 Days Minimum
3. Flexible Sleeves Used On All Pipe Openings
4. Heavy Duty: 3' -6' Cover Max, Non-Traffic

Phoenix
Precast
Products

1,000 Gallon HD
Rectangular Drywell

P/N: