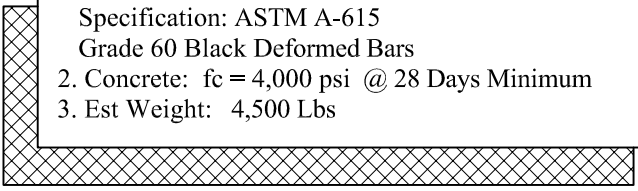


General Notes

1. Steel Reinforcement Conforms to Latest ASTM Specification: ASTM A-615 Grade 60 Black Deformed Bars
2. Concrete: $f_c = 4,000$ psi @ 28 Days Minimum
3. Est Weight: 4,500 Lbs



Phoenix
Precast
Products

Precast Headwall
15" Pipe

P/N: HWS-15