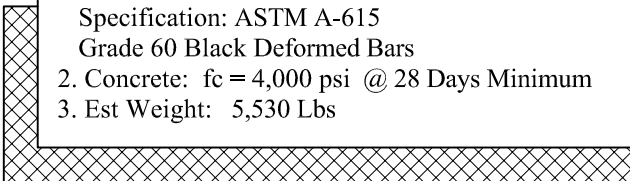


**General Notes**

- 1. Steel Reinforcement Conforms to Latest ASTM Specification: ASTM A-615 Grade 60 Black Deformed Bars
- 2. Concrete:  $f_c = 4,000$  psi @ 28 Days Minimum
- 3. Est Weight: 5,530 Lbs



Phoenix  
Precast  
Products

Precast Headwall  
18" Pipe

P/N: HWS-18