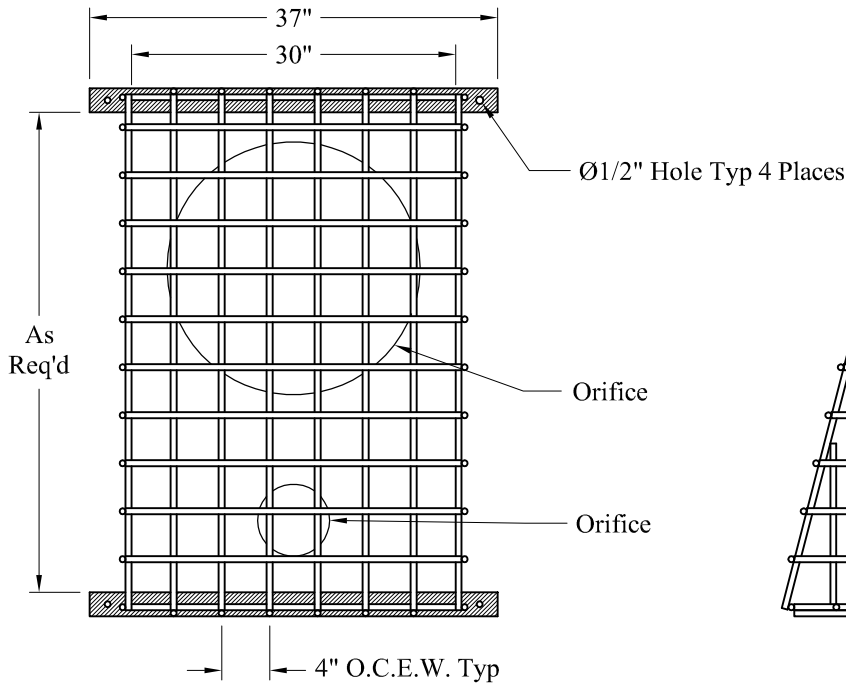
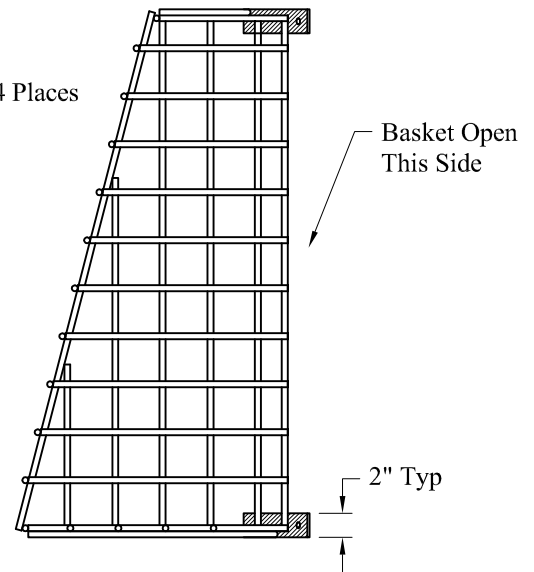


Top View



Front View



Side View

**General Notes**

1. Materials:
  - 2" x 3/16" Flat Steel Bar
  - 1/2" Dia HR Round Steel Bars @ 4" O.C.E.W.
2. Finish Options:
  - A. Unfinished
  - B. Painted
  - C. Hot Dip Galvanized
3. Fastening Method:
  - Bolted With 3/8" Stainless Steel Concrete Anchors

Note:  
4" x 4" Pattern is  
Continued on Underside

Phoenix Precast Products	Round Structure Trash Rack Angled 30" Adjustable
--------------------------------	--

P/N: