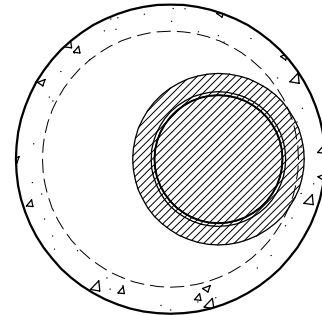
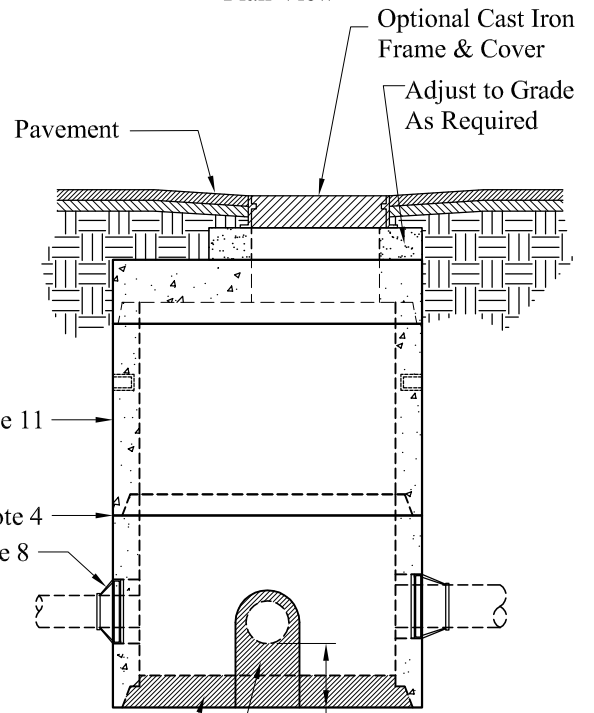
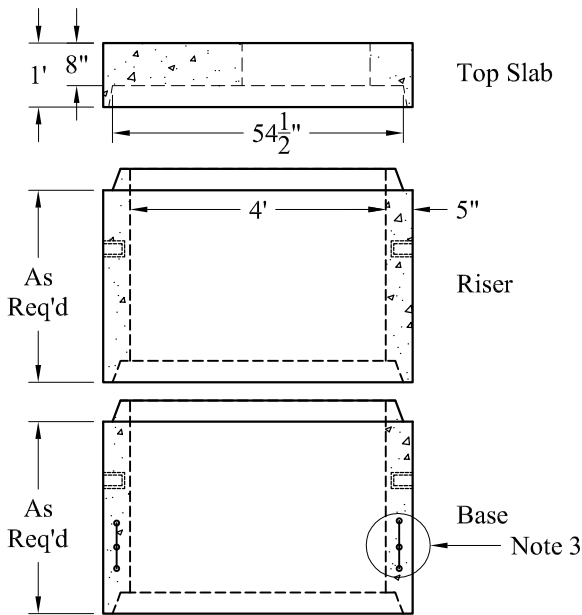


Plan View - Top Slab



Plan View



Floor is Cast in Place
By Others
After Setting Manhole
Mortar Joint by Others

Est Weights:

Top Slab: 2,000 Lbs
Wt/VF: 864 Lbs

General Notes

1. Concrete: $f_c = 4,000$ psi @ 28 Days Minimum, Type III Cement
2. HS-20 Design Loading Conforms to Latest Specifications ASTM C478, AASHTO M199 Precast Reinforced Concrete Manhole Sections
3. Steel Reinforcement Conforms to Latest ASTM Specification: ASTM A-615, Grade 60 Black Deformed Bars
ASTM A-185 Welded Wire Fabric
0.12 Sq. In./Lineal Ft. And 0.12 Sq. In.(Both Ways) Base Bottom
4. Butyl Rubber Joint Sealant Provided Conforms to ASTM C-990 And Federal Spec SS-S-210A
5. 94 Gallons/VF
6. Holes & Elevations TBD
7. Sections Available in Increments of 6"
8. Booted Pipe Connections (If Used) Conform to ASTM C-923. Maximum Booted Connection Pipe Size is 24"
9. Maximum Pipe OD is 32" (24" RCP)
10. Plastic Manhole Steps (If Required) are Steel Reinforced Conforming to ASTM C-478
11. Asphaltic Exterior Coating Available

Phoenix Precast Products	4' Diameter Sanitary Manhole Doghouse
--------------------------------	---