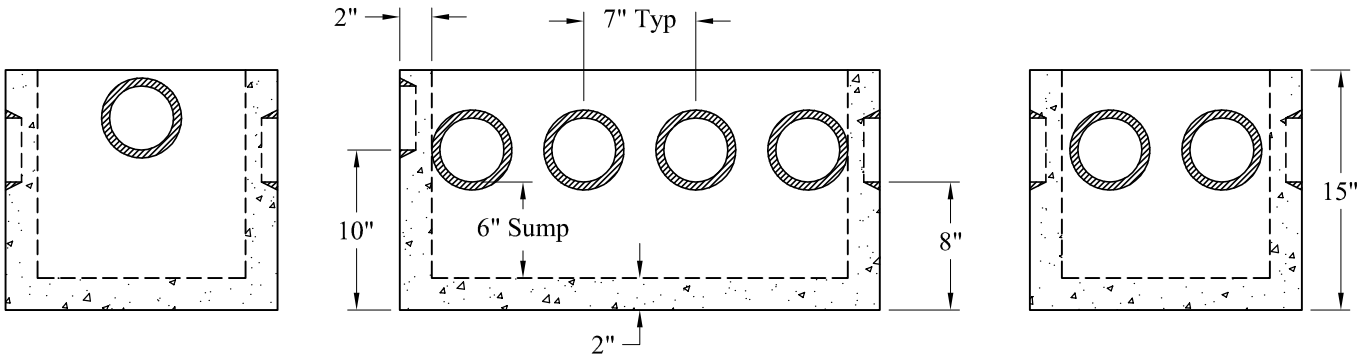
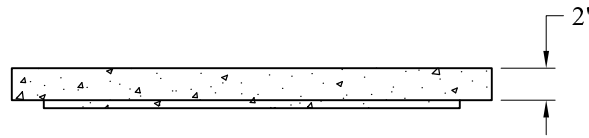


Plan View



Inlet End

Section View

Outlet End

General Notes

- 1.) Concrete: $f_c = 4,000$ PSI @ 28 Days Minimum
- 2.) Plastic Pipe Seals On All Openings
- 3.) Weight:
 - Box: 329 Lbs
 - Cover: 111 Lbs
 - Total: 375 Lbs

Phoenix
Precast
Products

10 Outlet
"D" Box
With Sump

P/N: DB-10