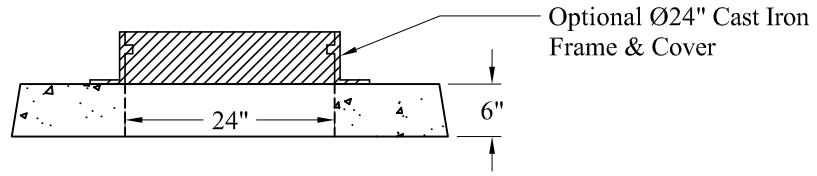
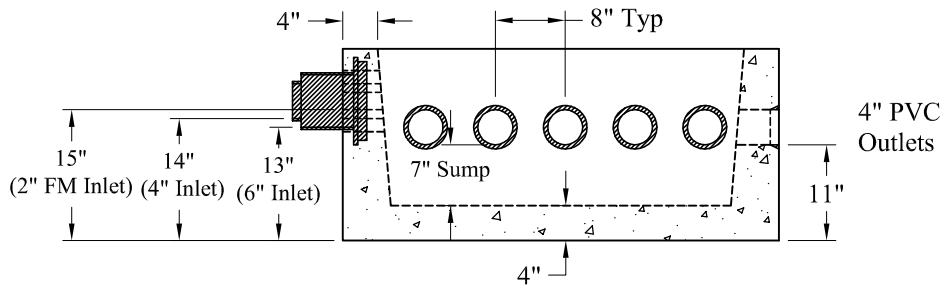


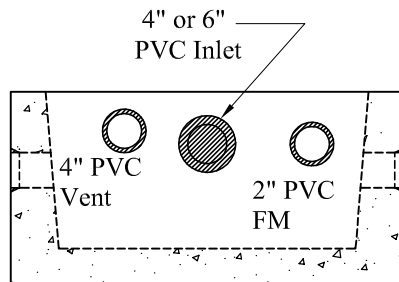
Plan View



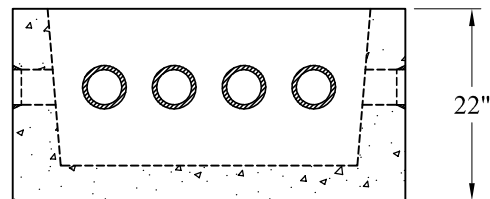
Optional Ø24" Cast Iron Frame & Cover



Section View



Inlet End



Outlet End

General Notes

- 1.) Concrete: $f_c = 4,000$ PSI @ 28 Days Minimum
- 2.) Steel Reinforcement Conforms to Latest ASTM Specifications: ASTM A-615 Grade 60 Rebar
- 3.) Design Loading: AASHTO-HS20-44
- 4.) Plastic Pipe Seals Typical 16 Places
- 5.) Closed End Boot on Inlet Side for 4" or 6" Pipe
- 6.) Pipe Bushing Required for Force Mains Into D-Box Less Than 4" Dia.
- 7.) Est Weights:
 - Box: 1,850 Lbs
 - Top Slab: 1,015 Lbs
 - Total: 2,865 Lbs

Phoenix
Precast
Products

14 Outlet
HS-20 "D" Box
With Sump

P/N: DB-14H20