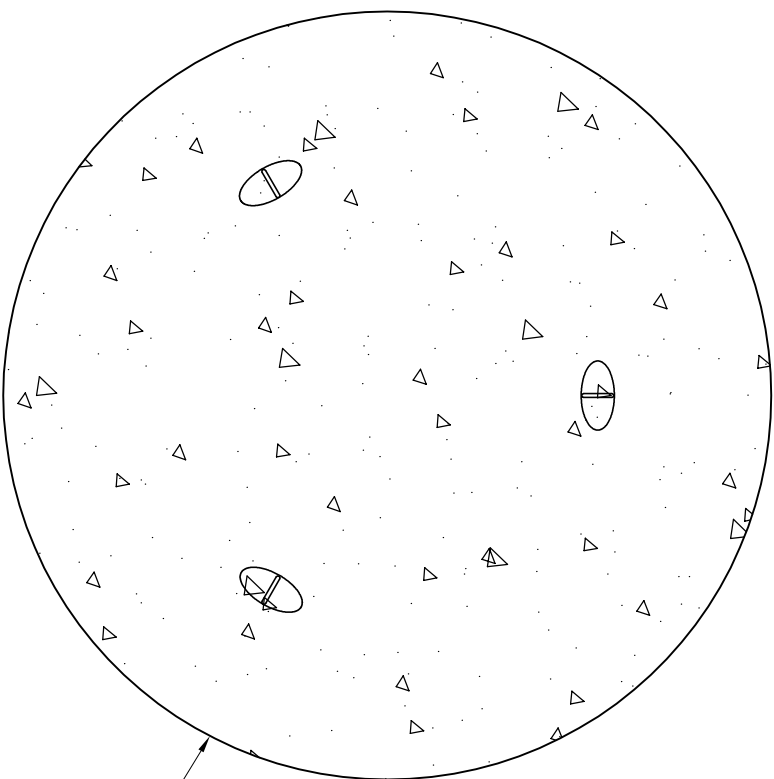


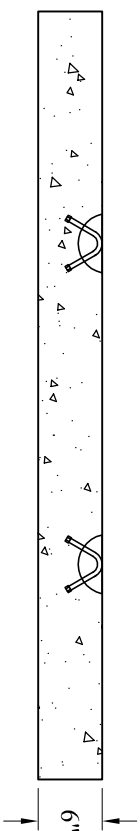
- 1. Concrete:  $f_c = 5,000$  psi @ 28 Days Minimum
- 2. Reinforcing Steel: ASTM-A615 Grade #60
- 3. Design Loading: AASHTO-HS20-44

Est Weight: 2,100 Lbs



Ø72"  
(Std 5' Dia)

Recessed Handles (3x)



P/N: MH5-TSSOLIDBT(6"THK)

Date	01/24/13	Drawn By:	EWS
Rev:	2	App'd:	

Phoenix  
Precast  
Products

D-Box  
Leveling Slab  
(Large)

77 Regional Drive

Concord, NH 03301