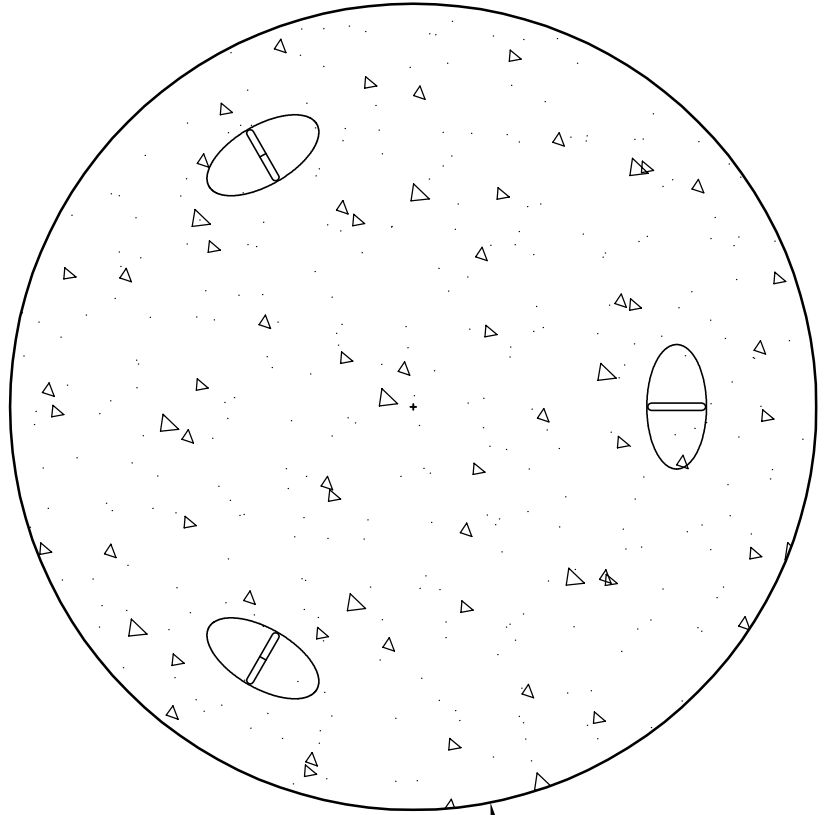
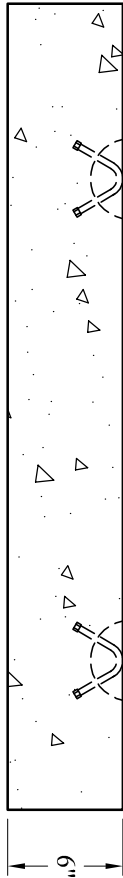


- 1. Concrete: fc = 5,000 psi @ 28 Days Minimum
 - 2. Reinforcing Steel: ASTM-A615 Grade #60
 - 3. Design Loading: AASHTO-HS20-44
- Est Weight: 720 Lbs



Recessed Handles (3x)



P/N: WTC-BUTTSOLID

Date	01/23/13	Drawn By:	EWS
Rev:	2	App'd:	

Phoenix Precast Products	D-Box Leveling Slab (Small)
--------------------------------	--------------------------------