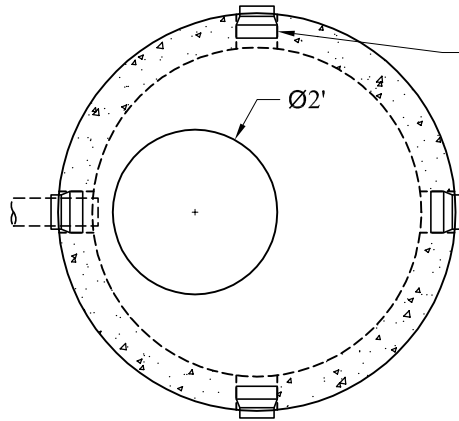
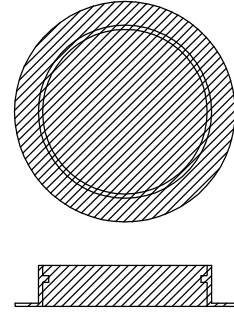


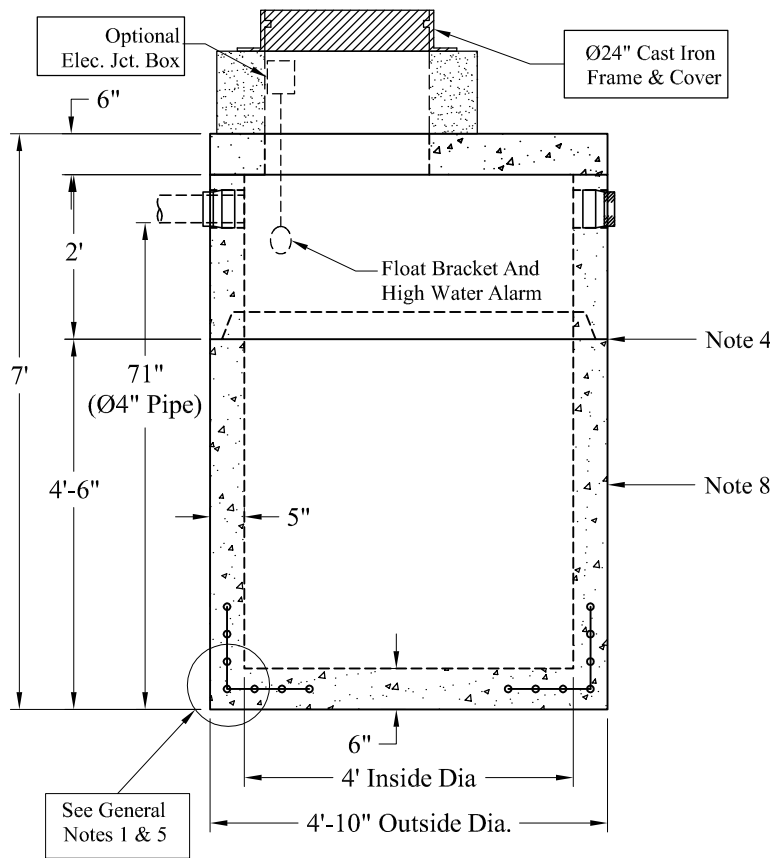
Alarms and Related Accessories are Optional.  
 Junction Box and Electrical Connections  
 Installed by Others



4" Closed-End  
 Boot  
 4 Places



Ø24" Cast Iron Frame & Cover



See General  
 Notes 1 & 5

**General Notes**

- 1.) Reinforcement Steel Conforms To Latest ASTM A 185 Specifications: 0.12 Sq. In. / Lineal Ft. And 0.12 Sq./In. (Both Ways) Base Bottom
- 2.) Concrete:  $f_c = 4,000$  psi @ 28 Days Minimum
- 3.) Manhole Design:  
 Conforms To The Latest ASTM C478 Specifications For "Precast Reinforced Concrete Manhole Sections".  
 Design Loading: AASHTO-HS20-44
- 4.) Butyl Rubber Joint Sealant Provided
- 5.) One Pour Monolithic Base Section
- 6.) Liquid Capacity: 94 Gallons/VF (8 Gallons/Inch)
- 7.) Flexible Boots Provided
- 8.) Exterior Coating Available

**Est. Weight:**

Top Slab:	1,150 Lbs
2' Riser:	1,760 Lbs
4'-6" Base:	4,960 Lbs
<b>Total:</b>	<b>7,870 Lbs</b>

<b>Elevations:</b>	
Rim:	
Invert In:	
Alarm On:	
Inside Floor:	

Phoenix  
 Precast  
 Products

4' Diameter  
 HS-20 500 Gallon  
 Holding Tank

P/N:

Phoenix Precast Products

Phoenix Precast Products

Std Structures\4Ft Dia\500 Gallon H20 Holding Tank