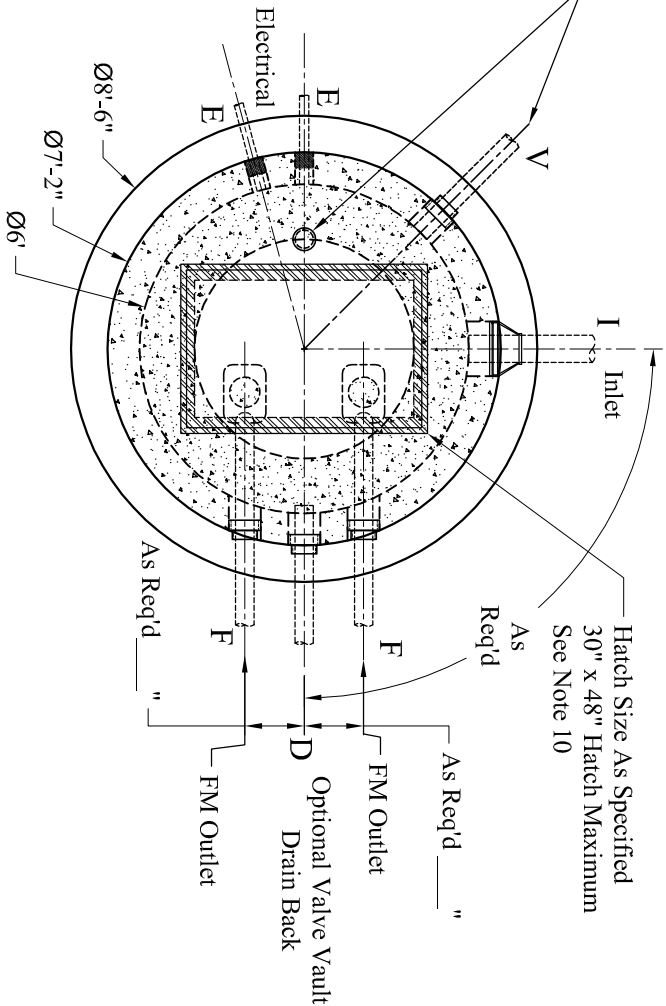
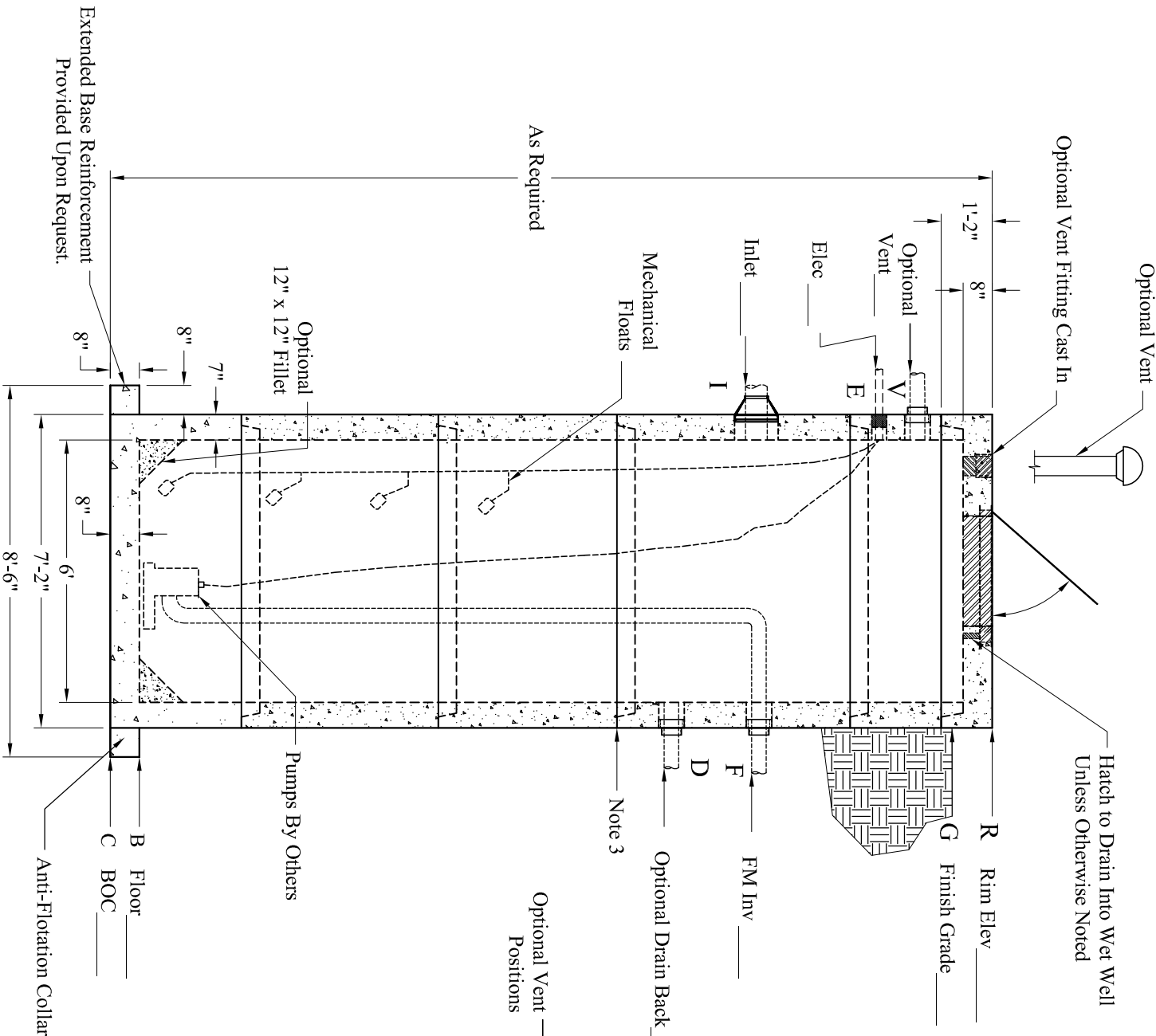


Pipe Chart		
Pipe	Pipe OD	Connection
V		
E		
I		
F		
D		
B		

Elevation Chart		
Description	Elevation	
Rim		
Finish Grade		
Vent		
Electric Connection(s)		
Inlet		
Force Main Outlet		
Drain Back from Valve Vault		
Inside Bottom Floor		
Outside Bottom of Concrete		



- Options:
- LinkSeal Pipe Connections
 - LinkSeal Electrical Connections
 - Exterior Damp Proofing/Water Proofing
 - Interior Coatings
 - Interior Fillet
 - Exterior Joint Wrap
 - Safety Net, Safety Grate
 - Winch Socket
- Est Weights:
- Top Slab: 4,440 Lbs
 - Risers: 1,775 Lbs/VF
 - 1' x 1' x 6Ø Fillet: 1,200 Lbs
 - Ext Base Slab: 5,625 Lbs
- 1.) Steel Reinforcement Conforms To Latest ASTM Specifications:
ASTM A-615 Grade 60 Black Deformed Bars
ASTM A-185 Welded Wire Fabric
Concrete: $f_c = 5,000$ PSI @ 28 Days Minimum, Type III Cement
Butyl Rubber Joint Sealant Conforms to ASTM C-990 and Federal Spec SS-S-210A.
Flexible Connection Provided For All Pipe Connections.
All Pumps, Mounting Hardware, and Related Ancillary Equipment Provided by Others.
Liquid Capacity = 212 Gallons/Vertical Foot (18 Gallons/Inch)
HS-20 Design Loading Conforms to Latest Specifications ASTM C478, AASHTO M199 Precast Reinforced Concrete Manhole Sections
Hatch to Drain Into Wet Well Unless Otherwise Noted
Based on Structural & Bouyancy Considerations. This Base Design May be Used with Pump Stations up to 30 Feet Deep Without Additional Engineering.
Contact Phoenix for Hatch Requirements Exceeding these Dimensions

Phoenix Precast Products

Phoenix Precast Products

Customer:	Job No.	Date	Drawn By:
Location:	Custom No.	12/20/13	EWS
		Rev: 3	App'd:

Phoenix Precast Products

6' Diameter Pump Station Wet Well Extended Base