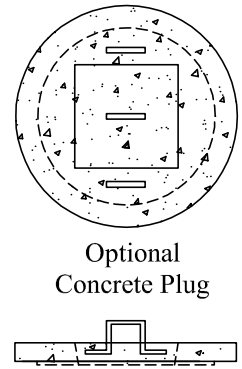
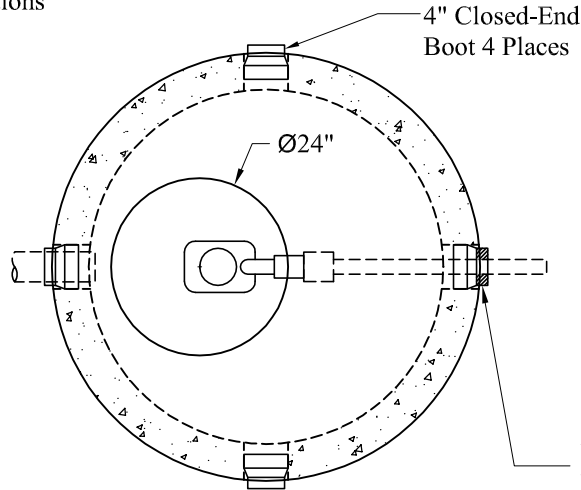
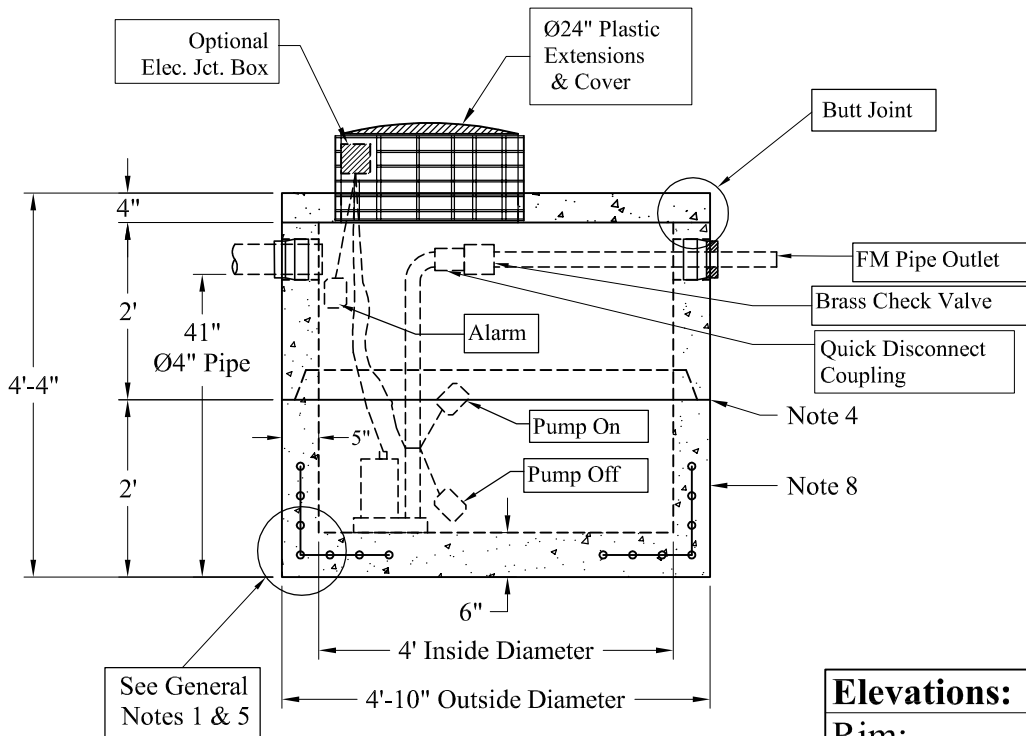


Pumps and Related Accessories are Optional.
 Junction Box and Electrical Connections
 Installed by Others



NOTE: A Pipe Bushing
 Will be Required on all
 Boots with Pipes Less Than 4"



Elevations:	
Rim:	
Invert In:	
Alarm On:	
Pump On:	
Pump Off:	
Inside Floor:	

Est. Weight:	
Top Slab:	850 Lbs
2' Riser:	1,760 Lbs
2' Base:	2,800 Lbs
Total:	5,410 Lbs

General Notes

- 1.) Reinforcement Steel Conforms To Latest ASTM A 185 Specifications: 0.12 Sq. In. / Lineal Ft. And 0.12 Sq./In. (Both Ways) Base Bottom
- 2.) Concrete: $f_c = 4,000$ psi @ 28 Days Minimum
- 3.) Manhole Design:
 Conforms To The Latest ASTM C478 Specifications For "Precast Reinforced Concrete Manhole Sections".
- 4.) Butyl Rubber Joint Sealant Provided
- 5.) One Pour Monolithic Base Section
- 6.) Liquid Capacity: 94 Gallons/VF (8 Gallons/Inch)
- 7.) Flexible Boots Provided
- 8.) Exterior Coating Available

Phoenix Precast Products	4' Diameter LD 250 Gallon Pump Chamber
	P/N: