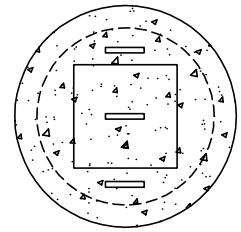
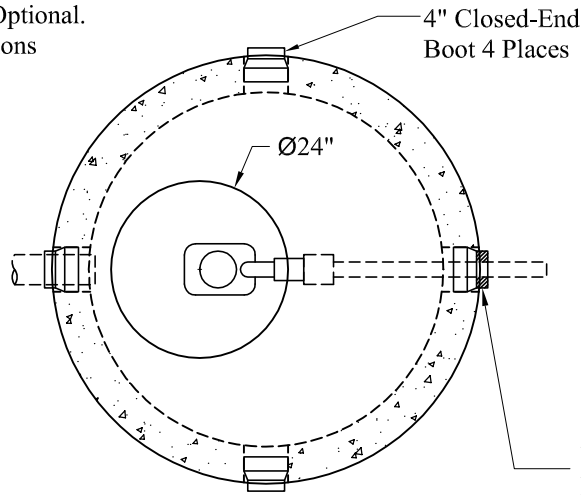


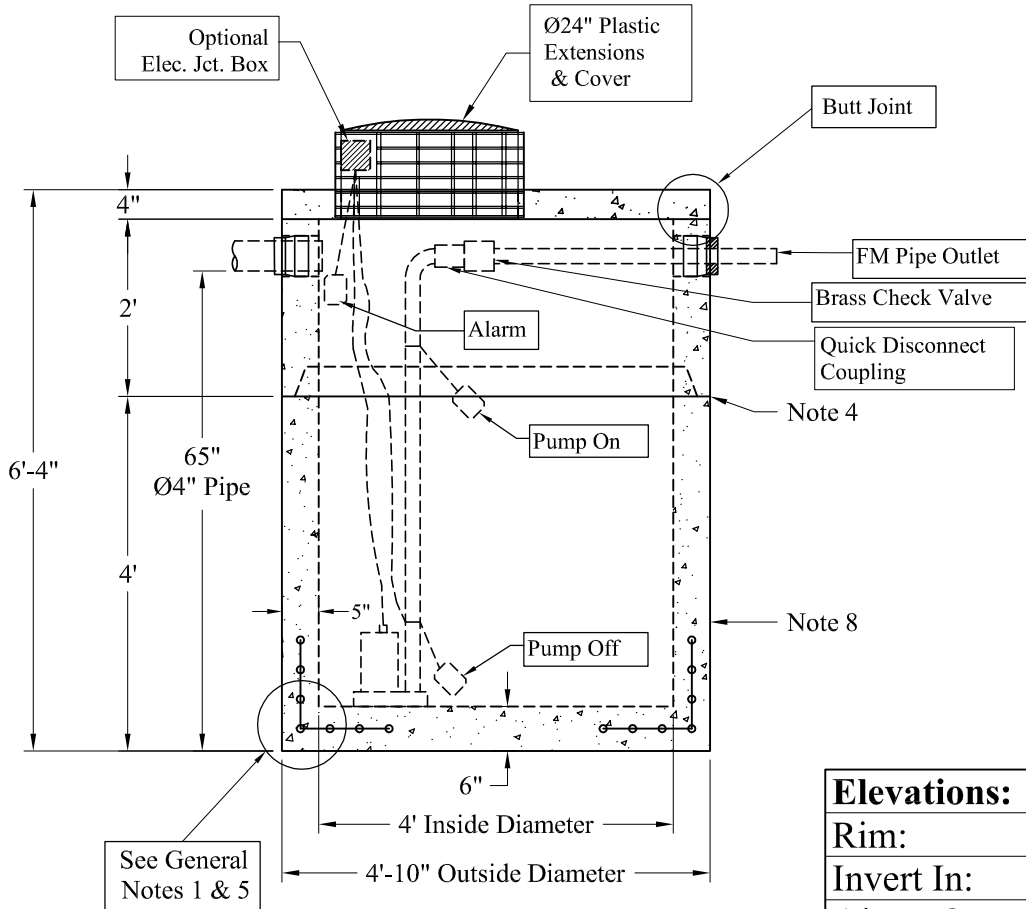
Pumps and Related Accessories are Optional.  
Junction Box and Electrical Connections  
Installed by Others



Optional  
Concrete Plug



NOTE: A Pipe Bushing  
Will be Required on all  
Boots with Pipes Less Than 4"



Phoenix Precast Products

Phoenix Precast Products

**General Notes**

- 1.) Reinforcement Steel Conforms To Latest ASTM A 185 Specifications: 0.12 Sq. In. / Lineal Ft. And 0.12 Sq./In. (Both Ways) Base Bottom
- 2.) Concrete:  $f_c = 4,000$  psi @ 28 Days Minimum
- 3.) Manhole Design:  
Conforms To The Latest ASTM C478 Specifications For "Precast Reinforced Concrete Manhole Sections".
- 4.) Butyl Rubber Joint Sealant Provided
- 5.) One Pour Monolithic Base Section
- 6.) Liquid Capacity: 94 Gallons/VF (8 Gallons/Inch)
- 7.) Flexible Boots Provided
- 8.) Exterior Coating Available

**Est. Weight:**

|               |                  |
|---------------|------------------|
| Top Slab:     | 850 Lbs          |
| 2' Riser:     | 1,760 Lbs        |
| 4' Base:      | 4,520 Lbs        |
| <b>Total:</b> | <b>7,130 Lbs</b> |

|                    |  |
|--------------------|--|
| <b>Elevations:</b> |  |
| Rim:               |  |
| Invert In:         |  |
| Alarm On:          |  |
| Pump On:           |  |
| Pump Off:          |  |
| Inside Floor:      |  |

**Phoenix  
Precast  
Products**

**4' Diameter LD  
450 Gallon  
Pump Chamber**

P/N: