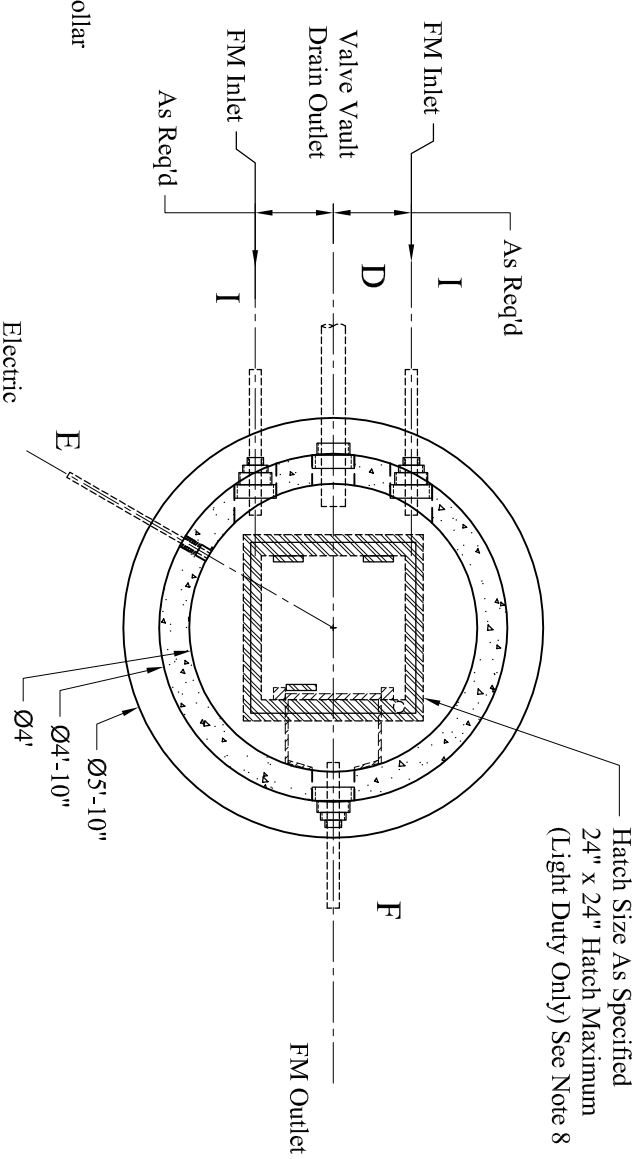
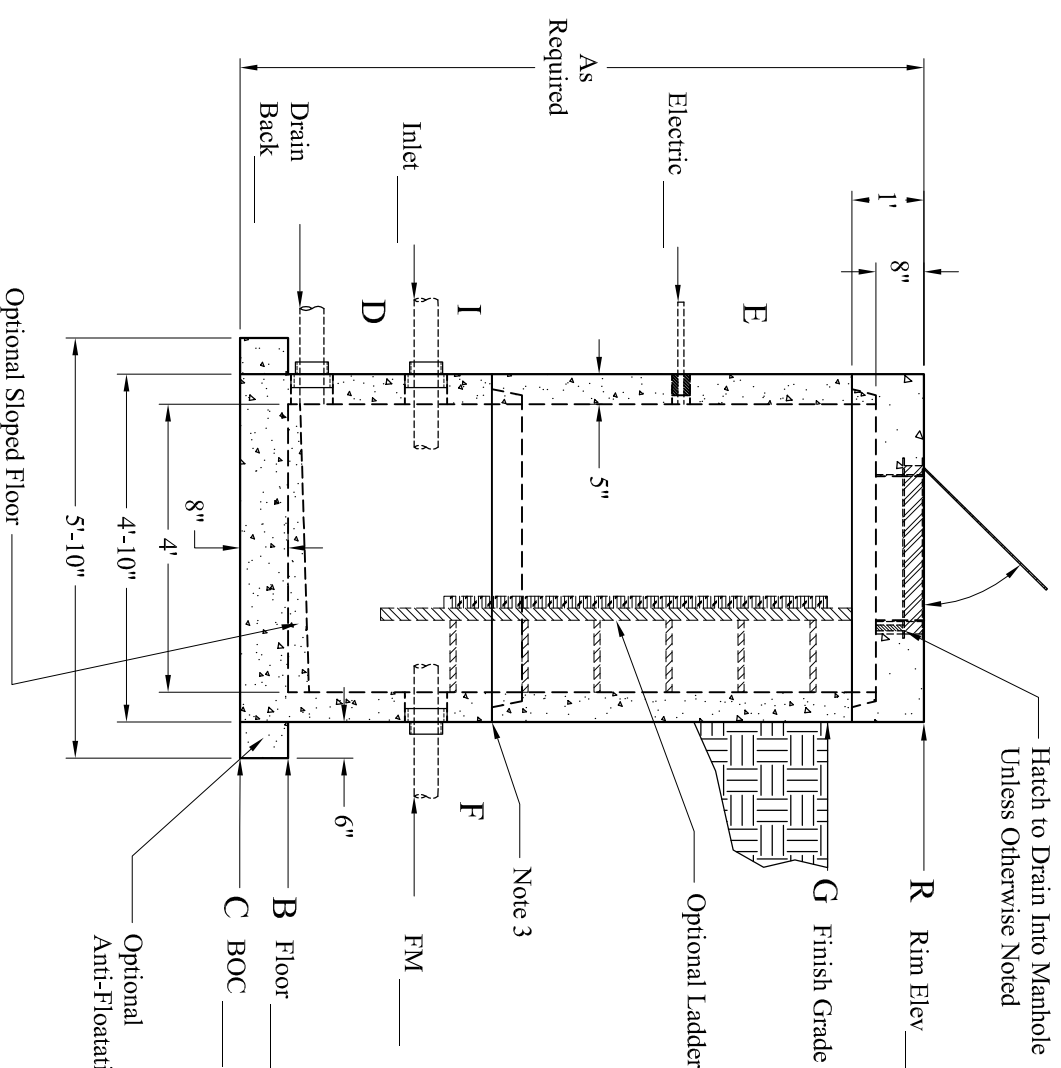


Pipe Chart		
Pipe	Pipe OD	Connection
E		
I		
F		
D		
B		

Elevation Chart	
Description	Elevation
R	Rim
G	Finish Grade
E	Electric Connection(s)
I	Inlet
F	Force Main Outlet
D	Drain Back To Wet Well
B	Inside Bottom Floor
C	Outside Bottom of Concrete

- 1.) Steel Reinforcement Conforms To Latest ASTM Specifications:  
 ASTM A-615 Grade 60 Black Deformed Bars  
 ASTM A-185 Welded Wire Fabric
- 2.) Concrete:  $f_c = 5,000$  PSI @ 28 Days Minimum, Type III Cement
- 3.) Butyl Rubber Joint Sealant Conforms to ASTM C-990 and Federal Spec SS-S-210A.
- 4.) Flexible Connection Provided For All Pipe Connections.
- 5.) All Valves, Mounting Hardware, and Related Ancillary Equipment Provided by Others.
- 6.) HS-20 Design Loading Conforms to Latest Specifications ASTM C478; AASHTO M1199 Precast Reinforced Concrete Manhole Sections
- 7.) Hatch to Drain Into Structure Unless Otherwise Noted
- 8.) Contact Phoenix for Hatch Requirements Exceeding these Dimensions

- Options:
- Link Seal Pipe Connections
  - Link Seal Electrical Connections
  - Exterior Damp Proofing/Water Proofing
  - Interior Coatings
  - Interior Fill (Sloped Floor)
  - Exterior Joint Wrap
  - Aluminum Ladder
  - "Ladder-Up" Safety Post
  - Safety Net, Safety Gate
  - Anti-Floataion Collar
- Est Weights:
- Top Slab: 1,970 Lbs
  - Risers: 865 Lbs/VF
  - Sloped Floor: 560 Lbs
  - Ext Base Slab: 2,650 Lbs



Phoenix Precast Products

Phoenix Precast Products

Customer:	Job No.:	Date:	Drawn By:
Location:	Custom No.:	Rev.:	App'd:

<p><b>Phoenix</b> <b>Precast</b> <b>Products</b></p>	<p><b>4' Diameter</b> <b>Valve Vault</b> <b>Extended Base</b></p>
--	---