

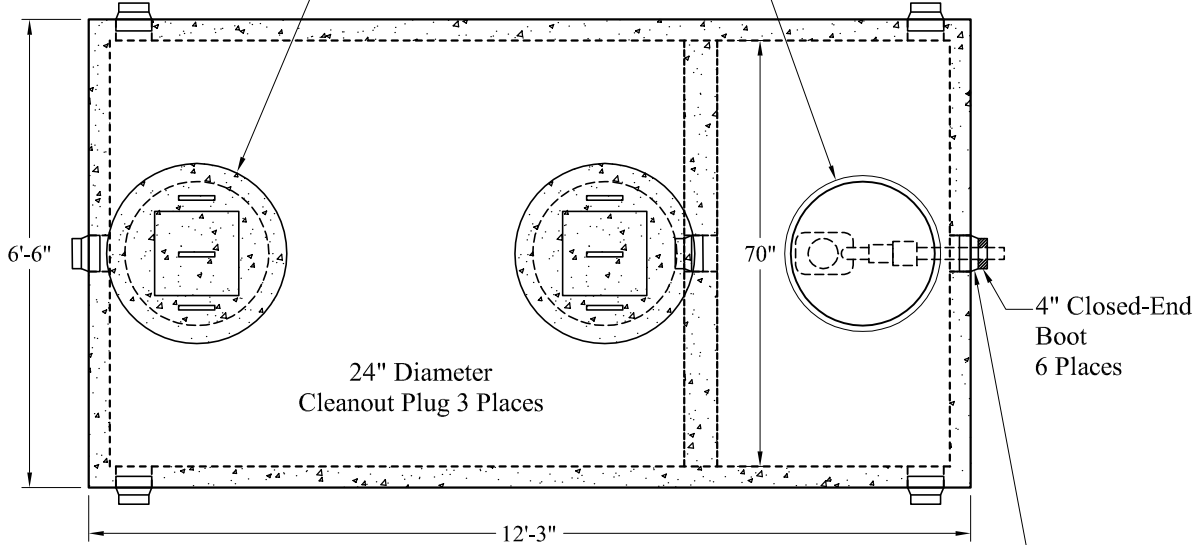
1-800-639-2199

Fax (603) 224-2927

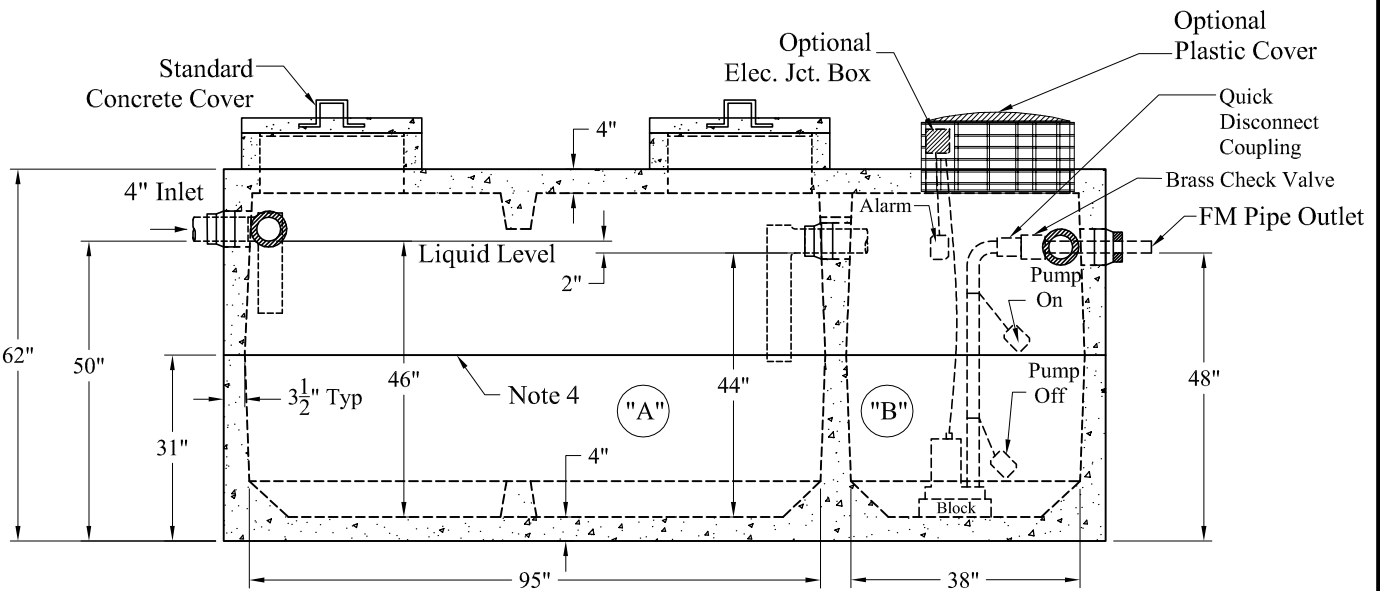
Tanks(Compartment)2 Comp(1750 LD 1250-500
2-Comp Mid-Seam Pump Tank Sales (New Form)

Standard Cover Configuration
Is (3) 24" Dia Concrete Covers

Optional Cover Configuration
Is (3) 24" Dia Plastic Risers
Cast In, With Plastic Covers



NOTE: A Pipe Bushing Will Be Required
On All Boots with Pipes Less Than 4"



Pumps and Related Accessories are Optional.
Junction Box And Electrical Connections
Installed By Others

General Notes

1. Steel Reinforcement Conforms to Latest ASTM Specifications: ASTM-A615 Grade 60 Rebar
2. Concrete: $f_c = 4,000$ psi @ 28 Days Minimum
3. Flexible Sleeves Used On All Pipe Openings
4. Butyl Rubber Joint Sealant Provided
5. Internal PVC Baffles Available
- Inlet: Shall Penetrate at Least 9" Below the Liquid Level, But Not Deeper Than the Outlet Baffle.
- Outlet: Shall Extend Below the Surface of the Liquid Equal to 40% of the Liquid Depth (17").
6. "A" Liquid Level = 345 Gals/VF (29 Gals/In) "A" = 1,266 Gals
"B" Liquid Level = 140 Gals/VF (12 Gals/In) "B" = 501 Gals
Total = 1,767 Gals
7. LD Tanks: 3' Cover Max, Non-Traffic

Est Weight:
Upper: 7,900 Lbs
Lower: 9,360 Lbs
Total: 17,260 Lbs

Elevations:	
Rim:	
Invert In:	
Alarm On:	
Pump On:	
Pump Off:	
Inside Floor:	

**Phoenix
Precast
Products**

**1,250 / 500 Gallon LD
Mid-Seam 2 Compartment
Pump Tank**

P/N:

Phoenix Precast Products

Phoenix Precast Products