

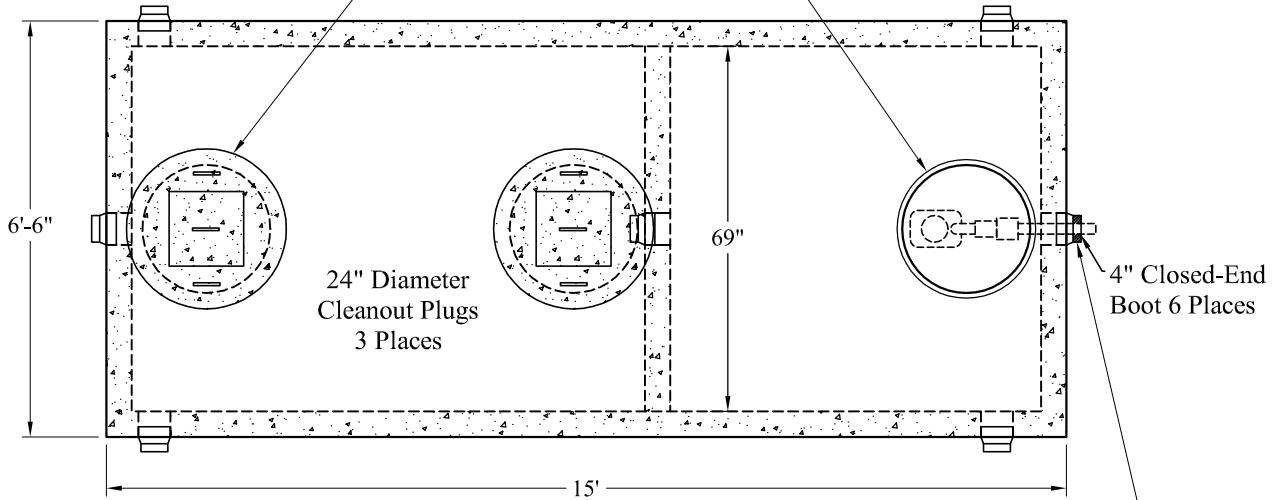
1-800-639-2199

Fax (603) 224-2927

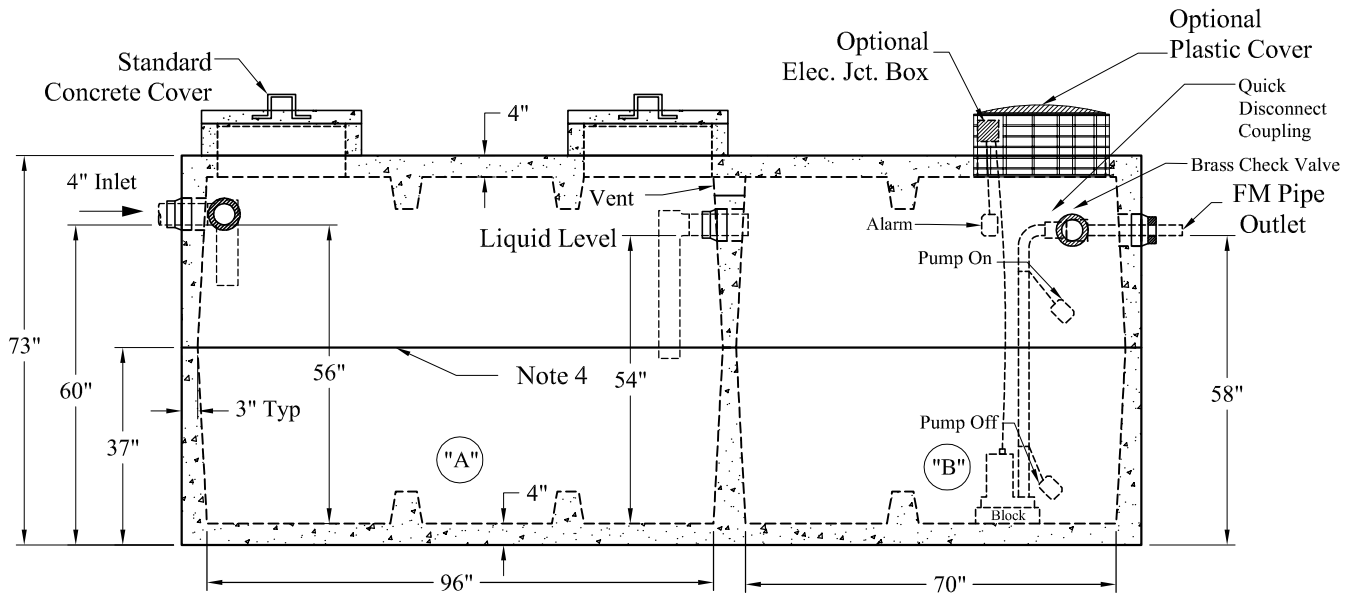
Tanks\Compartment2_Comp\Large LD_2_Comp 1600-1000 Mid-Seam Pump Tank Sales

Standard Cover Configuration
Is (3) 24" Dia Concrete Covers

Optional Cover Configuration
Is (3) 24" Dia Plastic Risers
Cast In, With Plastic Covers



NOTE: A Pipe Bushing Will Be Required
On All Boots with Pipes Less Than 4"



Pumps and Related Accessories are Optional.
Junction Box And Electrical Connections
Installed By Others

General Notes

1. Steel Reinforcement Conforms to Latest ASTM Specifications: ASTM-A615 Grade 60 Rebar
2. Concrete: $f_c = 4,000$ psi @ 28 Days Minimum
3. Flexible Sleeves Used On All Pipe Openings
4. Butyl Rubber Joint Sealant Provided
5. Internal PVC Baffles Available
- Inlet: Shall Penetrate at Least 9" Below the Liquid Level, But Not Deeper Than the Outlet Baffle.
- Outlet: Shall Extend Below the Surface of the Liquid Equal to 40% of the Liquid Depth (21").
6. "A" Liquid Level = 355 Gals/VF (30 Gals/In) "A" = 1,598 Gals
"B" Liquid Level = 262 Gals/VF (22 Gals/In) "B" = 1,158 Gals
Total = 2,756 Gals
7. LD Tanks: 3' Cover Max, Non-Traffic

Est Weight:
Top: 11,780 Lbs
Base: 11,790 Lbs
Total: 23,570 Lbs

Elevations:	
Rim:	
Invert In:	
Alarm On:	
Pump On:	
Pump Off:	
Inside Floor:	

Phoenix Precast Products	1,600 / 1000 Gallon LD Mid-Seam 2 Compartment Pump Tank
	P/N:

Phoenix Precast Products

Phoenix Precast Products