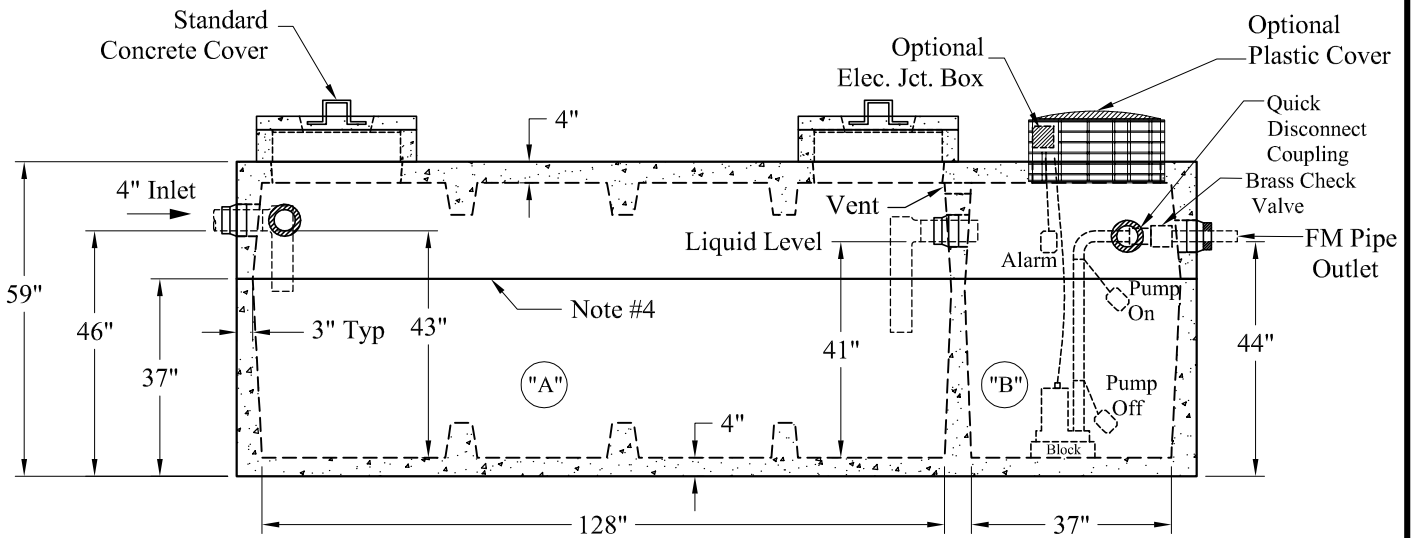
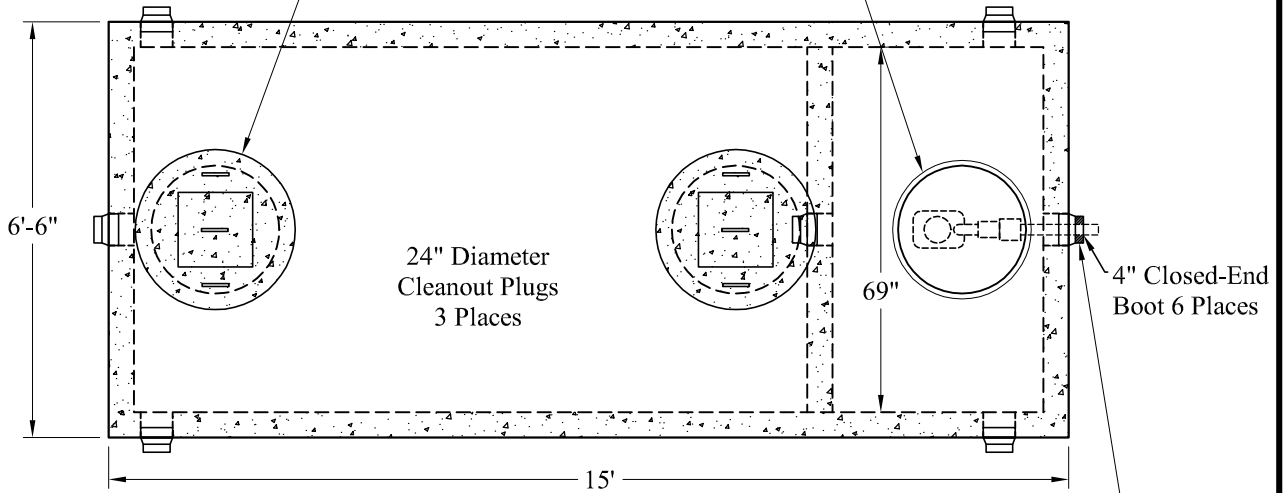


Standard Cover Configuration
Is (3) 24" Dia Concrete Covers

Optional Cover Configuration
Is (3) 24" Dia Plastic Risers
Cast In, With Plastic Covers



Pumps and Related Accessories are Optional.
Junction Box And Electrical Connections
Installed By Others

General Notes

1. Steel Reinforcement Conforms to Latest ASTM Specifications: ASTM-A615 Grade 60 Rebar
2. Concrete: $f_c = 4,000$ psi @ 28 Days Minimum
3. Flexible Sleeves Used On All Pipe Openings
4. Butyl Rubber Joint Sealant Provided
5. Internal PVC Baffles Available
- Inlet: Shall Penetrate at Least 9" Below the Liquid Level, But Not Deeper Than the Outlet Baffle.
- Outlet: Shall Extend Below the Surface of the Liquid Equal to 40% of the Liquid Depth (17").
6. "A" Liquid Level = 473 Gals/VF (39 Gals/In) "A" = 1,618 Gals
"B" Liquid Level = 143 Gals/VF (12 Gals/In) "B" = 475 Gals
Total = 2,093 Gals
7. LD Tanks: 3' Cover Max, Non-Traffic

Est Weight:
Top: 9,440 Lbs
Base: 11,960Lbs
Total: 21,400 Lbs

Elevations:	
Rim:	
Invert In:	
Alarm On:	
Pump On:	
Pump Off:	
Inside Floor:	

**Phoenix
Precast
Products**

1,600 / 450 Gallon
LD Mid-Seam
2 Compartment Pump Tank

P/N: