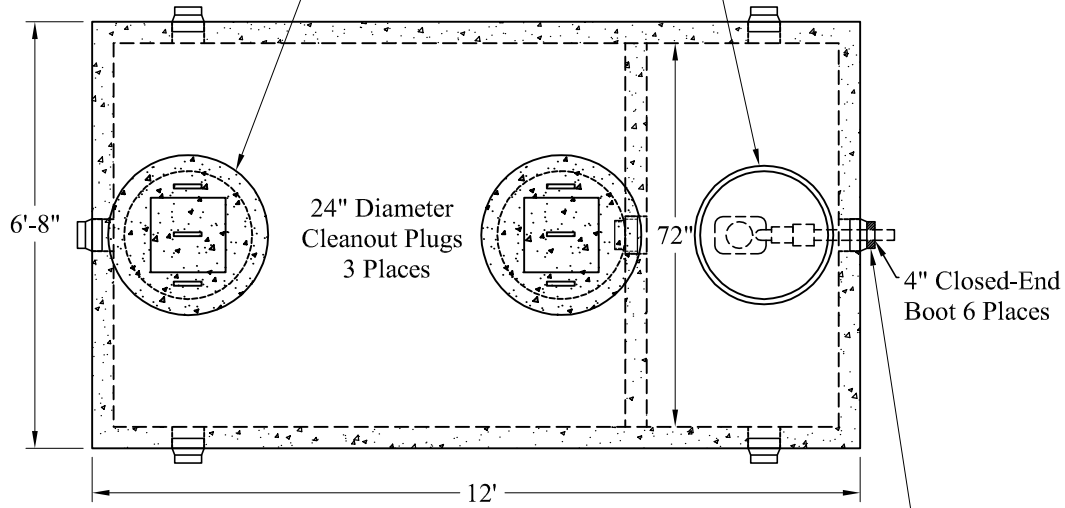
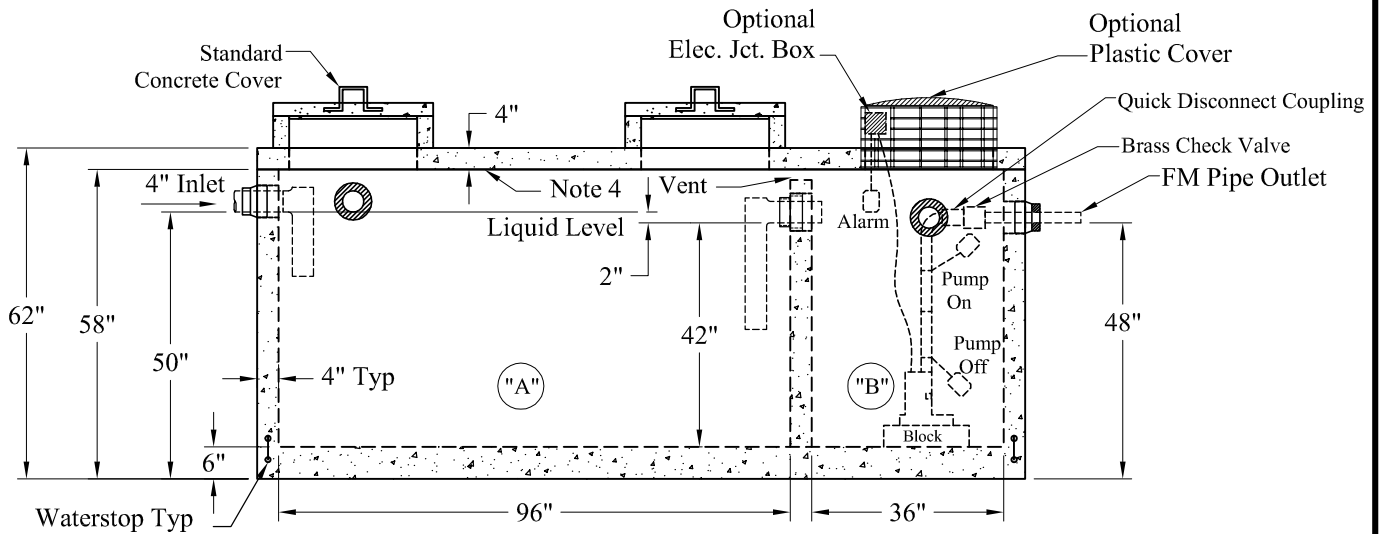


Standard Cover Configuration  
Is (3) 24" Dia Concrete Covers

Optional Cover Configuration  
Is (3) 24" Dia Plastic Risers  
Cast In, With Plastic Covers



NOTE: A Pipe Bushing Will Be Required  
On All Boots With Pipes Less Than 4"



Pumps and Related Accessories are Optional.  
Junction Box And Electrical Connections  
Installed By Others

**General Notes**

1. Steel Reinforcement Conforms to Latest ASTM Specifications: ASTM-A615 Grade 60 Rebar
2. Concrete:  $f_c = 4,000$  psi @ 28 Days Minimum
3. Flexible Sleeves Used On All Pipe Openings
4. Butyl Rubber Joint Sealant Provided
5. Internal PVC Baffles Available
- Inlet: Shall Penetrate at Least 9" Below the Liquid Level, But Not Deeper Than the Outlet Baffle.
- Outlet: Shall Extend Below the Surface of the Liquid Equal to 40% of the Liquid Depth (16")
6. "A" Liquid Level = 360 Gals/VF(30Gals/In) "A" = 1,260 Gals  
"B" Liquid Level = 135 Gals/VF(11Gals/In) "B" = 472 Gals  
Total = 1,732 Gals
7. LD Tanks: 3' Cover Max, Non-Traffic

Est Weights:  
Top Slab: 3,900 Lbs  
Base: 14,900 Lbs  
Total: 18,800 Lbs

<b>Elevations:</b>	
Rim:	
Invert In:	
Alarm On:	
Pump On:	
Pump Off:	
Inside Floor:	

**Phoenix  
Precast  
Products**

**1,250 / 500 Gallon  
LD 2 Compartment  
Top Seam Pump Tank**

P/N: PT-1250/500MLD