

1-800-639-2199

Fax (603) 224-2927

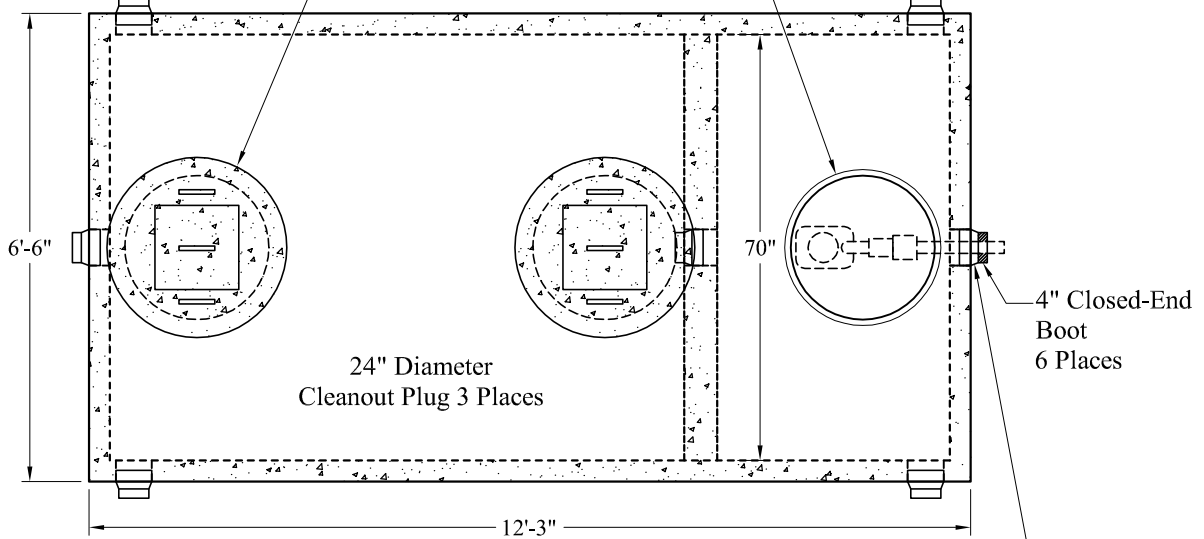
Tanks(Compartment)2 Comp\1750 HD 1250-500  
2-Comp Mid-Seam Pump Tank Sales (New Form)

Phoenix Precast Products

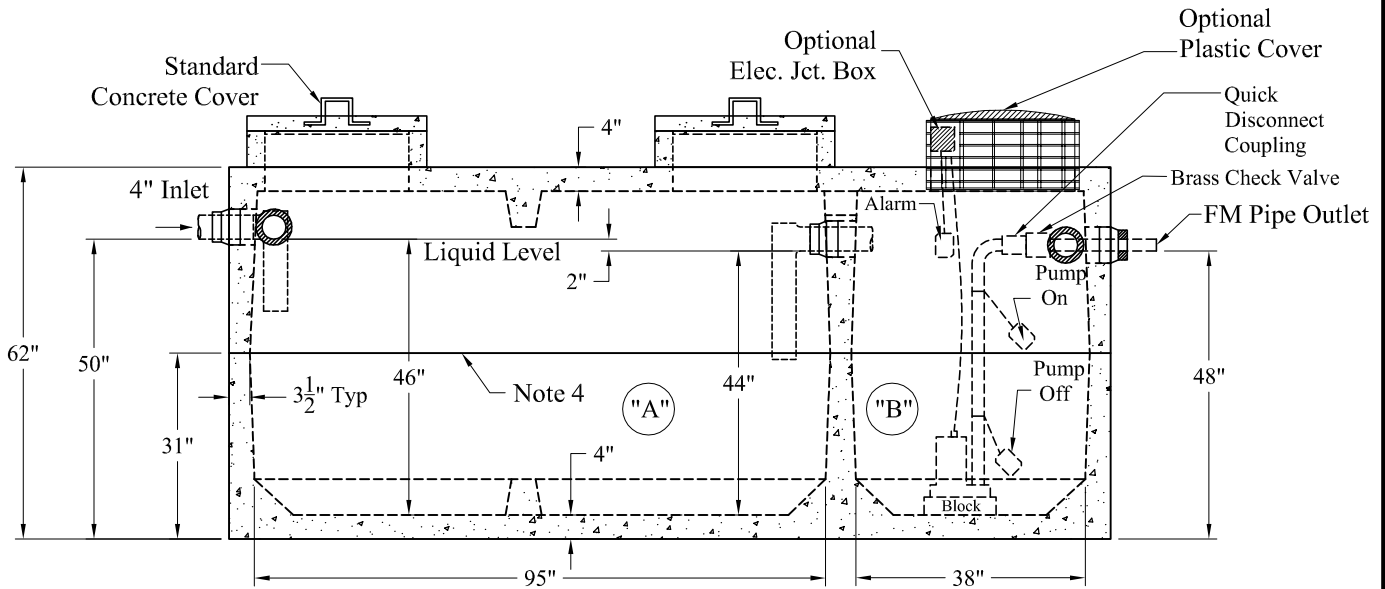
Phoenix Precast Products

Standard Cover Configuration  
Is (3) 24" Dia Concrete Covers

Optional Cover Configuration  
Is (3) 24" Dia Plastic Risers  
Cast In, With Plastic Covers



NOTE: A Pipe Bushing Will Be Required  
On All Boots with Pipes Less Than 4"



Pumps and Related Accessories are Optional.  
Junction Box And Electrical Connections  
Installed By Others

**General Notes**

1. Steel Reinforcement Conforms to Latest ASTM Specifications: ASTM-A615 Grade 60 Rebar
2. Concrete:  $f_c = 4,000$  psi @ 28 Days Minimum
3. Flexible Sleeves Used On All Pipe Openings
4. Butyl Rubber Joint Sealant Provided
5. Internal PVC Baffles Available
- Inlet: Shall Penetrate at Least 9" Below the Liquid Level, But Not Deeper Than the Outlet Baffle.
- Outlet: Shall Extend Below the Surface of the Liquid Equal to 40% of the Liquid Depth (17").
6. "A" Liquid Level = 345 Gals/VF (29 Gals/In) "A" = 1,266 Gals  
"B" Liquid Level = 140 Gals/VF (12 Gals/In) "B" = 501 Gals  
Total = 1,767 Gals
7. HD Tanks: 3' - 6' Cover Max, Non-Traffic

Est Weight:  
Upper: 7,900 Lbs  
Lower: 9,360 Lbs  
Total: 17,260 Lbs

<b>Elevations:</b>	
Rim:	
Invert In:	
Alarm On:	
Pump On:	
Pump Off:	
Inside Floor:	

**Phoenix  
Precast  
Products**

**1,250 / 500 Gallon HD  
Mid-Seam 2 Compartment  
Pump Tank**

P/N: