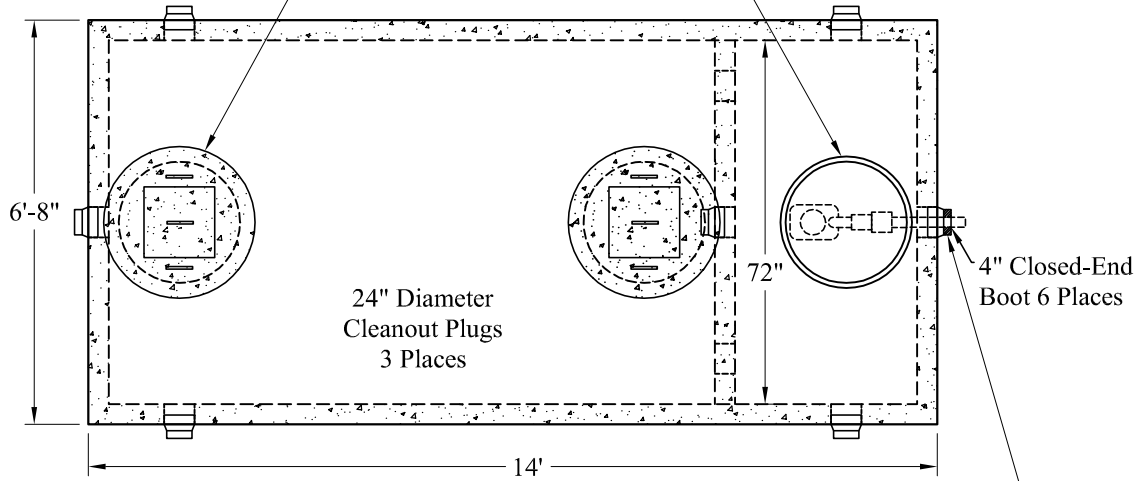
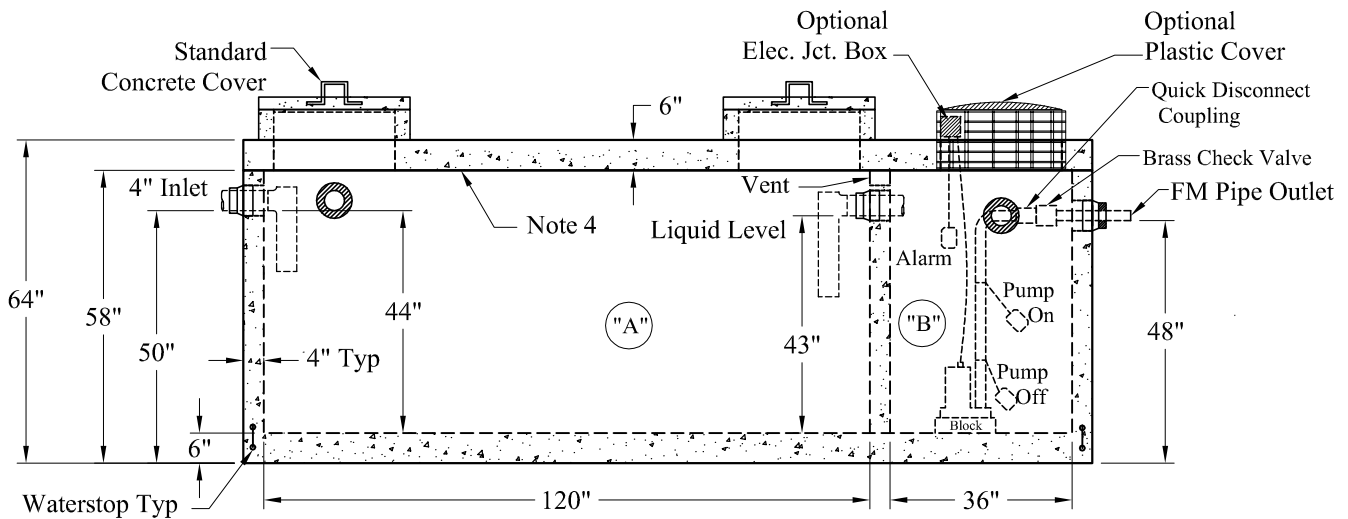


Standard Cover Configuration
Is (3) 24" Dia Concrete Covers

Optional Cover Configuration
Is (3) 24" Dia Plastic Risers
Cast In, With Plastic Covers



NOTE: A Pipe Bushing Will Be Required
On All Boots with Pipes Less Than 4"



Pumps and Related Accessories are Optional.
Junction Box And Electrical Connections
Installed By Others

General Notes

1. Steel Reinforcement Conforms to Latest ASTM Specifications: ASTM-A615 Grade 60 Rebar
2. Concrete: $f_c = 4,000$ psi @ 28 Days Minimum
3. Flexible Sleeves Used On All Pipe Openings
4. Butyl Rubber Joint Sealant Provided
5. Internal PVC Baffles Available
- Inlet: Shall Penetrate at Least 9" Below the Liquid Level, But Not Deeper Than the Outlet Baffle.
- Outlet: Shall Extend Below the Surface of the Liquid Equal to 40% of the Liquid Depth (16").
6. "A" Liquid Level = 450 Gals/VF (38Gals/In) "A" = 1,611 Gals
"B" Liquid Level = 135 Gals/VF (11Gals/In) "B" = 462 Gals
Total = 2,073 Gals
7. HD Tanks: 3' -6' Cover Max, Non-Traffic

Elevations:	
Rim:	
Invert In:	
Alarm On:	
Pump On:	
Pump Off:	
Inside Floor:	

Est. Weights:
Top Slab: 6,220 Lbs
Base: 16,640 Lbs
Total: 22,860 Lbs

**Phoenix
Precast
Products**

**1,600 / 500 Gallon
HD 2 Compartment
Top Seam Pump Tank**

P/N: