

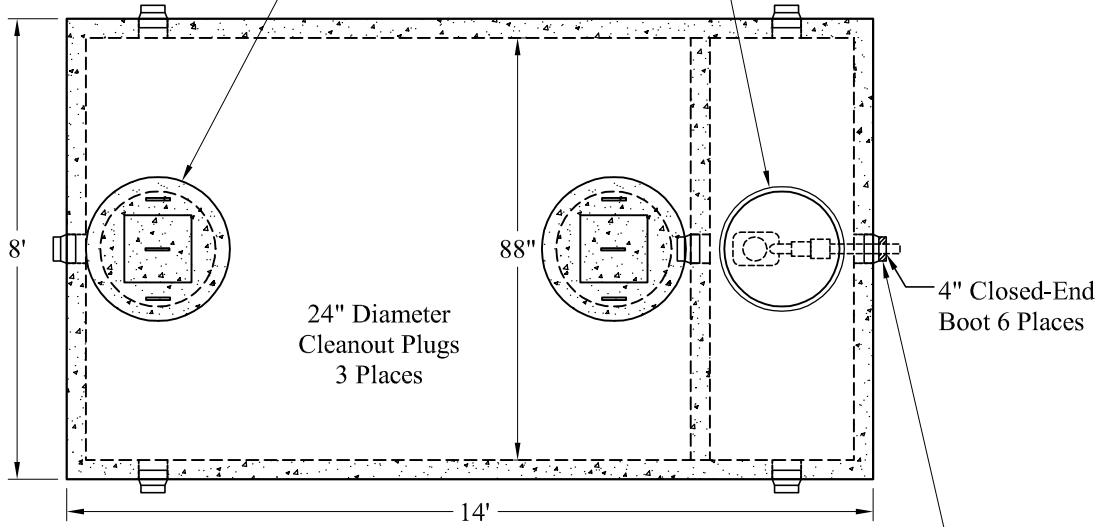
1-800-639-2199

Fax (603) 224-2927

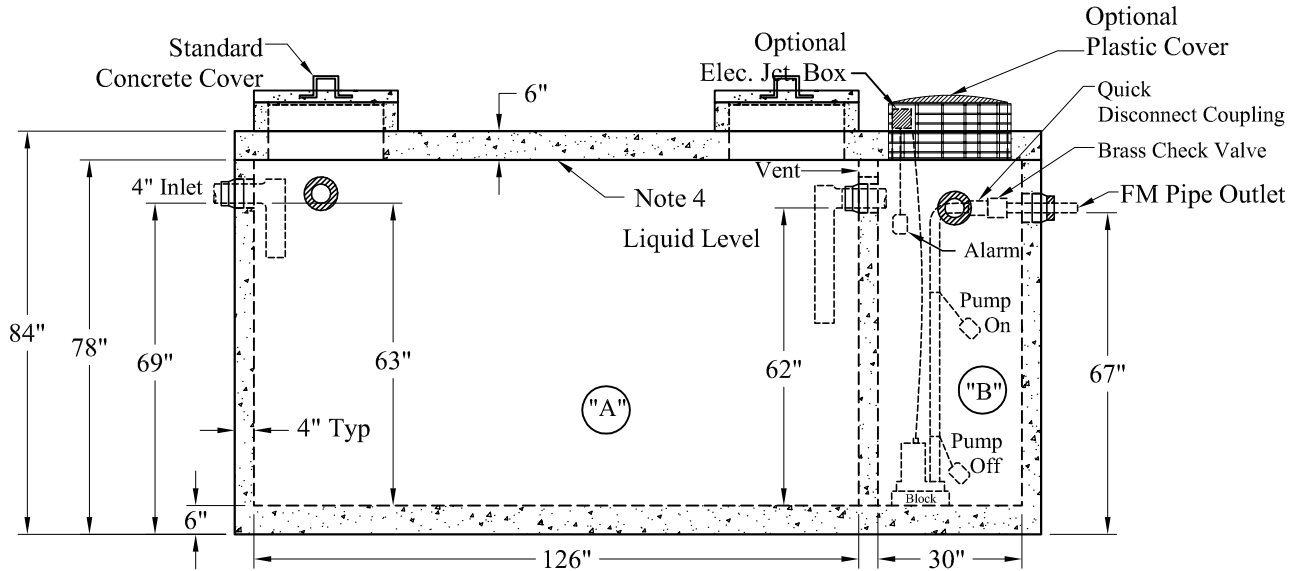
Tanks\Compartment\2_Comp\3000-650_HD 2 Comp Top Seam Pump Tank Sales

Standard Cover Configuration Is (3) 24" Dia Concrete Covers

Optional Cover Configuration Is (3) 24" Dia Plastic Risers Cast In, With Plastic Covers



NOTE: A Pipe Bushing Will Be Required On All Boots with Pipes Less Than 4"



Pumps and Related Accessories are Optional.
Junction Box And Electrical Connections Installed By Others

Elevations:	
Rim:	
Invert In:	
Alarm On:	
Pump On:	
Pump Off:	
Inside Floor:	

General Notes

1. Steel Reinforcement Conforms to Latest ASTM Specifications: ASTM-A615 Grade 60 Rebar
 2. Concrete: $f_c = 4,000$ psi @ 28 Days Minimum
 3. Flexible Sleeves Used On All Pipe Openings
 4. Butyl Rubber Joint Sealant Provided
 5. Internal PVC Baffles Available
- Inlet:** Shall Penetrate at Least 9" Below the Liquid Level, But Not Deeper Than the Outlet Baffle.
Outlet: Shall Extend Below the Surface of the Liquid Equal to 40% of the Liquid Depth (24").
6. "A" Liquid Level = 577 Gals/VF (48 Gals/In) "A" = 2,984 Gals
"B" Liquid Level = 137 Gals/VF (11 Gals/In) "B" = 687 Gals
Total = 3,671 Gals
 7. HD Tanks: 3' -6' Cover Max, Non-Traffic

Est. Weights:
Top Slab: 7,600 Lbs
Base: 23,100 Lbs
Total: 30,700 Lbs

Phoenix
Precast
Products

3,000 / 650 Gallon
HD 2 Compartment
Top Seam Pump Tank

P/N:

Phoenix Precast Products

Phoenix Precast Products