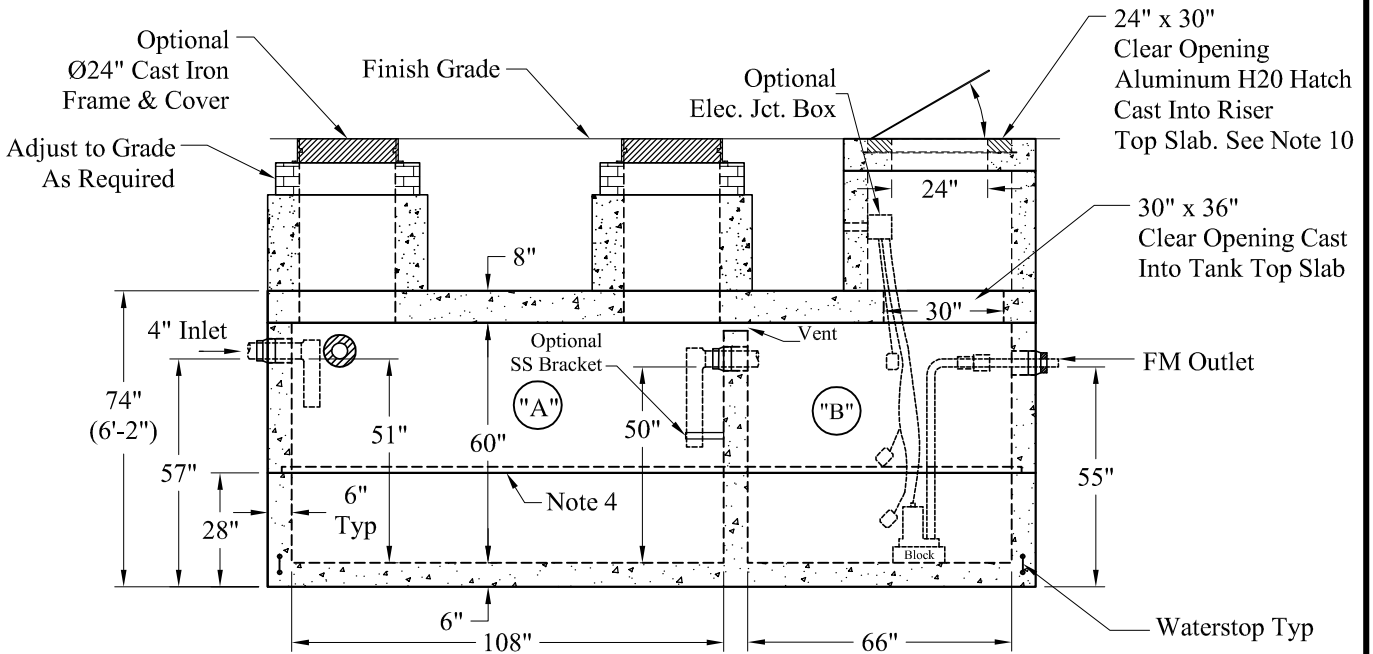


NOTE: A Pipe Bushing Will Be Required on all Boots with Pipes Less Than 4"



General Notes:

- Steel Reinforcement Conforms to Latest ASTM Specifications: ASTM-A615 Grade 60 Rebar
- Concrete: $f_c = 5,000$ psi @ 28 Days Minimum
- Flexible Sleeves Provided On All Pipe Connections
- Butyl Rubber Joint Sealant Provided
- Internal PVC Baffles Available Upon Request
Inlet: Shall Penetrate at Least 9" Below the Liquid Level, But Not Deeper Than the Outlet Baffle.
Outlet: Shall Extend Below the Surface of the Liquid Equal to 40% of the Liquid Depth. (20")
- Design Loading: AASHTO-HS20-44, ASTM C-890-06
- Design Specified As: ASTM C-1227-08, ASTM C-913-08
- Other Inlet/Outlet Pipe Sizes Available
- "A" Liquid Levels: = 405 Gals/VF(34Gals/In)
"B" Liquid Levels: = 247.5 Gals/VF(21Gals/In)
4": "A" = 1,688 Gallons 6": "A" = 1,652 Gallons
"B" = 990 Gallons "B" = 970 Gallons
- Larger Hatch Sizes Are Available

Pumps and Related Accessories are Optional. Junction Box And Electrical Connections Installed By Others

Est Weights:
Top Slab - 10,200 Lbs
Riser - 11,200 Lbs
Base - 15,800 Lbs
Total: 37,200 Lbs

Elevations:	
Rim:	
Invert In:	
Alarm On:	
Pump On:	
Pump Off:	
Inside Floor:	

**Phoenix
Precast
Products**

**1,600 / 1,000 Gallon
2 Compartment HS-20
Duplex Pump Tank**