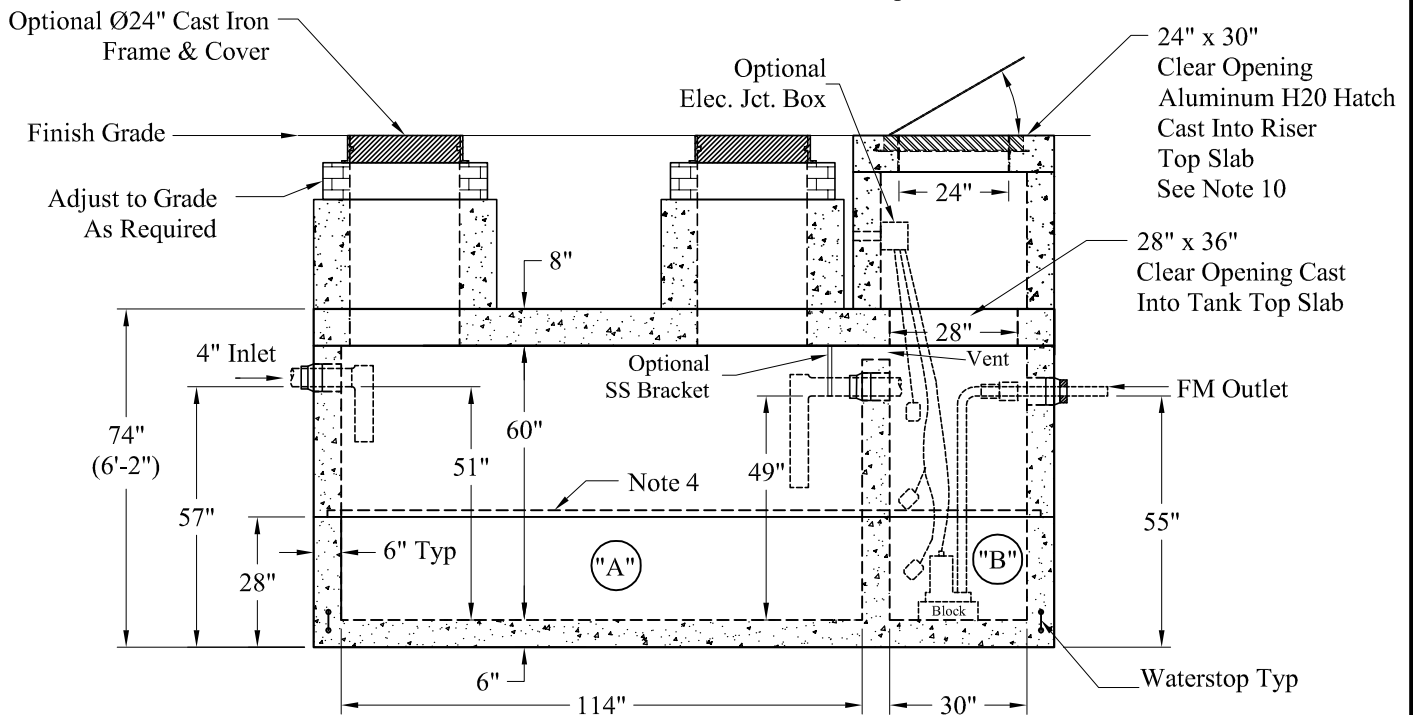


NOTE: A Pipe Bushing Will Be Required on all Boots with Pipes Less Than 4"



General Notes:

1. Steel Reinforcement Conforms to Latest ASTM Specifications: ASTM-A615 Grade 60 Rebar
2. Concrete: $f_c = 5,000$ psi @ 28 Days Minimum
3. Flexible Sleeves Provided On All Pipe Connections
4. Butyl Rubber Joint Sealant Provided
5. Internal PVC Baffles Available Upon Request
Inlet: Shall Penetrate at Least 9" Below the Liquid Level, But Not Deeper Than the Outlet Baffle.
Outlet: Shall Extend Below the Surface of the Liquid Equal to 40% of the Liquid Depth. (20")
6. Design Loading: AASHTO-HS20-44, ASTM C-890-06
7. Design Specified As: ASTM C-1227-08, ASTM C-913-08
8. Other Inlet/Outlet Pipe Sizes Available
9. "A" Liquid Levels: = 428 Gals/VF (36 Gals/In)
 "B" Liquid Levels: = 113 Gals/VF (9 Gals/In)
 4": "A"= 1,746 Gallons 6": "A"= 1,712 Gallons
 "B" = 452 Gallons "B" = 443 Gallons
10. Larger Hatch Sizes Are Available

Pumps and Related Accessories are Optional. Junction Box And Electrical Connections Installed By Others

Est Weights:
 Top Slab - 8,440 Lbs
 Riser - 10,000 Lbs
 Base - 13,660 Lbs
 Total: 32,100 Lbs

| Elevations: | |
|---------------|--|
| Rim: | |
| Invert In: | |
| Alarm On: | |
| Pump On: | |
| Pump Off: | |
| Inside Floor: | |

**Phoenix
 Precast
 Products**

**1,750 / 450 Gallon
 2 Compartment HS-20
 Duplex Pump Tank**