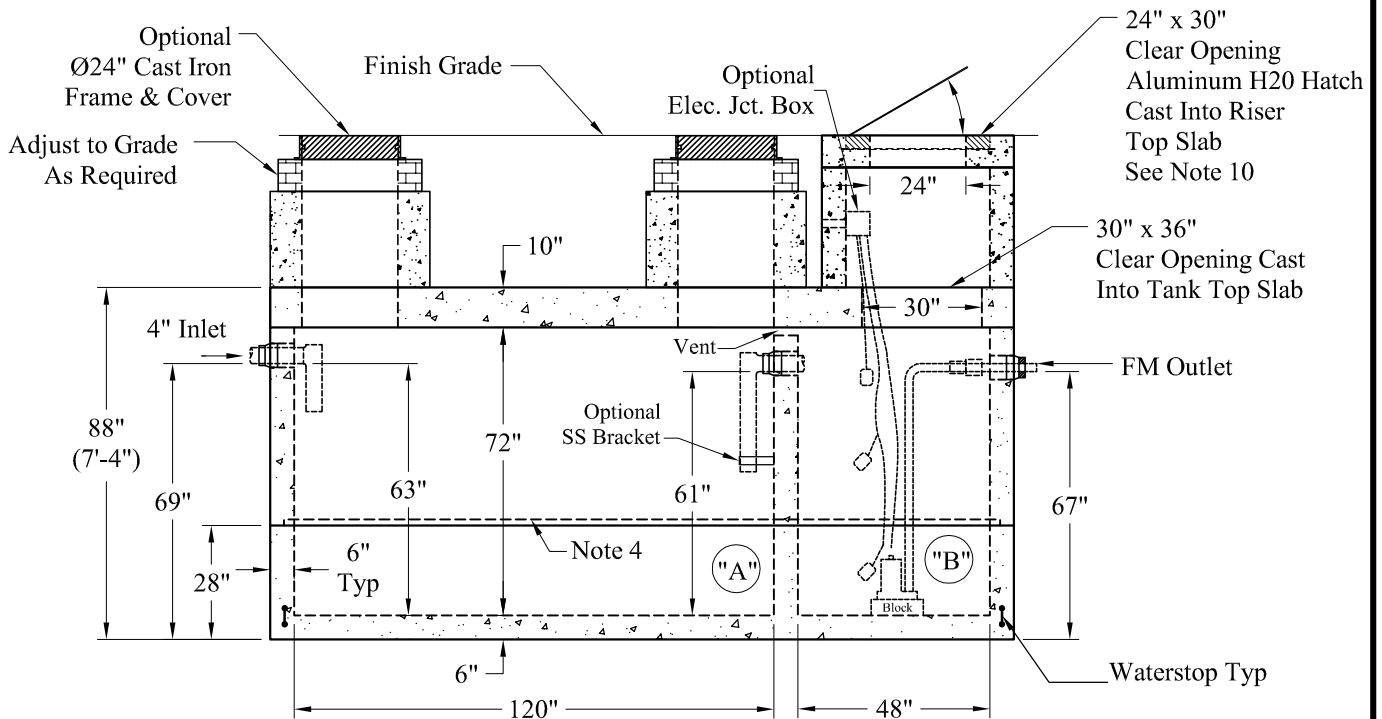


NOTE: A Pipe Bushing Will Be Required on all Boots with Pipes Less Than 4"



General Notes:

1. Steel Reinforcement Conforms to Latest ASTM Specifications: ASTM-A615 Grade 60 Rebar
2. Concrete: $f_c = 5,000$ psi @ 28 Days Minimum
3. Flexible Sleeves Provided On All Pipe Connections
4. Butyl Rubber Joint Sealant Provided
5. Internal PVC Baffles Available Upon Request
Inlet: Shall Penetrate at Least 9" Below the Liquid Level, But Not Deeper Than the Outlet Baffle.
Outlet: Shall Extend Below the Surface of the Liquid Equal to 40% of the Liquid Depth. (25")
6. Design Loading: AASHTO-HS20-44, ASTM C-890-06
7. Design Specified As: ASTM C-1227-08, ASTM C-913-08
8. Other Inlet/Outlet Pipe Sizes Available
9. "A" Liquid Levels: = 525 Gals/VF (44 Gals/In)
 "B" Liquid Levels: = 210 Gals/VF (18 Gals/In)
 4": "A" = 2,667 Gallons 6": "A" = 2,625 Gallons
 "B" = 1,050 Gallons "B" = 1,033 Gallons
10. Larger Hatch Sizes Are Available

Pumps and Related Accessories are Optional. Junction Box And Electrical Connections Installed By Others

Weights:

Top Slab - 15,300 Lbs
 Riser - 15,400 Lbs
 Base - 16,900 Lbs
 Total Weight: 47,600 Lbs

Elevations:	
Rim:	
Invert In:	
Alarm On:	
Pump On:	
Pump Off:	
Inside Floor:	

**Phoenix
 Precast
 Products**

**2,500 / 1,000 Gallon
 2 Compartment HS-20
 Duplex Pump Tank**