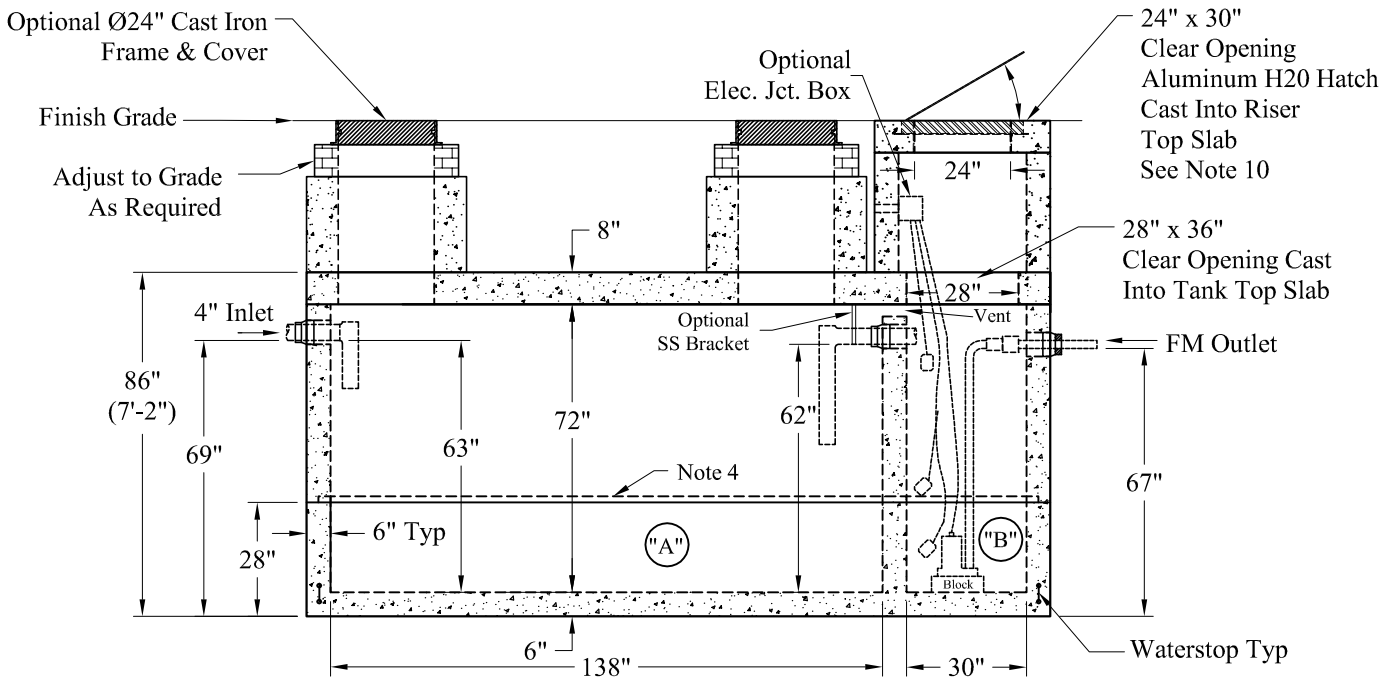


**NOTE:** A Pipe Bushing Will Be Required on all Boots with Pipes Less Than 4"



**General Notes:**

1. Steel Reinforcement Conforms to Latest ASTM Specifications: ASTM-A615 Grade 60 Rebar
2. Concrete:  $f_c = 5,000$  psi @ 28 Days Minimum
3. Flexible Sleeves Provided On All Pipe Connections
4. Butyl Rubber Joint Sealant Provided
5. Internal PVC Baffles Available Upon Request  
Inlet: Shall Penetrate at Least 9" Below the Liquid Level, But Not Deeper Than the Outlet Baffle.  
Outlet: Shall Extend Below the Surface of the Liquid Equal to 40% of the Liquid Depth. (25")
6. Design Loading: AASHTO-HS20-44, ASTM C-890-06
7. Design Specified As: ASTM C-1227-08, ASTM C-913-08
8. Other Inlet/Outlet Pipe Sizes Available
9. "A" Liquid Levels: = 517 Gals/VF (43 Gals/In)  
 "B" Liquid Levels: = 113 Gals/VF (9 Gals/In)  
 4": "A" = 2673 Gallons    6": "A" = 2626 Gallons  
 "B" = 565 Gallons        "B" = 556 Gallons
10. Larger Hatch Sizes Are Available

Pumps and Related Accessories are Optional. Junction Box And Electrical Connections Installed By Others

**Est Weights:**

Top Slab - 9,850 Lbs  
 Riser - 14,560 Lbs  
 Base - 15,320 Lbs  
**Total: 39,730 Lbs**

<b>Elevations:</b>	
Rim:	
Invert In:	
Alarm On:	
Pump On:	
Pump Off:	
Inside Floor:	

**Phoenix  
 Precast  
 Products**      **2,650 / 500 Gallon  
 2 Compartment HS-20  
 Duplex Pump Tank**