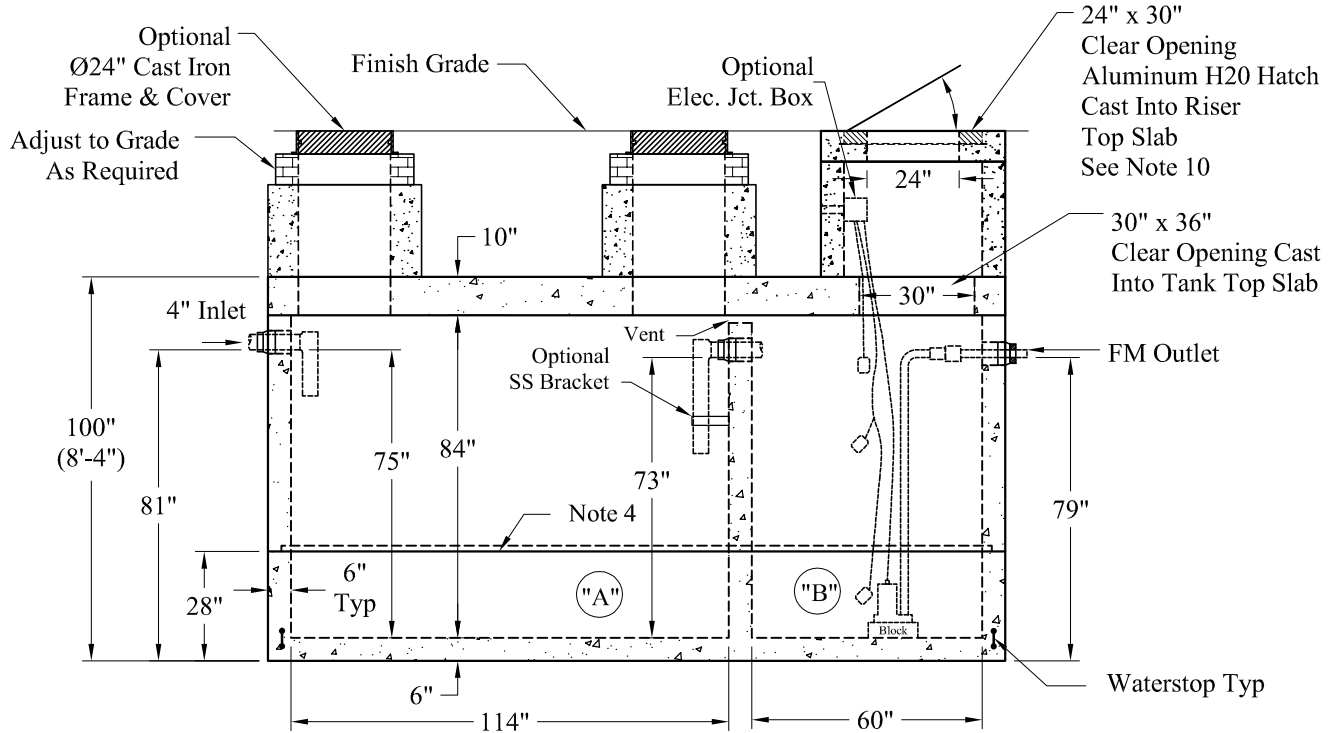


NOTE: A Pipe Bushing Will Be Required on all Boots with Pipes Less Than 4"



General Notes:

1. Steel Reinforcement Conforms to Latest ASTM Specifications: ASTM-A615 Grade 60 Rebar
2. Concrete: fc = 5,000 psi @ 28 Days Minimum
3. Flexible Sleeves Provided On All Pipe Connections
4. Butyl Rubber Joint Sealant Provided
5. Internal PVC Baffles Available Upon Request
- Inlet: Shall Penetrate at Least 9" Below the Liquid Level, But Not Deeper Than the Outlet Baffle.
- Outlet: Shall Extend Below the Surface of the Liquid Equal to 40% of the Liquid Depth. (29")
6. Design Loading: AASHTO-HS20-44, ASTM C-890-06
7. Design Specified As: ASTM C-1227-08, ASTM C-913-08
8. Other Inlet/Outlet Pipe Sizes Available
9. "A" Liquid Levels: = 499 Gals/VF (42 Gals/In)
 "B" Liquid Levels: = 263 Gals/VF (22 Gals/In)
 4": "A" = 3,054 Gallons 6": "A" = 2,994 Gallons
 "B" = 1,578 Gallons "B" = 1,557 Gallons
10. Larger Hatch Sizes Are Available

Pumps and Related Accessories are Optional. Junction Box And Electrical Connections Installed By Others

Weights:

Top Slab -	15,050 Lbs
Riser -	19,650 Lbs
Base -	17,300 Lbs
Total Weight:	52,000 Lbs

Elevations:	
Rim:	
Invert In:	
Alarm On:	
Pump On:	
Pump Off:	
Inside Floor:	

<p>Phoenix Precast Products</p>	<p>3,000 / 1,500 Gallon 2 Compartment HS-20 Duplex Pump Tank</p>
--	---